

CITY OF GREATER DANDENONG
Electric Line Clearance Management Plan
2024-2025



Version control				
File name & Objective reference	Document date	Comments/amendments	Distributed	Authorised
CGD_ELCMP_2024-25_R2020V1	19.3.2024	Draft	TF	MB
CGD_ELCMP_2023-24_R2020V1.1	19.3.2024	Final	DF	SM

Contents

Contents.....	2
Definitions.....	3
Regulation 9 Preparation and submission of management plan	3
Regulations 9(1–3): Responsible Person and Plan.....	3
Regulations 9(4)(a)–(d): Contact details.....	5
Regulation 9(4)(e): Objectives	6
Regulation 9(4)(f): Map of applicable land.....	7
Regulation 9(4)(g): Hazardous and low bushfire risk areas.....	8
Regulations 9(4)(h)(i)–(iii): Specified areas with indigenous or significant trees	9
Regulation 9(4)(h)(i): Indigenous to Victoria.....	10
Regulation 9(4)(h)(ii): Listed in a planning scheme to be of ecological, historical, or aesthetic significance	10
Regulation 9(4)(h)(iii): A tree of cultural or environmental significance	10
Regulation 9(4)(i): Means used to identify indigenous or significant trees.....	10
Regulation 9(4)(j) Management procedures to ensure compliance with the Code.....	11
Regulation 9(4)(j)(i): Methods for managing trees and maintaining minimum clearance.....	11
Regulation 9(4)(k): Procedures when impracticable to comply with AS 4373	18
Regulation 9(4)(l): Alternative compliance mechanisms	19
Regulations 9(4)(m)(i)–(ii): Approval for alternative compliance mechanism	19
Regulation 9(4)(n): Performance assessment measures	19
Regulation 9(4)(o): Audit processes to determine compliance	20
Regulation 9(4)(p): Qualifications and experience	20
Regulation 9(4)(q): Notification and consultation procedures	21
Regulation 9(4)(r): Independent dispute resolution procedure	21
Regulation 9(4)(s) Exemptions and exceptions	22
Regulations 10(1)–(6): Obligations relating to this Plan.....	23
Regulations 10(1)–(4): Requests from Energy Safe Victoria	23
Regulation 10(5): Plan compliance	23
Regulation 10(6): Plan publication	23
Schedule 1 – Code of Practice for Electric Line Clearance.....	23
Part 2—Clearance responsibilities.....	23
Clauses 4–7: Exceptions to minimum clearance space	23
Clause 9: Responsible person may cut or remove hazard tree	25
Division 2—Manner of cutting and removing trees.....	25
Clause 11: Cutting or removal of indigenous or significant trees must be minimised	25
(3)(a) Native trees.....	25
(3)(b) Trees listed in a planning scheme to be of ecological, historical or aesthetic significance	25
(3)(c) Trees of cultural or environmental significance.....	26
Clause 12: Cutting or removing habitat for threatened fauna.....	26
Division 3—Notification, consultation and dispute resolution	26
Clause 17: Responsible person must publish notice before cutting or removing certain trees	26

Division 4—Additional duties of responsible persons Clause 20: Duty relating to the safety of cutting or removal of trees close to an electric line.....27

Clause 21: Duty relating to assisting to determine the allowance for conductor sag and sway27

Appendix 1: Indigenous Species List.....28

Appendix 2: Part 3—Minimum Clearance Spaces.....29

Division 1—Standard minimum clearance spaces29

Appendix 3: Training requirements pertinent to job role31

Appendix 4: Tree species suitable for planting near electric lines33

Appendix 5: Applicable distance for middle two thirds of a span of an electric line – LBRA34

Appendix 6: Applicable distance for middle two thirds of a span of an electric line – HBRA36

Definitions

Abbreviation	Explanation
Act	<i>Electricity Safety Act 1998</i>
CFA	Country Fire Authority
Code	Code of Practice for Electric Line Clearance as defined in the Schedule of the Electricity Safety (Electric Line Clearance) Regulations 2020
Conductor	Overhead powerline
Council	The City of Greater Dandenong
Declared area	The area of the municipality where vegetation management around powerlines is the responsibility of City of Greater Dandenong
DEECA	Department of Energy, Environment and Climate Action
ESV	Energy Safe Victoria
HV	High voltage (22,000volts – 66,000 volts)
LBRA	Low Bushfire Risk Area - An area that a fire control authority has assigned a fire hazard rating of “low” under section 80 of the Act; or an urban area
HBRA	Hazardous Bushfire Risk Area - An area that a fire control authority has assigned a fire hazard rating of “high” under section 80 of the Act
LV	Low voltage (240volts)
Plan	City of Greater Dandenong Electric Line Clearance Management Plan
Regulations	Electricity Safety (Electric Line Clearance) Regulations 2020
Suitably qualified arborist	An arborist who holds a minimum, a Certificate III in Arboriculture including the ‘Perform a ground-based tree defect evaluation’ unit or equivalent, and at least three years of experience in assessing trees

Regulation 9 Preparation and submission of management plan

Regulations 9(1–3): Responsible Person and Plan

Under obligations as a ‘responsible person’ under the Victorian *Electricity Safety Act 1998*, the City of Greater Dandenong (Council) has prepared this Electric Line Clearance Management Plan (the Plan) in compliance and accordance with the Energy Safe Victoria (ESV) *Electricity Safety (Electric Line*

Clearance) Regulations 2020 – [Regulation 9 Preparation and submission of management plans](#). Obligations under Regulations 10(1)–(6) are also addressed in the Plan.

The City of Greater Dandenong, Manager Infrastructure Services and Senior Arborist or delegated authority reviews and amends this Plan annually.

Specifically, the annual review will review the following information as a minimum:

Section	Annually	Notes and references
9(1–3)	All references to the Act, Regulations, and Code are relevant and up to date	Check the date applicable to the Plan. Put most recent Plan on Council’s website
9(4)(a)–(d)	Ensure management details are up to date	Internal records and staff changes
9(4)(f)	Check for updates to declared areas and zoning for general tree maintenance	Any changes of additions to the annual tree maintenance cycle
9(4)(g)	Check for updates to the LBRA & HBRA zones	https://discover.data.vic.gov.au/dataset/low-bushfire-rating-areas1
9(4)(g)	Request updated GIS layers from Distribution Businesses for the distribution network	Refer to the contact details in section Regulations 9(4)(j)(ii)(B)
9(4)(h)(i)	Check the threatened species list	https://www.environment.vic.gov.au/conserving-threatened-species/threatened-list
9(4)(h)(ii)	Check for updates to the Environment and Landscape Planning Overlays and add to the tree database (ESO, SLO, & VPO)	https://mapshare.vic.gov.au/Vicplan/index.html?RunWorkflow=LgaSelect&lga=Greater%20Dandenong
9(4)(h)(ii)	Check for updates to the Heritage Overlay schedule and add to the tree database	https://planning-schemes.api.delwp.vic.gov.au/schemes/greaterdandnong/ordinance/43_01s_gdan.pdf
9(4)(h)(iii)	Check for updates to the Significant Tree Register and add updates to the tree database	Significant Tree Register held internally at CGD
9(4)(i)	Check for updates to Indigenous or Significant Trees and add to tree database	https://achris.vic.gov.au/#/dashboard
9(4)(j)(i)	Check that the most recent Regulations are part of the tree maintenance contract	Check that the Tree Maintenance Contract includes allowance for any changes and update Contractors with any changes (e.g. additional block maintenance)
9(4)(j)(i)	Update the tree maintenance schedule for the relevant year	Forward plan the dates for block zone work and input the updated timeframes into the schedule in Table 1 . Check the website has the most recent schedule
9(4)(j)(i)	Request and review the qualifications of contractors	Qualifications need to match description of job role as per Appendix 3
9(4)(j)(ii)(B)	Liaise with the relevant DB to get latest clearance requirements for spans >100m LBRA and >45m HBRA	Refer to the contact details in section Regulations 9(4)(j)(ii)(B)
9(4)(l)	Review any applications for alternative compliance mechanisms	Ensure the tree database is updated with this information
9(4)(p)	Check the latest units of competency for the Certificate II in ESI - Powerline Vegetation Control.	Training.gov: Certificate II in ESI - Powerline Vegetation Control Update the site audit form to reflect the most recent training units
9(4)(s)	Exceptions - review, assess, and update	Include this as an agenda item in monthly tree maintenance contract meetings and update the tree database

The amended document will be submitted to the Chief Engineer Major Projects and Executive Director City Futures for review and authorisation prior to the 31 March this year. The superseded document will be removed from circulation on 30 June of each year and replaced with the new, approved document.

This Plan is applicable for the financial year from 1 July 2024 – 30 June 2025. The Plan is stored in Council’s document management system (Objective) and is available for review on Council’s website at <https://www.greaterdandenong.vic.gov.au/biodiversity-nature-and-wildlife/trees>. City of Greater Dandenong, Senior Arborist will submit to Energy Safe Victoria the Plan within 14 days of a request.

Regulations 9(4)(a)–(d): Contact details

4(a) Responsible Person

Name	Jacqui Weatherill
Position	Chief Executive Officer
Address	City of Greater Dandenong 225 Lonsdale Street Dandenong VIC 3175
Contact	T: 03 8571 5100 E: council@cgd.vic.gov.au

(b) Individual responsible for the preparation of the management plan

Name	Sanjay Manivasagasivam
Position	Executive Director City Futures
Address	City of Greater Dandenong 225 Lonsdale Street Dandenong VIC 3175
Contact	T: 03 8571 1571 E: council@cgd.vic.gov.au

(c) Person/s responsible for carrying out the management plan

Name	David Fice
Position	Chief Engineer Major Projects
Address	City of Greater Dandenong 225 Lonsdale Street Dandenong VIC 3175
Contact	T: 03 8571 5242 E: David.Fice@cgd.vic.gov.au

Name	Matt Berry
Position	Manager Infrastructure Services
Address	City of Greater Dandenong 225 Lonsdale Street Dandenong VIC 3175
Contact	T: 03 8571 1713 E: Matthew.Berry@cgd.vic.gov.au

Name	Tim Ford
Position	Service Unit Leader Parks
Address	City of Greater Dandenong 20 Bennet Street, Dandenong, VIC 3175
Contact	T: 03 95871 1764 E: Tim.Ford@cgd.vic.gov.au

Name	Jack Chittenden
Position	Team Leader Conservation & Horticultural Services
Address	City of Greater Dandenong 20 Bennet Street, Dandenong, VIC 3175
Contact	T: 03 8571 1772 E: Jack.Chittenden@cgd.vic.gov.au

(d) Emergency telephone number for electric line clearance from a Council tree

Telephone	Council Customer Service (operates after hours) 03 8751 5100
------------------	---

Regulation 9(4)(e): Objectives

By complying with the *Electricity Safety (Electric Line Clearance) Regulations 2020* and the Code of Practice, the objectives of the plan are to:

- Protect public safety at all times from the contact between power lines and vegetation in relation to fire risk, human injury and continuity of supply.
- Maintain community satisfaction with the ongoing management of public tree assets.
- To comply with the Regulations and Code, whilst protecting areas of important, indigenous, and significant vegetation throughout Council’s Declared Area.
- Management to maximise environment and amenity.
- Maintaining electrical safety and provide a safe working place for employees and contractors undertaking vegetation clearance pruning and any employee or contractors who conduct other vegetation maintenance works within the vicinity of powerlines.

These objectives will be achieved by:

- Maintaining open dialogue with the vegetation management group of relevant distribution companies and contractors so that all parties have a clear understanding of each other’s priorities.
- Provide notification and education to the public regarding the importance of public tree assets and their management.
- Ongoing improvement of the City of Greater Dandenong electronic tree database and a functional Geographical Information System (GIS) that allows users to efficiently locate tree assets and record information regarding adjacent electric lines and the condition, size, species, structure, and management requirements for tree assets.
- Undertaking pruning work in accordance with industry best practice and taking a careful and considered approach to tree species selection for planting near electrical infrastructure.
- Ensuring employees are appropriately trained and qualified, and are working to industry best practice.
- Ongoing auditing and contract performance monitoring through the use of measurable KPIs and monthly meetings and reporting.

Regulation 9(4)(f): Map of applicable land

The City of Greater Dandenong municipality is in the south-eastern suburbs of metropolitan Melbourne and encompasses approximately 130 square kilometres. The Plan applies to the Declared Areas of municipality – the north of the municipality being designated a Declared Area and the south designated a non-declared area (Figure 1).

The City of Greater Dandenong is divided into fourteen maintenance blocks (Figure 1).

The Declared Area is comprised of 12 of the maintenance blocks (1 – 12). Maintenance blocks 13 and 14 are in the non-declared area and do not form part of Council’s responsibility under the Code.

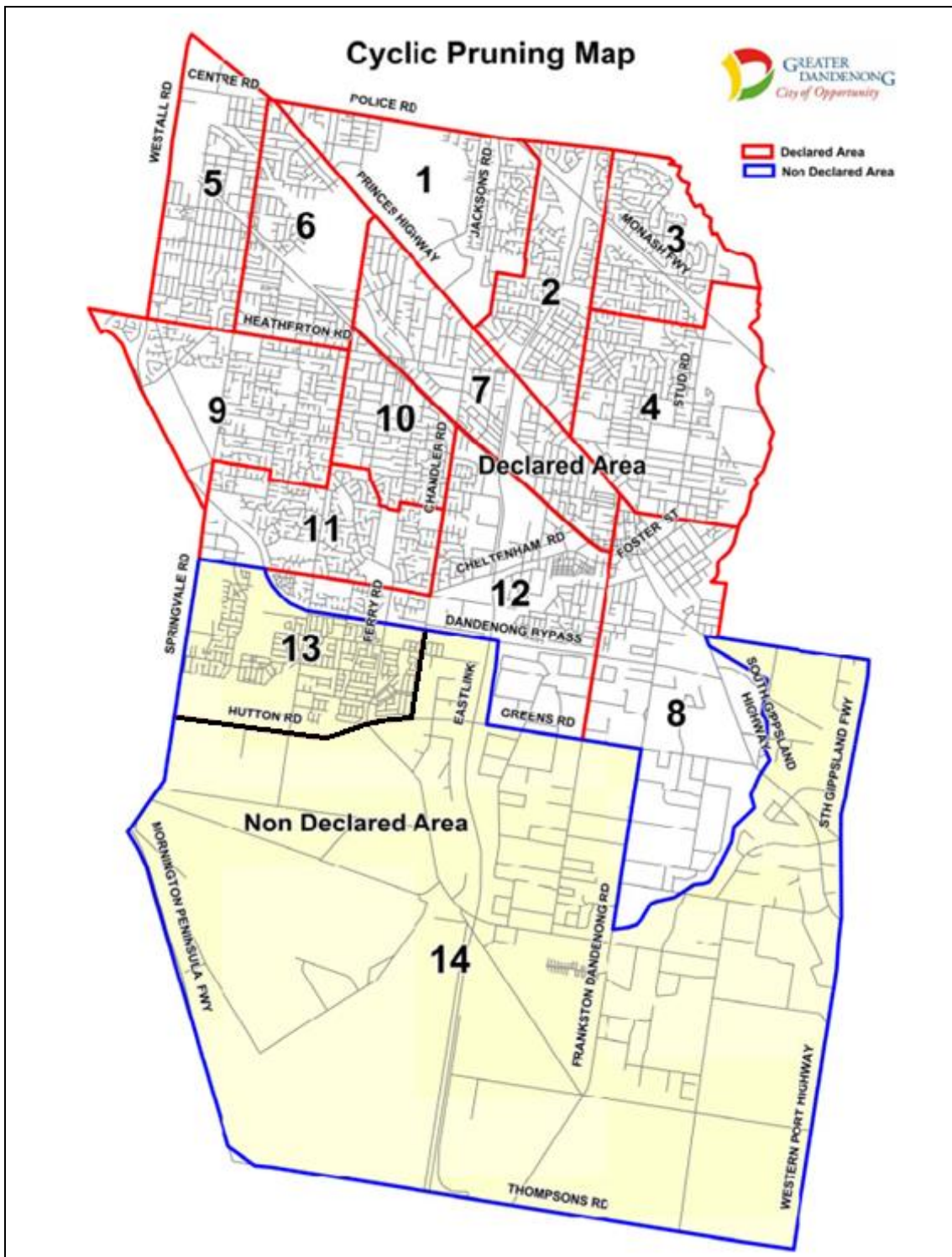


Figure 1. Map of the City of Greater Dandenong municipality showing maintenance blocks (1 – 14) and declared (red outline) and non-declared (blue outline) areas.

Regulation 9(4)(g): Hazardous and low bushfire risk areas

The Country Fire Authority (CFA) fire hazard ratings for electric lines apply to the maintenance blocks as follows:

- The majority of the declared area is low bushfire risk area (LBRA)
- Two small sections in blocks 3 & 4, and 9 are hazardous bushfire risk areas (HBRA).

A coloured map (Figure 2) shows the 2 small sections of HBRA as red in the Declared Area; a small section between Westall and Clarke Roads in the mid-west (1), and a small section east of Stud Road in the north-east (2).

The bushfire risk area boundary information is updated using the Electric Line Vegetation Clearance page on the [CFA's website](#). This process occurs every 12 months with the preparation of the plan.

Every year, Council liaises with the relevant Distribution Businesses ([Regulation 9 \(4\)\(j\)\(ii\)\(B\)](#)) to obtain up-to-date GIS layers for the distribution network. This helps to improve planning and identification of affected trees in the LBRA and HBRA areas.

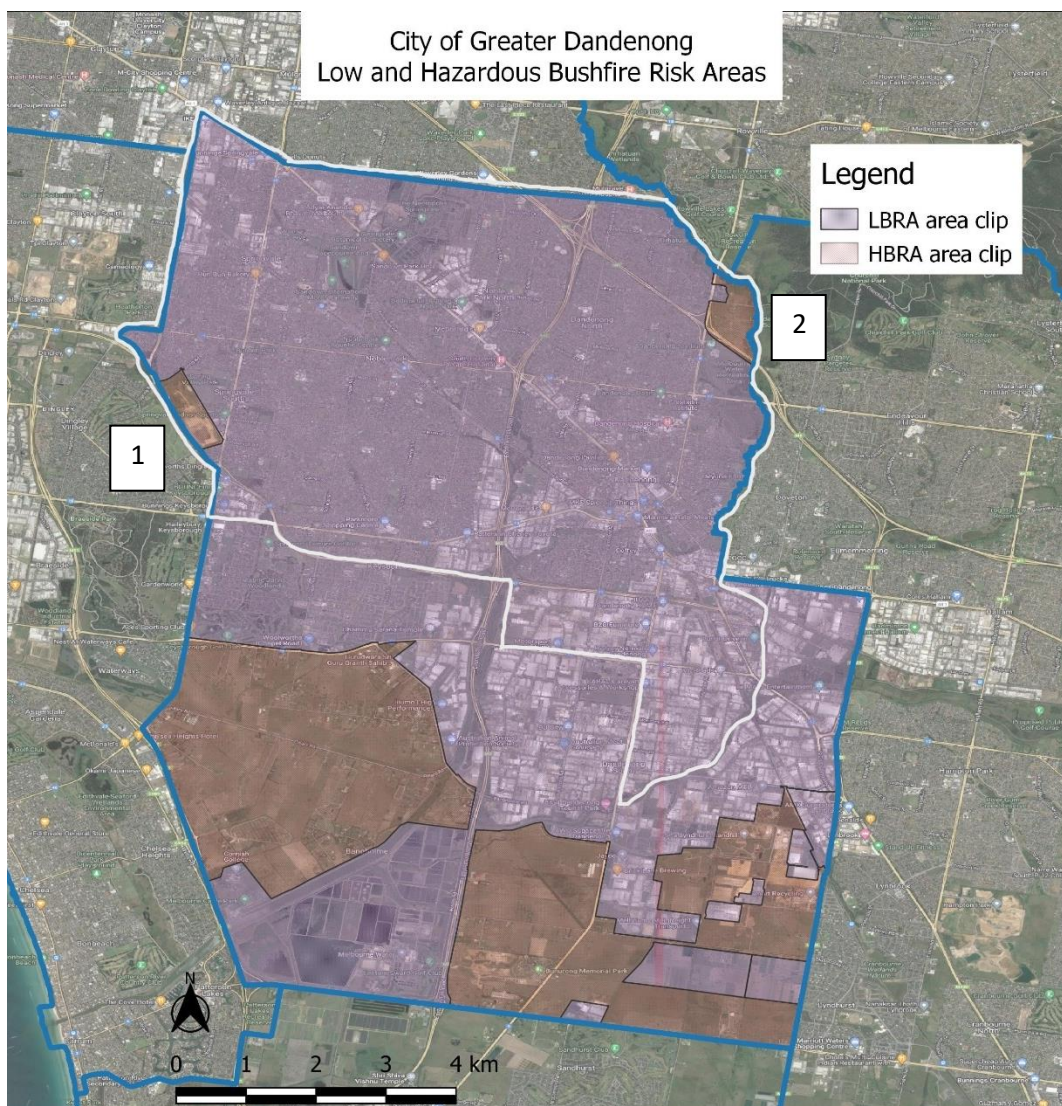


Figure 2. Coloured map of the bushfire risk areas within the City of Greater Dandenong.
The Declared Area is outlined in white.
The Low Bushfire Risk Areas (LBRA) are shown in the purple areas and the
Hazardous Bushfire Risk Areas (HBRA) are shown in the red areas. Areas 1 & 2 are in the Declared Area.

Regulations 9(4)(h)(i)–(iii): Specified areas with indigenous or significant trees

Council’s tree database identifies tree location and records information regarding electric lines, data relating to tree condition, structure, size, significance and management (i.e. last date of inspection or cutting).

Each year, as part of the preparation of the Plan, Council reviews the resources listed below to identify trees indigenous to Victoria or significant trees specified in Regulations 9(4)(h)(i), (ii) and (iii) and updates the tree database accordingly. All trees that are included in the below categories are identifiable in Council’s tree database by the category ‘significant’ and the decision-making process in Figure 3 is applied to these trees.

Work crews access this information in the field on mobile devices before undertaking works on trees managed by the City of Greater Dandenong, enabling awareness of the significance and requirements by both Council and the tree maintenance contractors.

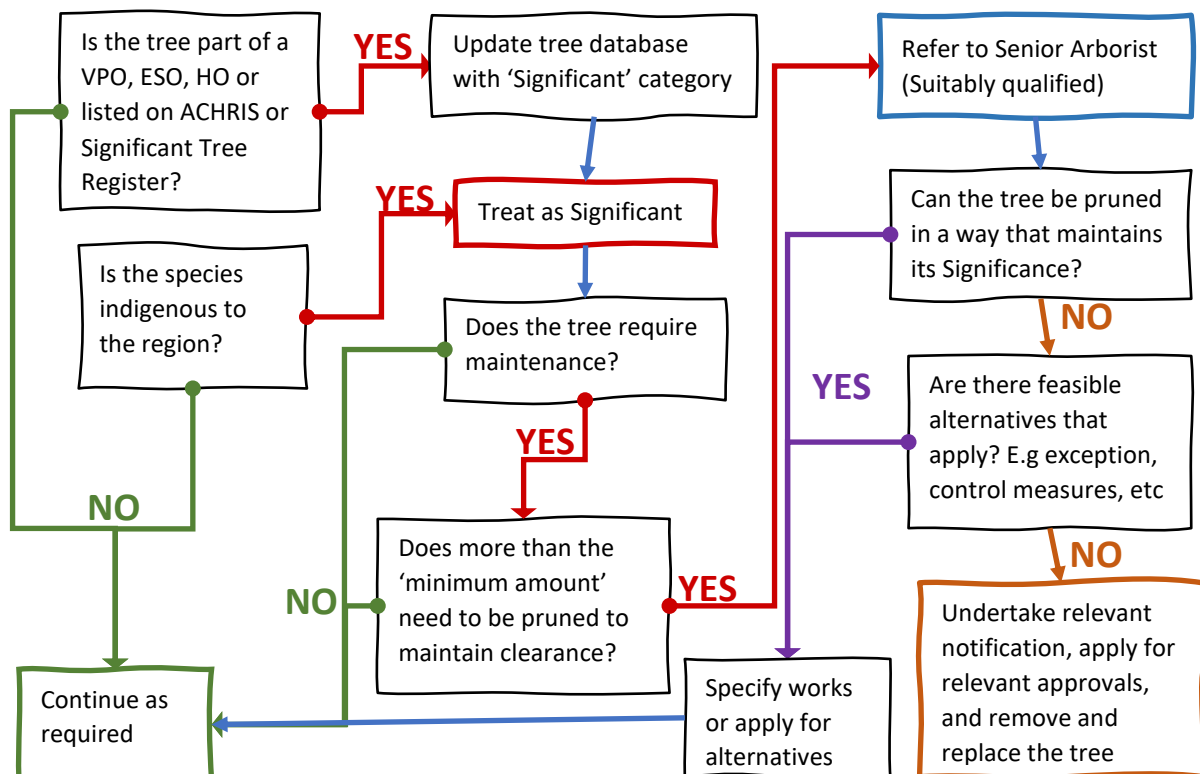
Pursuant to Clauses 11 and 12 of the Code, Council will, as far as practicable:

- Restrict cutting or removal of indigenous or significant trees to the minimum extent necessary to ensure compliance with the requirements of and schedule to the Code, or to make an unsafe situation safe
- Avoid cutting or removing a tree that is habitat for [threatened fauna](#) during the breeding season, unless it is necessary to mitigate a high-risk hazard.

Where it is not practicable to avoid tree pruning or removal during the breeding season, Council will:

- Translocate the breeding threatened fauna before undertaking the tree works.

Figure 3: Decision making process for indigenous and significant trees



Regulation 9(4)(h)(i): Indigenous to Victoria

Indigenous tree species are common and widely planted throughout the streets of the City of Greater Dandenong. Council maintains a tree database that identifies the location and species of each tree. To ensure the trees are identified correctly, the City of Greater Dandenong utilises trained and qualified arborists for inspections who are able to identify these species.

Before pruning in an area, the contractor is required to:

- Have a comprehensive understanding of trees that are indigenous to the region
- Have the ability to identify the tree and cross reference with Council’s tree database to ensure records are accurate

A list of species can be found at Appendix 1: Indigenous Species List

The City of Greater Dandenong will also seek specialist advice (where necessary) to determine if any species (or habitat thereof) or communities on the [Flora and Fauna Guarantee Act Threatened List](#) are endangered by works to prune or remove trees.

Regulation 9(4)(h)(ii): Listed in a planning scheme to be of ecological, historical, or aesthetic significance

Identified areas of historical, cultural, environmental, ecological, and aesthetical importance are covered by Vegetation Protection Overlays (VPO), Environmental Significance Overlays (ESO), and Heritage Overlays (HO) in the Planning Scheme. Information of trees within these overlays includes:

- Tree species (and approximate number of specimens if greater than one)
- Address
- Address of other affected properties.

After each review of the City of Greater Dandenong Planning Scheme, Council reviews the trees that may be affected, and updates the tree database accordingly. Before tree maintenance works in an area, the contractor is required to check Council’s tree database to see if any trees are significant.

The [City of Greater Dandenong Planning Scheme](#) is located on the Planning Vic website and is access and reviewed annually in preparation for the Plan. Currently, there are no ESOs or VPOs relevant to Declared Areas of City of Greater Dandenong, however there are 35 locations within City of Greater Dandenong that are listed in the HO that have applicable tree controls. Six of these locations fall within the Declared Area and trees in these locations have been categorised as ‘significant’ in the tree database (Figure 3). The most up to date Schedule is reviewed from: [Greater Dandenong Planning Scheme – Schedule to Clause 43.01 Heritage Overlay](#).

Regulation 9(4)(h)(iii): A tree of cultural or environmental significance

The City of Greater Dandenong reviews the advice provided by the [Aboriginal Cultural Heritage Register and Information System](#) (ACHRIS) as part of preparation of the Plan.

Information regarding specific trees on the Aboriginal Cultural Heritage Register is not publicly available and a request is made annually via ACHRIS to obtain the most up-to-date information. This information is recorded within the tree database as a ‘significant’ tree and follows the process set out in Figure 3.

Regulation 9(4)(i): Means used to identify indigenous or significant trees

Trees assessed as having cultural or environmental significance at local, state, and national levels are listed in Council’s tree database as ‘significant’. Before pruning in an area, the Contractor must check Council’s tree database to determine if any trees adjacent to the powerlines are listed as significant and follow the decision-making process suitable to the situation (Figure 3).

Regulation 9(4)(j) Management procedures to ensure compliance with the Code

Regulation 9(4)(j)(i): Methods for managing trees and maintaining minimum clearance

Under the City of Greater Dandenong’s tree maintenance contract ‘1819-52 – Tree Pruning Associated Works’, the tree maintenance Contractors are required to maintain the minimum clearance space for the period of the Program (Appendix 2: Part 3–Minimum Clearance Spaces). This includes pruning to account for any regrowth within the period of the Program, while still remaining compliant with the Code between cutting cycles.

Council applies rigour to the contract by undertaking audits of 100% of publicly managed trees within the Declared Area of the electric line network, following the schedule of the Program. The Senior Arborist inspects all trees in the Declared Area within a month of the completion of pruning works. Payment for each maintenance block is withheld until such time that the Contractor meets the requirements of the Code.

This contract also makes provision for any changes in clearance space requirements resulting from the annual review of Council’s ELCMP and/or changes in the Regulations.

Council’s management procedures for managing trees to ensure compliance with the Code are categorised as:

- training and qualifications
- proactive inspections
- undertaking tree works
- auditing and reactive works
- tree planting
- record keeping.

The methods to ensure compliance with the Code for each of these procedure categories are provided in the following sections.

Training and Qualifications

- Council’s procurement procedure requires the successful contractor to employ experienced arborists that have qualifications suitable to their job role [Appendix 3: Training requirements pertinent to job role](#).
- The successful contractor is required to submit upcoming training information for employees working on the tree maintenance contract as part of the ongoing monthly reporting. This includes each employee’s job role and qualifications relevant to their role.

Proactive Inspections

Every tree managed by the City of Greater Dandenong under or adjacent to powerlines, shown in regulation [9\(4\)\(f\)](#) of this Plan is inspected according to the block maintenance schedule (as per Figure 1).

This includes:

- A biennial (two-yearly) inspection of all trees adjacent to Low Voltage and High Voltage electric lines.
- Within the HBRA areas, annual inspection and pruning of all Council trees in the vicinity of powerlines will occur before the declaration of the fire season (Table 1).
- An annual inspection of trees in streets that cannot be effectively managed on a two-year cycle are included as two additional maintenance block zones. Street names and maps are reviewed annually and form part of the Plan. Refer to:
 - Annual Tree Pruning Block 1 - Table 2
 - Annual Tree Pruning Block 2 - Table 3

Table 1. Schedule for inspecting, pruning, and auditing Council trees adjacent to powerlines.

Greater Dandenong Pruning Precinct	Provisional completion date	Programmed Audit by Senior Arborist
Annual prune 2 (2023)	31 July 2024	By 14 Aug 2024
Block 12	31 August 2024	By 14 Sept 2024
Block 2	31 October 2024	By 14 Sept 2024
Block 5	30 November 2024	By 14 Dec 2024
Block 8	28 February 2025	By 14 Mar 2025
Block 1	30 April 2025	By 14 May 2025
Block 9	30 June 2025	By 14 July 2025
Block 13 (Non declared area)	30 June 2025	By 14 July 2025
Block 14 (Non declared area)	30 June 2025	By 14 July 2025
Annual prune 1 (2023)	31 August 2025	By 14 Sept 2025
Block 11	31 August 2025	By 14 Sept 2025
Block 4	31 December 2025	By 14 Jan 2025
Block 3	28 February 2025	By 14 March 2025
Block 7	30 April 2025	By 14 May 2025
Block 6	15 June 2025	By 14 July 2025
Block 10	30 June 2025	By 14 July 2025

Figure 4: Map of City of Greater Dandenong municipality showing maintenance blocks (1 – 14) for quick reference

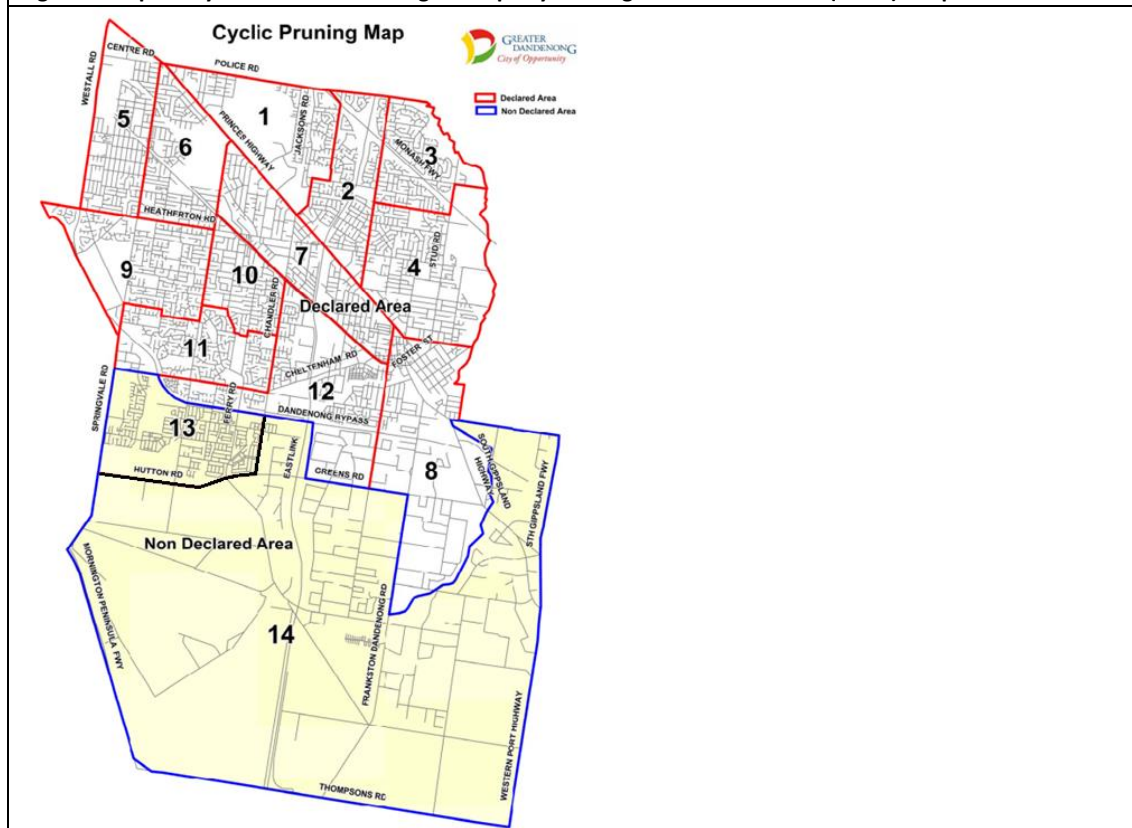


Table 2. Streets within Annual Tree Pruning Block 1 and map indicating locations.

Streets within Annual Tree Pruning - Block 1
<ul style="list-style-type: none"> • Springvale Road from Heatherton Road to Princess Highway (Block 6 Eastern side) • Union Road, Dandenong South (Block 12) HBRA clearances • Dunblane Street Noble Park (Block 7) • Hammond Road Dandenong South (From Cheltenham Road to Greens Road) (Block 12 Western side) • Stud Road from Brady Road north to the municipal border. Both sides of the road including parkland. HBRA clearances • Cheltenham Road from Perry Road to Stanley Road (South side of Road) (pruned to sky to reduce potential high voltage overhang) (Block 12) • Bennett Street Dandenong (Along Operations Centre frontage and trees within vicinity of powerlines in Grieves Reserve) (pruned to sky to reduce potential high voltage overhang) (Block 12)
Map highlighting Annual Block 1
<p>The map, titled "Annual Tree Pruning Block 1", shows a street network in Dandenong. Key roads highlighted in purple include Westall Road, Springvale Road, Police Road, Princes Highway, Monash Freeway, Brady Road, Stud Road, Cheltenham Road, Attenborough Street, Bennett Street, Hammond Road, Union Road, and Greens Road. Other roads shown include Dunblane Road, Corrigan Road, and South Gippsland Highway. A north arrow and a scale bar (0 to 200 metres) are located in the bottom left corner. The City of Greater Dandenong logo is in the top right corner.</p>

Table 3. Streets within Annual Tree Pruning Block 2 and map indicating locations.

Streets within Annual Tree Pruning - Block 2
<ul style="list-style-type: none"> • Queens Avenue Springvale (Block 5) • Osborne Avenue Springvale (Block 5) • Springvale Road from Heatherton Road to Princess Highway (Block 5 Western side) • Corrigan Road from Athol Road to Heatherton Road (Block 9) (Pin Oaks to be uplifted and cleared from powerlines) • Tatterson Road Dandenong South (Block 8) • Frankston Dandenong Road from Greens Road to Lonsdale Street (Block 8) • South Gippsland Highway from Greens Road to Princess Highway (Block 8) • Box Street Dandenong (Thomas Carroll Reserve) (Block 8) (pruned to sky to reduce potential high voltage overhang) • Hammond Road Dandenong South (From Cheltenham Road to Greens Road. (Block 8 Eastern side) • Webster Street Dandenong South (Trees from Reserve) (Block 8) (pruned to sky to reduce potential high voltage overhang)
Map highlighting Annual Block 2
<p style="text-align: center;">Annual Tree Pruning Block 2</p>

Undertaking Tree Works

After the initial block inspections, Contractors prune each tree in accordance with the Code and industry Best Practice – *Australian Standard 4373 Pruning of amenity trees (AS 4373)*. In cases where the minimum clearance space cannot be achieved while pruning to AS 4373, refer to Regulation [9\(4\)\(k\)](#) of this Plan.

From time to time, unsuitable tree growth will occur. A suitably qualified and experienced Arborist will determine that these trees cannot be managed to comply with the Code, they are not eligible for an exemption, and the appropriate tree removal protocols have been applied.

The process involves:

- In-house staff or contractor identifies a tree that cannot be managed by pruning to AS 4373
- An assessment recommending removal is provided to the Senior Arborist for approval
- The Senior Arborist or delegated arboricultural officer inspects the tree to confirm that:
 - the tree cannot be managed through pruning,
 - is not eligible for an exception, and
 - does not meet the criteria for alternative control mechanisms.
- Community consultation is undertaken regarding the removal of the tree
- Works are programmed as per the reactive works process
- Removal of tree and stump completed within 30 business days or in accordance with timelines required by Distribution Business if a shutdown is required for safety
- Actions recorded in the document management system
- If the site location is suitable and public consultation completed, tree replacement is programmed for the following year
- Formative pruning conducted during the tree establishment period
- Inspect and prune in accordance with Plan

Auditing and Reactive Works

Following the programmed cut of each maintenance block, Council's Senior Arborist or delegated officer undertakes an audit on 100% of trees adjacent electric lines. Where clearance does not meet the minimum clearance required by the Code and an exception does not apply, a recall notice is issued whereby the Contractor has 30 days to complete pruning. Recall audits are undertaken by Council's Senior Arborist at the 30-day timeframe. Payment for block maintenance is withheld until such time that recall works have been accepted. This includes accounting for regrowth that may occur before the next cutting cycle.

Where trees are identified as being non-compliant outside the normal block maintenance, these trees can be reported to Council customer service 03 8751 5100 and referred to the Senior Arborist or delegated officer for assessment of work requirements and allocated to Council's contractor.

- Non-urgent reactive works are to be completed within 30 business days of the works being allocated, unless another timeframe is determined by the Senior Arborist at the time of allocation.
- In situations of high priority, the primary aim is to respond within 1 hour and make the site safe within one hour or 24 hours of notification depending on the situation. Additional works will be scheduled as required.
- All works are recorded in the City of Greater Dandenong's document management system.
- Trees will be pruned to the minimum clearances outlined in the Electricity Safety (Electric Line Clearance) Regulations 2020. All pruning should conform to AS 4373 as far as practicable. If this is not possible the tree shall be referred to the Senior Arborist or delegated officer for alternative management solutions as per Section [9\(4\)\(k\)](#) of the Plan.

Tree Planting

A site assessment is undertaken prior to tree planting. Trees are planted near powerlines if the site location is appropriate. Tree species to be planted will be selected in accordance with the City of Greater Dandenong's Urban Tree Strategy. The Strategy stipulates that small to medium sized trees will be planted under powerlines to minimise future conflicts with powerlines and ensure code compliance (Appendix 4: Tree species suitable for planting near electric lines).

Formative pruning is undertaken for newly planted trees. This proactive approach to managing tree form assists with maintaining electric line clearance of future tree canopy. Council undertakes tree establishment audits, which includes assessment of formative pruning. Recalls are issued to Contractors where electric line clearance has not been considered in the formative pruning program.

Record keeping

Tree maintenance Contractors have access to Council's tree database where they are required to record details of all cyclic inspections and works completed on trees.

Contractors also report directly to Council on a monthly basis, detailing the following:

- Monthly works plan
- Monthly works completed
- Safety and loss prevention
- OHS & Environmental incidents
- Self-audits
- Work quality issues
- New staff
- Upcoming training information

Monthly reports from Contractors are reviewed and discussed to promote continual improvement and open communication between Council and Contractors. These reports are recorded in Council's document management system.

Regulation 9(4)(j)(ii)(A): Determining an additional distance

Minimum clearances for spans less than 100m in length in LBRA or less than 45m length in HBRA will be maintained in compliance with the distances in the clearance graphs in Schedule 2 of the Code.

- Graphs 1, 2, 3 and 4 of Schedule 2 of the Regulations will inform allowance in LBRA areas (Appendix 5: Applicable distance for middle two thirds of a span of an electric line – LBRA)
- Graphs 5 and 6 will inform allowance in HBRA areas (Appendix 6: Applicable distance for middle two thirds of a span of an electric line – HBRA)

Contractors engaged to undertake electric line clearance inspections and tree maintenance are required to demonstrate qualifications appropriate for their job roles. This includes the appropriate qualifications to:

- Confirm the significance of the vegetation in the area to be pruned
- Identify the conductor type
- Identify the total span length
- Identify tree location within that span
- Apply the corresponding graph/formula of Schedule 2 of the Code
- Reference the required clearance.

Regulations 9(4)(j)(ii)(B): Provision for additional distances for different parts of an electric line span

For spans greater than 100m in length in LBRA or greater than 45m length in HBRA the City of Greater Dandenong liaises with the Distribution Business to understand the required clearance distance to allow for sag and sway. Currently, the City of Greater Dandenong liaises with United Energy on an ad-hoc schedule to obtain relevant information for effective tree management around electric lines and maintain rapport. This occurs at a minimum timeframe of once a year, prior to updating this Plan.

Council has received GIS information of powerline spans from United Energy for 2022/23. The updated clearance requirements to account for sag and sway are recorded in the City of Greater Dandenong document management system and used to inform management practices. This information is also recorded against the affected trees in the tree database and is available to Contractors in the field via tablets.

The names and contract details for the Distribution Businesses and railway authorities that operate within City of Greater Dandenong are:

Company	United Energy
Contact	Jason Craig, Vegetation Stakeholder and Improvement Lead
Address	PO Box 449, Mount Waverley VIC 3149
Telephone	0402 386 940
Faults and emergencies	132 099

Company	PowerCor / CitiPower
Contact	Jason Craig, Vegetation Stakeholder and Improvement Lead
Address	L 8 40 Market Street, Melbourne Victoria 3000
Telephone	0402 386 940
Faults and emergencies	132 412 / 131 280

Company	AusNet Services
Contact	Spencer Few, Environment, Health, Safety and ORP Liaison Officer
Address	8 Beaconsfield Ave, Beaconsfield, 3807
Telephone	0439 563 262
Faults and emergencies	13 17 99

Company	Metro Trains
Contact	Katrina Lewis, Production Manager – Vegetation
Address	Level 16, 700 Collins Street, Docklands VIC 3008
Telephone	0405 506 488

Company	VicTrack
Address	Level 8, 1010 La Trobe Street, Docklands VIC 3008 GPD Box 1681, Melbourne VIC 3001
Telephone	1300 842 872

Regulation 9(4)(k): Procedures when impracticable to comply with AS 4373

The City of Greater Dandenong requires all staff and contractors pruning trees within the municipality to comply with AS 4373 as far as is reasonably practicable.

Reasonably practicable in relation to AS 4373 means that which is, or was at a particular time, reasonably able to be done in relation to ensuring continued tree health and future tree safety, taking into account and weighing up all relevant matters including:

- Will the action create a defect, hazard, loss of tree health or aesthetic value in the present or future?
- What will the impact be on the tree or future safety of the public?
- What the person concerned knows, or ought reasonably to know about:
 - The hazard or the risk
 - Ways of eliminating or minimising the risk
- Are other resources or techniques available to complete works to the standard?
 - This includes decision making to select the correct plant, equipment, and clearing techniques for the job
- If cost required to complete work to the standard grossly outweigh tree value.

Where pruning to AS 4373 is not practicable the trees are to be referred to the Senior Arborist or a delegated Council Officer who holds a qualification AQF Level 5 or above in Arboriculture to make an assessment on whether it is reasonably practicable to deviate from AS 4373.

The City of Greater Dandenong ensures contractors are appropriately trained and aware of the principles of AS 4373, and what is reasonably practicable, by:

- Referencing the standard in internal guidelines
- Referencing the standard in tender documents for contractors
- Including the City of Greater Dandenong’s definition of ‘reasonably practicable’ in contractor induction and reiterating at monthly contract meetings
- Emphasise selecting the best plant, equipment, and clearing techniques for the job
- Ensuring contractors undertaking electric line clearance work have, at a minimum:
 - Certificate Level III in Horticulture or Arboriculture,
 - Certificate Level II in ESI – Power line Vegetation Control, and
 - 3 years industry experience that demonstrates understanding of AS 4373 (See Appendix 3: Training requirements pertinent to job role).

Where pruning to achieve clearance will not allow compliance with AS 4373, the City of Greater Dandenong may elect to:

- Increase the pruning frequency to minimise the required pruning
- List the tree for an exception
- Remove scaffold or parent limbs
- Investigate the potential for an exemption or alternative compliance mechanisms
- Remove trees where the tree is of low retention value, or the resulting pruning would leave trees unsuitable for retention.

The decision will be guided by costing of the options in terms of tree value, works cost, and the surrounding environment of the tree. This includes considering alternative plant, equipment, and cutting techniques to complete the job. Where street trees are to be removed, the resident adjacent the property will be notified in writing that the removal will occur within 30 days.

Where significant reserve trees are to be removed, all residents with a view of the tree will be notified in writing that the removal will occur within 30 days, and additional signage will be posted within the reserve.

Regulation 9(4)(l): Alternative compliance mechanisms

The City of Greater Dandenong has not applied for and currently does not plan to apply for any alternative compliance mechanism under clause 31 of the Code.

If alternative compliance mechanisms are required, Council will apply to Energy Safe Victoria. The application would include the:

- Details of the alternative compliance mechanism
- Procedures to be adopted for commissioning, installing, operating, maintaining, and decommissioning the proposed alternative compliance mechanism
- Published technical standards that will be complied with when commissioning, installing, operating, maintaining and decommissioning the alternative compliance mechanism
- Location or class of the span to which the alternative will be applied
- Specification for the proposed minimum clearance space in relation to the span, or class of spans.

The application will also include a copy of:

- The formal safety assessment prepared under Clause 32 of the regulations
- Written agreement from the owner or the owner or operator of the span; or
- Written agreement from the owner of the owner or operator of the class of spans.

If, and as requested by Energy Safe Victoria, Council will provide further information or material about the application.

Regulations 9(4)(m)(i)–(ii): Approval for alternative compliance mechanism

At the time of preparation of this Plan, all trees have been pruned in compliance with AS 4373.

Therefore, Council does not hold an approval for an alternative compliance mechanism, and none is in effect. Contractors are required to report any such trees to Council so that they can be identified in the tree database and actioned as necessary.

Regulation 9(4)(n): Performance assessment measures

The City of Greater Dandenong and the Senior Arborist have defined Key Performance Indicators (KPIs) to assist in measuring the implementation of the Plan:

- Preparation of the Electric Line Clearance Management Plan prior to 31 March each year,
- Completion of the Proactive Program for pruning as per schedule,
- Completion of 12 audits of reactive works and 7 audits of cyclic contractor per annum,
- A minimum 95% compliance for in zone audits,
- 100% of non-compliance rectified within 30 business days of notification,
- All hazards identified in contractor OHS inspections addressed within required timeline,
- Respond to all pruning requests from the Distribution business within the required timeline,
- Reduction in the number of Customer Service Requests received for electric line clearance,
- No emergency clearances.

Key Performance Indicators are monitored via:

- Mapping the inspection and pruning program against the zone maintenance progress,
- Mobile work site safety audits,
- Post works auditing and inspections by the Senior Arborist,
- Monitoring levels of customer requests relating to powerlines,
- Compliance results from the Network Operator's (when supplied), and
- Reporting through document management system and Position Description KPIs.

Results are reported via:

- Internal team meetings,
- Monthly contract meetings, and
- Monthly reports submitted to Management.

Reporting of KPIs is used to aid in:

- Issuing of recalls where required,
- Individual performance management for internal staff,
- Development of procedures and processes,
- Development of pruning programs and Contract Specification, and
- Selection of suitable tree species for planting near powerlines.

Regulation 9(4)(o): Audit processes to determine compliance

The Senior Arborist is responsible for audits to verify compliance with the Code. These include:

- A quality audit is undertaken by the Senior Arborist or delegated Council Officer who is a suitably qualified arborist for each completed declared area to ensure compliance with:
 - the Electricity Safety (Electric Line Clearance) Regulations 2020, and
 - quality of arboricultural works and compliance with AS 4373.
- A minimum of 1 Safety Audit per block is undertaken randomly on site by the Senior Arborist, Inspecting Arborist or delegated Council Officers to ensure correct OH&S and traffic/pedestrian control are undertaken as well as appropriate controls are in place for powerline tree trimming.
- Pre-works site checks are carried out and documented for record keeping by all Council staff and contractors.
- The competency and qualification of electrical line clearance workers meets the requirements of the Regulations, and accurate with records supplied by the Contractor at the monthly contract meetings.

Once identified, non-compliance is reported by the Senior Arborist and is rectified within 30 working days. Confirmation of rectification is provided in writing to the Senior Arborist and included in the monthly contract report. Contractors are required to provide a report in response to the non-compliance identifying the cause for non-compliance and actions that will mitigate the cause in future works.

Results of audits are reported via:

- internal team meetings, and
- monthly contract meetings.

Audit results and resulting communications are stored in the City of Greater Dandenong's document management system.

Regulation 9(4)(p): Qualifications and experience

Under the '1819-52 – Tree Pruning Associated Works Contract' with Council, all employees of the Contractor involved in work under this Plan are required to be a "qualified person". Under Regulation 616(2) of the [Electricity Safety \(General\) Regulations 2019](#), a qualified person means "a person who holds a current certificate that is approved by Energy Safe Victoria, specifying satisfactory completion of a training course in tree clearing".

As defined in the Regulations, a "suitably qualified arborist" has:

- As a minimum, a Certificate III in Arboriculture including the 'Perform a ground-based tree defect evaluation' unit or equivalent,
- At least three years of experience assessing trees.

To ensure only appropriately qualified and experienced contractor personnel are employed on the City of Greater Dandenong '1819-52 – Tree Pruning Associated Works Contract', Council conducts annual desk-top audits of Contractors' training records received initially via tender submissions, and ongoing via monthly contractor reporting and annual reviews.

The training records must include:

- job role for each employee
- most recent date of each qualification
- qualifications that are soon to expire
- where training is scheduled

The relevant training and qualifications for each employee must meet the minimum requirement for their job role, as specified in Appendix 3: Training requirements pertinent to the job role.

The units of competency sometimes change to reflect current industry best practice. The minimum required units under the current [Certificate II in ESI - Powerline Vegetation Control](#) are specified in Appendix 3, and are included in the checklist for the Senior Arborist when auditing contractors. Any employees found to be on site without the required training and qualifications will be instructed to cease work immediately and requested to leave site until the required training and qualification records can be provided.

Regulation 9(4)(q): Notification and consultation procedures

The tree maintenance schedule is available to all residents on Council's website. This is reviewed monthly to reflect the progress of tree work, including any unforeseen changes to the schedule.

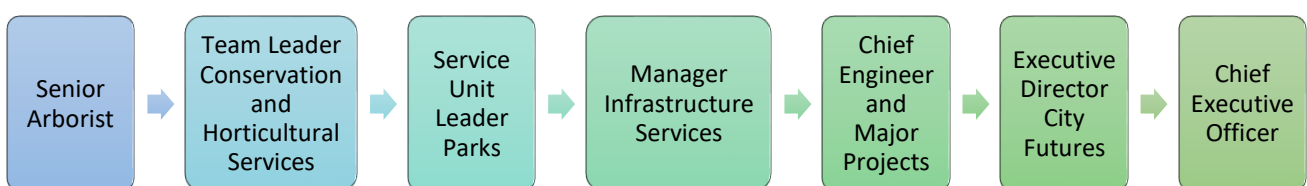
Pursuant to Clause 16(3) of Division 3 of the Code, prior to cutting or removing a tree identified under Regulation 9(4)(h)(ii) or (iii) of this Plan, unless cutting or removal is required urgently, written notice will be given if:

- the tree is within the boundary of private property; or
- the tree is on land that is managed by a Council that is not the responsible person; or
- the tree is on land that is contiguous to private property and the use of that property may be affected during the cutting or removal.

Within 14–60 days prior to the commencement of electrical line clearance works, Council will provide notification to affected persons.

Regulation 9(4)(r): Independent dispute resolution procedure

If a dispute arises during the process of consultation/negotiation between affected landowners and the Council, regarding proposed clearing/pruning/alternative compliance mechanisms, attempts to resolve the complaint internally shall be resolved at the lowest management level possible. If resolution is not possible, the complaint shall be escalated to the next level of management. The preferred internal process of escalation is as follows:



The person responsible for resolving official disputes between Council and members of the public relating to the issues discussed in the Plan is:

Name	Gareth Pickard
Position	Senior Arborist
Address	City of Greater Dandenong 20 Bennet Street, Dandenong, VIC 3175
Contact	T: 0417 543 396 E: Council@cgd.vic.gov.au

If the dispute is not resolved using this procedure, the dispute will be referred in writing to the [Energy and Water Ombudsman](#) (Victoria) or an alternative dispute resolution entity.

If a dispute arises between Council and a Distribution Business:

- In the first instance, the person responsible for this Plan will negotiate with the Distribution Business’ designated contact
- If the dispute remains unresolved, it will be escalated within Council’s internal process as above for negotiation with the equivalent management level of the Distribution Business
- If a dispute cannot be resolved between Council and a Distribution Business, Energy Safe Victoria will be contacted for clarification of the statutory requirements and assistance in resolving the disputed matter.

Regulation 9(4)(s) Exemptions and exceptions

Exemptions

Under Clause (11) of the Regulations, City of Greater Dandenong has not been exempted by Energy Safe Victoria from any of the requirements of these Regulations subject to any conditions specified by Energy Safe Victoria.

Exceptions

Council undertakes individual assessment of any trees notified by Contractors that cannot conform to both the Code and AS 4373 to determine whether an Exception is applicable. Exceptions allowed under the Code are provided under [Clauses 4–7](#) in Table 5. Council does not seek to apply for Exceptions under Clauses 4–6 at this time; however, Schedule 1 outlines the requirements for these Clauses if sought in the future.

Currently, City of Greater Dandenong has no Exception (Table 4).

Table 4: City of Greater Dandenong – current Exceptions

Asset #	Address	Species	Pole 1	Pole 2	Reason	Last works	Last inspection
15091	124 Lightwood Road, Noble Park	<i>Eucalyptus cladocalyx</i>	32691	32690	Branch >130 mm at point of entry to clearance space but not within 500 mm of LV line	Tree removed. 22/04/2023	

Regulations 10(1)–(6): Obligations relating to this Plan

Regulations 10(1)–(4): Requests from Energy Safe Victoria

If requested in writing by Energy Safe Victoria, the City of Greater Dandenong, the responsible person for this Electrical Line Clearance Management Plan (ELCMP), prepared under Regulation 9, will within 14 days or otherwise specified:

- Provide a copy of this Plan to Energy Safe Victoria
- Supply further information or material relating to this Plan
- Amend the Plan if instructed to do so.

Regulation 10(5): Plan compliance

Pending the approval of this Plan by Energy Safe Victoria, the City of Greater Dandenong will comply with all requirements.

Regulation 10(6): Plan publication

A copy of the Plan is available on City of Greater Dandenong’s website.

Schedule 1 – Code of Practice for Electric Line Clearance

Part 2—Clearance responsibilities

Clauses 4–7: Exceptions to minimum clearance space

Part 2, Division 1, Clauses 4–7 of the Code, allow for exceptions to the Code as per the conditions in Table 5.

Table 5. Conditions for exceptions to minimum clearance for different branch types around different line types.

Clause	Applicable area	Line type	Tree part	Condition for exception
4 *See conditions, below table	All areas	Insulated, low voltage	Structural branches around lines	The branch is > 130 mm wide at the point it enters the minimum clearance space; AND the branch is: <ul style="list-style-type: none"> • > 150 mm from the line if the span distance is ≤ 40 m OR • > 300 mm from the line if the span is > 40 m; AND In the last 14 months: <ul style="list-style-type: none"> • a suitably qualified arborist (Regulation 9(4)(p)) has inspected the tree and advised that it has no visible defects that could cause the branch to fail and contact the electric line, and • Council has completed a risk assessment of the branch and implemented mitigation measures for any identified risks.
5	All areas	Insulated, low voltage	Small branches around lines	The branch: <ul style="list-style-type: none"> • is less than 10 mm wide at the point at which it enters the minimum clearance space; AND <ul style="list-style-type: none"> • has been removed from the minimum clearance space within the past 12 months.

Clause	Applicable area	Line type	Tree part	Condition for exception
6 *See conditions, below table	LBRA	Uninsulated, low voltage	Small branches under lines	<p>The branch is less than 10 mm wide at the minimum clearance space entry point and is no more than 500 mm inside the minimum clearance space;</p> <p>AND</p> <p>the branch originates at a point below the height of the electric line;</p> <p>AND</p> <p>if the branch is within the minimum clearance space around the middle two-thirds of the span, the span is fitted with:</p> <ul style="list-style-type: none"> • 1 conductor spreader if the span is ≤ 45 m <p>OR</p> <ul style="list-style-type: none"> • 2 conductor spreaders if the span is > 45 m. <p>*Spreader not required if the branch comes within the minimum clearance space around the first or last sixth of the span.</p> <p>AND</p> <p>In the last 14 months:</p> <ul style="list-style-type: none"> • a suitably qualified arborist (Regulation 9(4)(p)) has inspected the tree, and • Council has completed a risk assessment of the branch and implemented mitigation measures for any identified risks.
7 *See conditions, below table	LBRA	Uninsulated, low voltage	Structural branches around lines	<p>if the branch is within the minimum clearance space around the middle two-thirds of the span, the span is fitted with:</p> <ul style="list-style-type: none"> • 1 conductor spreader if the span is ≤ 45 m <p>OR</p> <ul style="list-style-type: none"> • 2 conductor spreaders if the span is > 45 m. <p>*Spreader not required if the branch comes within the minimum clearance space around the first or last sixth of the span.</p> <p>AND</p> <p>the branch is > 130 mm wide at the point it enters the minimum clearance space</p> <p>AND</p> <p>The branch is no more than 500 mm inside the minimum clearance space</p> <p>AND</p> <p>In the last 14 months:</p> <ul style="list-style-type: none"> • a suitably qualified arborist (Regulation 9(4)(p)) has inspected the tree and advised that it has no visible defects that could cause the branch to fail and contact the electric line, and • Council has completed a risk assessment of the branch and implemented mitigation measures for any identified risks.

***Conditions:** If Council leaves a branch within the minimum clearance space for an electric line under Clauses 4, 6, and 7, it retains tree database and GIS systems for at least five years on:

- Each inspection
- All advice referred to regarding the branch identified as having no structural defects
- Each risk assessment on any risks posed by the branch
- The mitigation measures to effectively mitigate any identified risks posed by the branch.

All trees on the Exception register are re-assessed annually and inspected by Council’s Senior Arborist following pruning.

Clause 9: Responsible person may cut or remove hazard tree

If a Council employee or contractor identifies a tree as likely to fall onto or otherwise come into contact with an electric line or has regrowth that will enter the clearance space before the next scheduled visit, the tree may be pruned or removed provided that:

- The tree has been assessed by a suitably qualified arborist who must consider:
 - the likelihood of contact with electric line,
 - tree health, defects, size of failure, target potential
 - Whether the tree qualifies for an exception to the minimum clearance space as per Clause 4, 5, 6, and 7 of the Code.
 - local environmental and safety factors, as per current Job Safety Analysis requirements,
 - history and significance of the tree, and
 - the presence of habitat or fauna
- the assessment is recorded on the tree data base,
- works are undertaken with regard to [Regulations 9\(4\)\(i\) and \(j\)](#) of the Plan, and
- affected persons are notified as per the City of Greater Dandenong’s adopted practice.

As the asset owner of the trees covered under this plan, the City of Greater Dandenong reserves the right to prune further than 1 metre from the minimum clearance space or remove hazard trees where they cannot be made safe or be retained as useful assets.

Division 2—Manner of cutting and removing trees

Clause 11: Cutting or removal of indigenous or significant trees must be minimised

The City of Greater Dandenong provides information to contractors and staff regarding trees designated as having native, cultural or environmental significance or that are listed within a planning scheme within the municipality. All trees that are included in the below categories are identifiable in Council’s tree database by the category ‘significant’, and a suitably qualified arborist is notified and engaged in a decision-making process if these trees are recommended for works outside of AS 4373 (Figure 3). The Senior Arborist is a suitably qualified arborist.

(3)(a) Native trees

Indigenous tree species are common and widely planted throughout the streets of City of Greater Dandenong. Council maintains a tree database that identifies the location and species of each tree. To ensure the trees are identified correctly, City of Greater Dandenong utilises trained and qualified arborists for inspections who are able to identify the relevant species.

Before pruning in an area, the contractor is required to:

- Have a comprehensive understanding of trees that are indigenous to the region
- Have the ability to identify the tree and cross reference with Council’s tree database to ensure records are accurate

A list of species can be found at Appendix 1: Indigenous Species List

The City of Greater Dandenong will also seek specialist advice (where necessary) to determine if any species (or habitat thereof) or communities on the [Flora and Fauna Guarantee Act Threatened List](#) are endangered by works to prune or remove trees.

(3)(b) Trees listed in a planning scheme to be of ecological, historical or aesthetic significance

Identified areas of historical, cultural, environmental, ecological, and aesthetical importance are covered by Vegetation Protection Overlays (VPO), Environmental Significance Overlays (ESO), and Heritage Overlays (HO) in the Planning Scheme. Information of trees within these overlays includes:

- Tree species (and approximate number of specimens if greater than one)

- Address
- Address of other affected properties.

After each review of the City of Greater Dandenong Planning Scheme, Council reviews the trees that may be affected, and updates the tree database accordingly. Before tree maintenance works in an area, the contractor is required to check Council’s tree database to see if any trees are significant.

The [City of Greater Dandenong Planning Scheme](#) is located on the Planning Vic website and is access and reviewed annually in preparation for the Plan. Currently, there are no ESOs or VPOs relevant to Declared Areas of City of Greater Dandenong, however there are 35 locations within City of Greater Dandenong that are listed in the HO that have applicable tree controls. Six of these locations fall within the Declared Area and trees in these locations have been categorised as ‘significant’ in the tree database (Figure 3). The most up to date Schedule is reviewed from: [Greater Dandenong Planning Scheme – Schedule to Clause 43.01 Heritage Overlay](#).

(3)(c) Trees of cultural or environmental significance

The City of Greater Dandenong reviews the advice provided by the [Aboriginal Cultural Heritage Register and Information System](#) (ACHRIS) as part of preparation of the Plan.

Information regarding specific trees on the Aboriginal Cultural Heritage Register is not publicly available and a request is made annually via ACHRIS to obtain the most up-to-date information. This information is recorded within the tree database as a ‘significant’ tree and follows the process set out in Figure 3.

Clause 12: Cutting or removing habitat for threatened fauna

Should threatened fauna be identified, the following process shall be followed:

- Location of threatened fauna and associated habitat mapped and tree maintenance and inspection teams notified,
- Tree assessment conducted by a suitably qualified arborist and results recorded in tree data base. The assessment:
 - considers tree health, structure and potential risk,
 - considers the history, location and foreseeable local conditions, and
 - aims to identify if the fauna using the tree is a threatened species.
- Once identified the breeding season for the fauna using the tree will be determined.
- Specialist advice may be sought to identify fauna, determine breeding season if required or to translocate fauna,
- Assessment results and information regarding management of the fauna will be referred to the Senior Arborist for approval prior to commencing works,
- Where practicable works will be undertaken outside the breeding season,
- The tree pruned to habitat until breeding season is complete, or
- Relocation of the fauna can be considered to make safe an unsafe situation as identified in [Clause 9](#), or if it is not practical to undertake works outside of the breeding season.

As part of the preparation for the Plan, the City of Greater Dandenong will consult with all relevant bodies and standards to ensure all organisational procedures are current.

Division 3—Notification, consultation and dispute resolution

Clause 17: Responsible person must publish notice before cutting or removing certain trees

The City of Greater Dandenong provides notification to the public by displaying the tree maintenance schedule on the website. If pruning is not expected to commence within these timeframes, the schedule is updated to reflect the progress of the tree program. This is reviewed and updated monthly, following Contractor meetings and reporting.

Division 4—Additional duties of responsible persons

Clause 20: Duty relating to the safety of cutting or removal of trees close to an electric line

The City of Greater Dandenong requires all staff and contractors to hold the qualification of Cert II ESI – Powerline Vegetation Control and comply with the guidelines and limits set within either ESV - Electrical Safety Rules for Vegetation Work near Overhead Powerlines by Non-electrical workers (Electrical Safety Rules) or rules set by the asset owner, whichever is greater.

If staff or contractors have concerns about the safety of cutting or removal of a tree for which the Council has clearance responsibilities, the Council will consult:

Business	Contact	Phone	Email
Vic Track	Greg Peel	0417 584 179	gregory.peel@victrack.com.au
United Energy	Jason Craig	0402 386 940	JCraig@powercor.com.au
Metro Trains	Katrina Lewis	0405 506 488	Katrina.Lewis@metrotrains.com.au

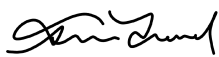
Clause 21: Duty relating to assisting to determine the allowance for conductor sag and sway

For spans greater than 100m in length in LBRA or greater than 45m length in HBRA the City of Greater Dandenong liaises with the Distribution Business, United Energy, to understand the required clearance distance to allow for sag and sway. Currently, the City of Greater Dandenong liaises with United Energy on an ad-hoc schedule to obtain relevant information for effective tree management around electric lines and maintain rapport. This occurs at a minimum timeframe of once a year, prior to updating this Plan.

Council has received GIS information of powerline spans from United Energy for 2022/23. The updated clearance requirements to account for sag and sway are recorded in the City of Greater Dandenong document management system and used to inform management practices. This information is also recorded against the affected trees in the tree database and is available to Contractors in the field via tablets.

Date: 19 March 2024

Authorised by:



Tim Ford
Service Unit Leader
Parks

Reviewed by:



Matt Berry
Manager Infrastructure Services
& Planning

Authorised by:



David Fice
Chief Engineer and Major
Projects

Reviewed by:



Sanjay Manivasagasivam
Executive Director
City Futures

Appendix 1: Indigenous Species List

Native Trees	
Botanic Name	Common Name
<i>Acacia dealbata</i>	Silver Wattle
<i>Acacia implexa</i>	Lightwood Wattle
<i>Acacia leprosa</i>	Cinnamon Wattle
<i>Acacia mearnsii</i>	Black Wattle
<i>Acacia melanoxylon</i>	Blackwood
<i>Acacia oxycedrus</i>	Spike Wattle
<i>Acacia pycnantha</i>	Golden Wattle
<i>Acacia stricta</i>	Hop Wattle
<i>Acacia verticillata</i>	Prickly Moses
<i>Allocasuarina littoralis</i>	Black Sheoke
<i>Allocasuarina verticillata</i>	Drooping Sheoke
<i>Banksia integrifolia</i>	Coast Banksia
<i>Banksia marginata</i>	Silver Banksia
<i>Bursaria spinosa</i>	Sweet bursaria
<i>Eucalyptus camaldulensis</i>	River Red Gum
<i>Eucalyptus cephalocarpa</i>	Silver-leaved Stringy-bark
<i>Eucalyptus ovata</i>	Swamp Gum
<i>Eucalyptus pauciflora</i>	Snow Gum
<i>Eucalyptus pryoriana</i>	Coast Manna Gum
<i>Eucalyptus radiata</i>	Narrow-leaved Peppermint
<i>Eucalyptus viminalis</i>	Manna Gum
<i>Eucalyptus melliodora</i>	Yellow Box
<i>Goodia lotifolia</i>	Golden Tip
<i>Kunzea ericoides</i>	Burgan
<i>Melaleuca ericifolia</i>	Swamp Paperbark
<i>Melaleuca squarrosa</i>	Scented Paperbark
<i>Prostanthera lasianthos</i>	Victorian Christmas Bush
<i>Viminaria juncea</i>	Golden Spray

Appendix 2: Part 3–Minimum Clearance Spaces

Division 1—Standard minimum clearance spaces

Clause	Line type	Area type	Minimum clearance space	Applicable distance (AD)
24	Insulated	All	The space extending away from the line in all directions perpendicular to its axis for the applicable distance (Figures 1, 2 & 3 of the Code)	<p>For the first & last sixths of the span:</p> <ul style="list-style-type: none"> • 300 mm <p>For the middle 2/3rds of the span (Graph 1 of the Code):</p> <ul style="list-style-type: none"> • if the span is ≤ 40 m: 300 mm • if the span is > 40 m & ≤ 100 m: $300 + (\text{span distance} - 40) \times 10 = \text{AD}$ • if the span is > 100 m: 900 mm
25	Uninsulated, low voltage	LBRA	The space extending away from the line in all directions perpendicular to its axis for the applicable distance and if the span is greater than 100 m, additional distance to allow for sag & sway (Figures 1 & 4 of the Code).	<p>For the first & last sixths of the span:</p> <ul style="list-style-type: none"> • 1000 mm <p>For the middle 2/3rds of the span (Graph 2 of the Code):</p> <ul style="list-style-type: none"> • if the span is > 45 m & ≤ 100 m: $1000 + (\text{span distance} - 45) \times (1500 \div 55)$ • if the span is > 100 m: 2500 mm
26	Uninsulated, High voltage (other than 66 000 V line)	LBRA	The space extending away from the line in all directions perpendicular to its axis for the applicable distance and if the span is greater than 100 m, additional distance to allow for sag & sway (Figures 1 & 3 of the Code).	<p>For the first & last sixths of the span:</p> <ul style="list-style-type: none"> • 1500 mm <p>For the middle 2/3rds of the span (Graph 3 of the Code):</p> <ul style="list-style-type: none"> • if the span is > 45 m & ≤ 100 m: $1500 + (\text{span distance} - 45) \times (1000 \div 55)$ • if the span is > 100 m: 2500 mm
27	Uninsulated, 66 000 V	LBRA	The space extending away from the line in all directions perpendicular to its axis for the applicable distance and if the span is greater than 100 m, additional distance to allow for sag & sway (Figures 1 & 5). The space above these spaces must also remain clear.	<p>For the first & last sixths of the span:</p> <ul style="list-style-type: none"> • 2250 mm <p>For the middle 2/3rds of the span (Graph 4 of the Code):</p> <ul style="list-style-type: none"> • if the span is ≤ 45 m: 2250 • if the span is > 45 m & ≤ 100 m: $(2500 + (\text{span distance} - 45) \times (1250 \div 55))$ • if the span distance is > 100 m: 3500 mm
28	Uninsulated, low & high voltage (other than 66 000 V)	HBRA	The space extending away from the line in all directions perpendicular to its axis for the applicable distance	<p>For the first & last sixths of the span:</p> <ul style="list-style-type: none"> • 1500 mm <p>For the middle 2/3rds of the span (Graph 5 of the Code):</p>

Clause	Line type	Area type	Minimum clearance space	Applicable distance (AD)
			and additional distance that allows for conductor sag and sway (Figures 1 & 5 of the Code). The space above these spaces must also remain clear.	<ul style="list-style-type: none"> • if the span is ≤ 45 m: 1500 mm • if the span is > 45 m & ≤ 500 m: $(1500 + (\text{span distance} - 45) \times (500 \div 303))$ • if the span is > 500 m: 2250 mm
29	Uninsulated 66 000 V	HBRA	The space extending away from the line in all directions perpendicular to its axis for the applicable distance and an additional distance that allows for conductor sag and sway (Figures 1 & 5 of the Code). The space above these spaces must also remain clear.	<p>For the first & last sixths of the span:</p> <ul style="list-style-type: none"> • 2250 mm <p>For the middle 2/3rds of the span (Graph 6 of the Code):</p> <ul style="list-style-type: none"> • if the span is ≤ 45 m: 2250mm • if the span is > 45 m & ≤ 350 m: $(2250 + (\text{span distance} - 45) \times (750 \div 305))$ • if the span is > 350 m: 3000 mm

Appendix 3: Training requirements pertinent to job role

All contractors and employees undertaking work on an electric line clearance site will be inducted and have the current training qualification of **Certificate II in ESI – Powerline Vegetation Control (UET20321)** or equivalent. This is refreshed annually.

The most recent training package for this qualification is updated from training.gov.au and reviewed annually, in preparation for this Plan.

All job roles will have the five core units:

Core units

AHCMOM213	Operate and maintain chainsaws
UETDREL002	Comply with environmental requirements
UETDREL006	Work safely in the vicinity of live electrical apparatus as a non-electrical worker
UETDRVC001	Apply work health and safety requirements for powerline vegetation control
UETDRVC009	Monitor vegetation control work in the vicinity of live electrical apparatus

Electives of the qualification will vary, depending on the specific job role. The City of Greater Dandenong requires the following units of competencies for each of the below job roles.

Inspecting Arborist:

Minimum Certificate III in Arboriculture plus the 'Perform a ground-based tree defect evaluation' (AHCARB408) module, and a minimum of 3 years industry experience.

EWP Operator and Safety Observer:

UETDRVC004	Control vegetation in the vicinity of live electrical apparatus from an elevated work platform
UETDRVC007	Control vegetation using pruning techniques
Worksafe TLILIC0005	High Risk Work Licence (WP) Licence to operate a boom-type elevating work platform (boom length 11 metres or more)
UETDRVC25	Use elevated platform to cut vegetation above ground level near live electrical apparatus
UETDRVC33	Apply pruning techniques to vegetation control near live electrical apparatus
UETDRMP004	Perform EWP controlled descent escape
UETDRMP005	Perform EWP Rescue

EWP Operator and Safety Observer Annual Refresher:

UETDRMP004	Perform EWP controlled descent escape
UETDRMP005	Perform EWP Rescue
HLTAID009	Provide cardiopulmonary resuscitation
UETDRMP010	Provide first aid in an ESI environment
	Safe Approach Distances - Vegetation Work

Climbing Arborist and Safety Observer:

UETDRVC006	Control vegetation in the vicinity of live electrical apparatus from within the tree
UETDRVC007	Control vegetation using pruning techniques
UETDRVC010	Perform rescue from within a tree in the vicinity of live electrical apparatus

Climbing Arborist and Safety Observer Annual Refresher:

UETDRVC010	Perform rescue from within a tree in the vicinity of live electrical apparatus
HLTAID009	Provide cardiopulmonary resuscitation
UETDRMP010	Provide first aid in an ESI environment
	Safe Approach Distances - Vegetation Work

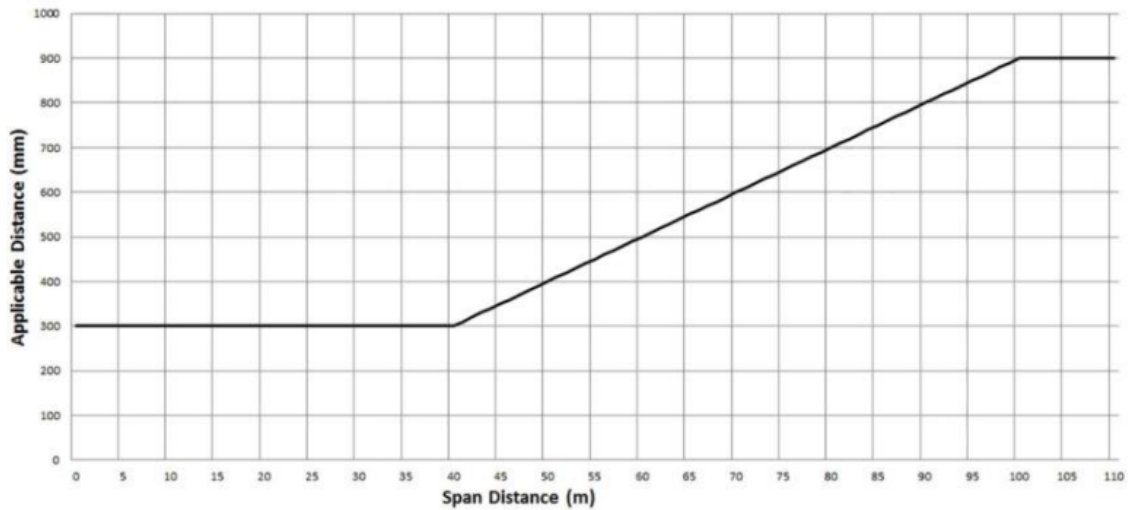
Appendix 4: Tree species suitable for planting near electric lines

Species Planted under powerlines	Tree size at Maturity
<i>Acacia implexa</i>	Small to medium
<i>Acer campestre</i> 'Evelyn'	Small to medium
<i>Brachychiton populneus</i>	Medium
<i>Eucalyptus leucoxylon</i> 'Eukie Dwarf'	Small to medium
<i>Eucalyptus winnerensis</i> 'Honey Pots'	Small to medium
<i>Gleditsia triacanthos var.inermis</i> 'Elegantissima'	Small
<i>Lagerstroemia indica</i> x <i>L. fauriei</i> 'Zuni'	Small
<i>Lagerstroemia indica</i> x <i>L. fauriei</i> 'Biloxi'	Small
<i>Leptospermum petersonii</i>	Small to medium
<i>Malus ioensis</i> 'Plena'	Small
<i>Olea europea</i> 'Swan Hill'	Small
<i>Olea europea</i> 'Tolley's Upright'	Small
<i>Pistacia chinensis</i>	Small
<i>Pyrus calleryana</i> 'Capital'	Small to medium
<i>Tilia cordata</i> 'Greenspire'	Small to medium
<i>Tristaniopsis laurina</i>	Small to medium

Appendix 5: Applicable distance for middle two thirds of a span of an electric line – LBRA

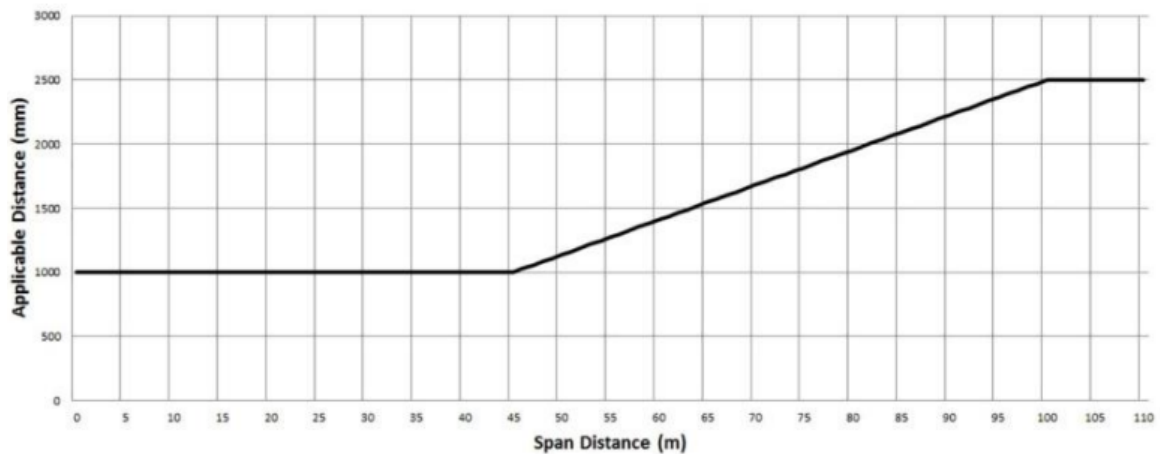
GRAPH 1—INSULATED ELECTRIC LINES IN ALL AREAS

Clauses 3 and 24



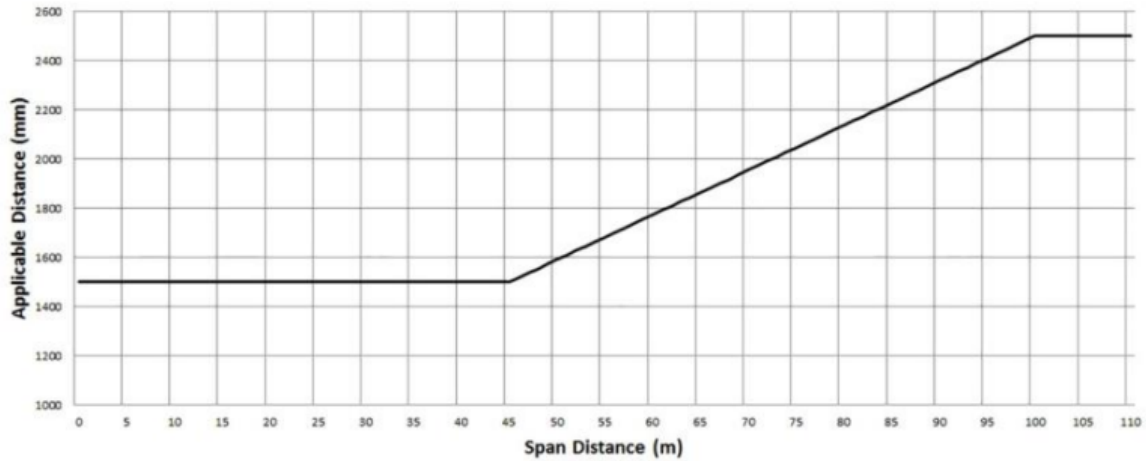
GRAPH 2—UNINSULATED LOW VOLTAGE ELECTRIC LINE IN LOW BUSHFIRE RISK AREA

Clauses 3 and 25



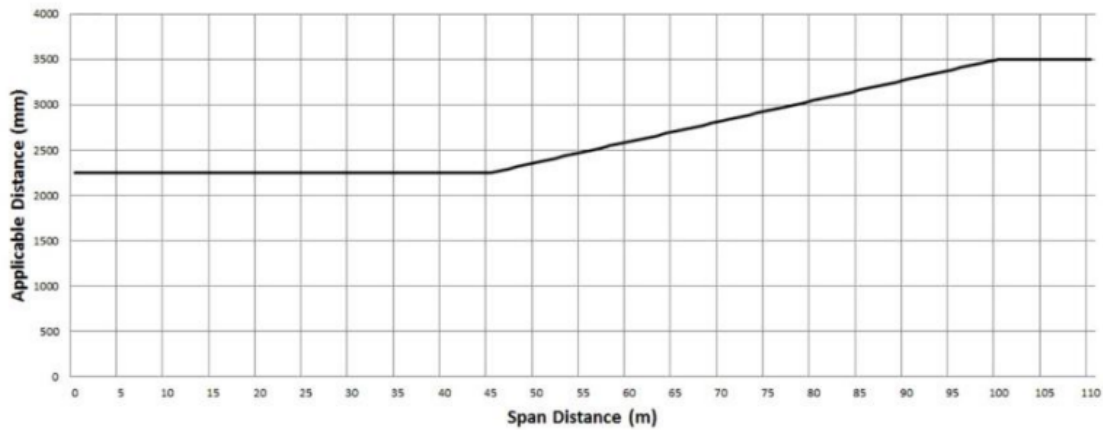
GRAPH 3—UNINSULATED HIGH VOLTAGE ELECTRIC LINE (OTHER THAN A 66 000 VOLT ELECTRIC LINE) IN LOW BUSHFIRE RISK AREA

Clauses 3 and 26



GRAPH 4—UNINSULATED 66 000 VOLT ELECTRIC LINE IN LOW BUSHFIRE RISK AREA

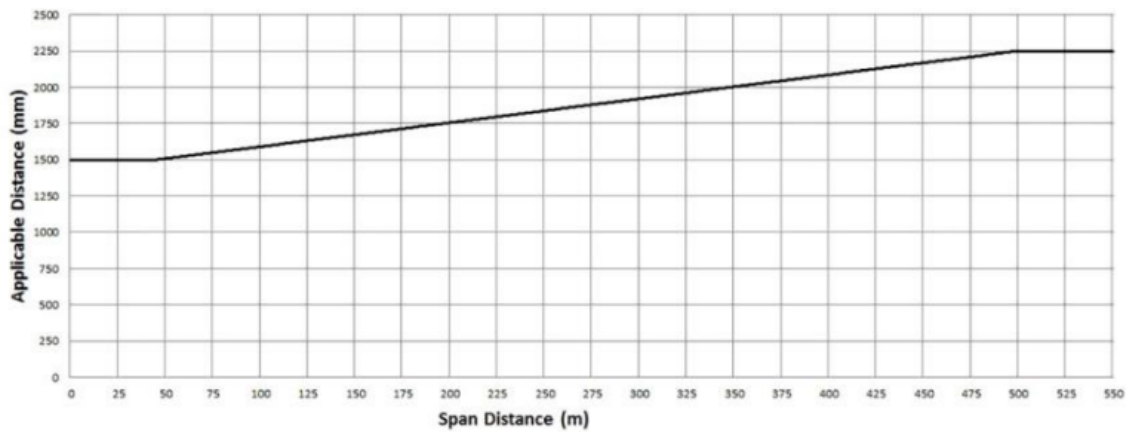
Clauses 3 and 27



Appendix 6: Applicable distance for middle two thirds of a span of an electric line – HBRA

GRAPH 5—UNINSULATED LOW VOLTAGE AND HIGH VOLTAGE ELECTRIC LINE (OTHER THAN A 66 000 VOLT ELECTRIC LINE) IN HAZARDOUS BUSHFIRE RISK AREA

Clauses 3 and 28



GRAPH 6—UNINSULATED 66 000 VOLT ELECTRIC LINE IN HAZARDOUS BUSHFIRE RISK AREA

Clauses 3 and 29

