

Post COVID Recovery Strategy: Key Projects 2020



Table of Contents

- Greater Dandenong: An Overview..... 3
- Mayor and Councillors 4
- Executive 4
- Access to Treasury Borrowing Rates 6
- City Aquatics and Wellbeing 9
- Community Revitalisation 14
- Dandenong Sports and Events Centre (DSEC)..... 16
- Keysborough South Community Hub 19
- Shepley Regional Multipurpose Centre 22
- Social and Affordable Housing in the City of Greater Dandenong..... 27
- Status Resolution Support Services 30
- Transport Infrastructure 33

Greater Dandenong: An Overview

The City of Greater Dandenong is a dynamic and progressive Council located approximately 35km south east of Melbourne's central business district. Financial backing from the State Government to support its Victoria-wide planning strategy marks the region as a key activity centre, and central Dandenong is fast becoming a residential city of national significance offering a flexible approach to development and providing high quality urban landscape.

Greater Dandenong's role in providing the employment, business, transport and education infrastructure for the south-east region of Melbourne will become even more important as the population of Melbourne's south-east expands significantly over the next 20 years.

The municipality has recently undergone a significant transition with a number of major projects either completed or underway. It boasts welcoming neighbourhoods and enjoyable leisure environments, based on strong partnerships and supported by well-planned, integrated and sustainable service networks.

The population is currently over 160,000, serving a regional catchment area with a projected growth of 21 per cent by 2030. Greater Dandenong is now the most multicultural municipality in Australia. Over half the city's residents were born overseas, 56 per cent from non-English speaking countries and representing 157 different nations. The city is a shining example of how harmony can exist in diversity and how that harmony, diversity and multi-culturalism are celebrated.

Council is working closely with all stakeholders, including the State and Federal Governments, local businesses, organisations and various government departments based in our city. Greater Dandenong is a great place to live, work, invest and raise a family; truly a *City of Opportunity*.

Mayor and Councillors

Cr Youhorn Chea
Lightwood Ward
0417 320 645
ychea@cgd.vic.gov.au

Cr Sean O'Reilly
Lightwood Ward
0422 523 258
sean.oreilly@cgd.vic.gov.au

Cr Loi Truong
Lightwood Ward
0466 004 618
loi.truong@cgd.vic.gov.au

Cr Peter Brown
Paperbark Ward
0468 584 837
peter.brown@cgd.vic.gov.au

Cr Tim Dark
Paperbark Ward
0466 403 914
tim.dark@cgd.vic.gov.au

Cr Sophaneth (Sophie) Tan
Paperbark Ward
0466 793 727
sophie.tan@cgd.vic.gov.au

Cr Jim Memeti (Mayor)
Red Gum Ward
0434 560 239
jim.memeti@cgd.vic.gov.au

Cr Matthew Kirwan
Red Gum Ward
0403 072 295
matthew.kirwan@cgd.vic.gov.au

Cr Angela Long
Red Gum Ward
0466 004 616
angela.long@cgd.vic.gov.au

Cr Zaynoun Melhem
Silverleaf Ward
0466 518 082
zaynoun.melhem@cgd.vic.gov.au

Cr Maria Sampey
Silverleaf Ward
0438 800 027
maria.sampey@cgd.vic.gov.au



Executive



John Bennie PSM
Chief Executive Officer
8571 5220
john.bennie@cgd.vic.gov.au



Mick Jaensch
Director Corporate Services
8571 5256
mick.jaensch@cgd.vic.gov.au



Jody Bosman
Director City Planning, Design and Amenity
8571 1468
jody.bosman@cgd.vic.gov.au



Martin Fidler
Director Community Services
8571 5211
martin.fidler@cgd.vic.gov.au



Paul Kearsley
Director Business, Engineering and Major Projects
8571 1571
paul.kearsley@cgd.vic.gov.au

Access to Treasury Borrowing Rates

Recently the Victorian Treasurer was quoted as saying that Local Government may have to access loan borrowings in order to support their communities both now and in the recovery efforts from the pandemic.

Unlike many Councils, the City of Greater Dandenong has frequently accessed loan borrowings in order to support the building of much needed new infrastructure within this municipality – and in doing so has created economic stimulus locally through the sourcing of much material for these projects from our region. The table below highlights the significant investments made by this Council over the past decade.

Project	Total cost (\$ million)	Loan funds used (\$ million)
Drum Theatre	13.0	9.0
Dandenong Market	26.0	20.0
Noble Park Aquatic Centre	21.0	5.0
Dandenong Civic Centre	65.5	47.2
Springvale Community Hub	52.6	20.0
Total	178.1	101.2

Whilst Council has a much higher base of loan indebtedness than other Councils, its financial position has been prudently managed and our loan ratios remain well below the maximum levels that were once set by Treasury for Councils. Council remains in a position where it is prepared to undertake further borrowings to build major infrastructure as part of the recovery efforts within this State. The ‘bang for buck’ can however be improved by State Government.

In 2019, Local Government Victoria announced the Community Infrastructure Loans Scheme (CILS) whereby Victorian Councils could access a pool of \$100M using State Treasury loan rates. The loan rates were extremely attractive and further came with the offer of a 50% subsidy for interest costs. The scheme was however ‘under-subscribed’ by Local Government due in the main to the prescriptive rules that surrounded the scheme with \$92.3M being drawn down.

In the case of Greater Dandenong, we were denied access to drawing down \$10M for the Springvale Community Hub (a \$52M project) because construction had commenced on the project – despite these borrowings not being required until June 2020. Council is further planning to borrow another \$30M over the two financial years 2022-23 and 2023-24 to complete a \$54M redevelopment of its Dandenong Oasis Aquatic Centre.

Under the rules of the previous CILS all sport and recreation projects including aquatic centres were excluded so as to not cut across what SRV have been doing with their Community Sports Infrastructure Loans Scheme. This is despite that fact that SRV grants amount to a maximum of \$1-2M and are largely irrelevant in terms of the funding packages needed for these large projects.

Council's current borrowing rate (based on a five-year fixed term loan) is approximately 1.8%. It would be expected that Treasury rates are likely to be closer to 1.0%. Should Council borrow \$30M at Treasury rates as compared to its own (over a 10 year period) the saving to Council would be in the order of \$1.3M in interest. Add a 50% subsidy of interest and this saving grows to around \$2.0M. All of these funds can then be re-invested into the Greater Dandenong community to provide support to its residents.

What we are seeking:

- For the State Government to re-institute the Community Infrastructure Loans Scheme with broader application criteria in order to create a stimulus for Councils to borrow funding at Treasury rates and generate local employment.

Contact details for further information:

Mick Jaensch
Director Corporate Services
8571 5256
Mick.Jaensch@cgd.vic.gov.au



City Aquatics and Wellbeing

The City's Aquatic Strategy provides a municipal-wide solution to aquatic facility provision and includes the following recommendations to get "more people, more active, more often".

1. Development of a new aquatic and wellbeing centre to replace the existing Dandenong Oasis; and
2. Redevelopment of the Noble Park Aquatic Centre (NPAC) to include an expanded range of year-round services.

1. Dandenong Aquatic and Wellbeing Centre

A new multi-purpose aquatic and wellbeing centre to replace the aging Dandenong Oasis with a focus on allied health, passive activity, education and wellness.

Background

Dandenong Oasis is over 40 years old and nearing the end of its service life.

The Centre has aging infrastructure with a limited range of facilities and is no longer meeting the needs of the community. This is evident from declining attendances and participation levels and escalating operational and maintenance costs.

The City's Aquatic Strategy (2019) recommends that Dandenong Oasis be replaced with a new aquatic centre that seeks to maximise community health and wellbeing benefits, in response to the high level of need within the Greater Dandenong community and broader south east region.

The proposed Centre will complement NPAC providing a municipal solution to aquatics provision.

Located within a Health Precinct

The new Centre will be developed in Mills Reserve, located on the corner Heatherton Rd and Cleeland St in Dandenong, and adjacent to the existing Dandenong Oasis (to be demolished).

Mills Reserve is perfectly situated within a medical, health and education precinct with

the Dandenong Hospital and Chisholm Institute both located in close proximity.

This location, together with the Centre's targeted focus on health and wellness presents an exciting opportunity to partner with specialist organisation/s that can 'add value' to the facility and associated programs and services.

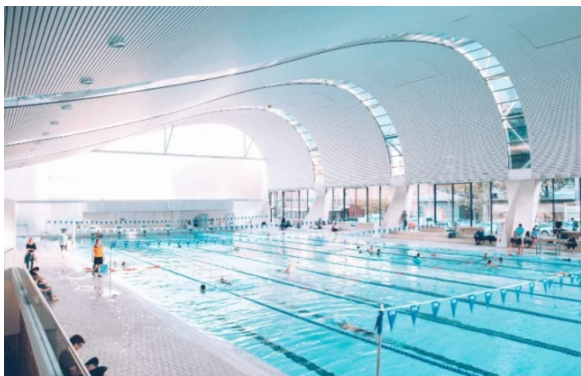
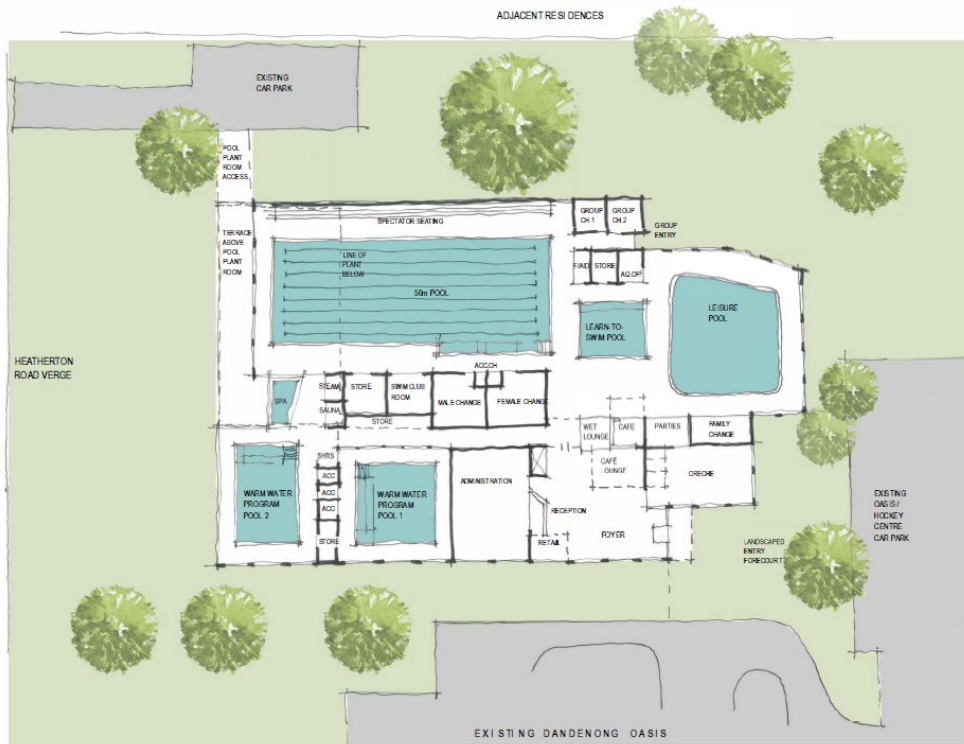
Project scope

New multi-purpose aquatic and leisure centre would consist of:

- Two warm water pools
- 50m pool with boom
- Learn to swim pool
- Leisure pool / water play
- Spa and sauna / steam
- Health and wellness gymnasium
- Program / group fitness rooms
- Café, creche and meeting room
- Administration, amenities etc.

Additional facilities (i.e. consulting suites) may also be provided in conjunction with potential project partners to further enhance the centre's focus on improving the health and wellbeing of the community.

Project cost: \$60 - \$65 million



What we are seeking:

- Major capital funding for the development of the Dandenong Aquatic and Wellbeing Centre.

Contact details for further information:

Paul Kearsley
 Director Business, Engineering and Major Projects
 Ph: 8571 1571
Paul.kearsley@cgd.vic.gov.au

2. Noble Park Aquatic Centre (NPAC) Redevelopment

To redevelop NPAC to include an expanded range of year-round services, to maximise use and further develop as a family friendly facility – focusing on leisure, recreation and fitness, sport-based usage and summer activities.

Background

NPAC is located in Memorial Drive, Noble Park within Ross Reserve – a major sport and recreation precinct.

Existing facilities include an outdoor 50m pool, leisure pool / waterslide and water play area and small indoor program pool, program rooms, café and amenities.

NPAC is in very good condition but is severely underutilised and requires a high operational subsidy from Council. This is primarily due to the limited range of facilities and year-round access by the community.

NPAC has significant capacity for increased use, particularly due to its location in the population centre of Greater Dandenong, proximity to public transport and future growth areas.

Project scope

- Expanded indoor pool hall to include:
 - Dedicated learn to swim pool
 - Leisure pool / children's water play
 - Expanded program pool
 - Spa and sauna / steam
- Health and wellness gymnasium
- Enhanced accessible change rooms

Retention of outdoor 50m pool and water slide for competitions, carnivals and summertime recreational usage.

Proposed outcome

The NPAC redevelopment will have a positive and significant impact on

participation and visitation levels, community health and wellbeing and the operational performance and sustainability of the Centre.

Annual visitations are estimated to increase by over 110% and visits per head of population are expected to double as a result of additional facilities and services.

Staged Development

The NPAC redevelopment can be delivered in stages, and Council has undertaken detailed planning into the potential delivery of the health and wellbeing gymnasium component as 'Stage 1' of the centre redevelopment.

Scope of works:

- Gymnasium (600 sqm)
- Program / group training rooms (x3)
- Dedicated female, male and accessible change areas
- Members lounge, offices and storage
- Provision for 24/7 operation

The proposed Stage 1 redevelopment is projected to increase annual visitations from 200K currently to 409K by year 5.

Project cost:

Total project:

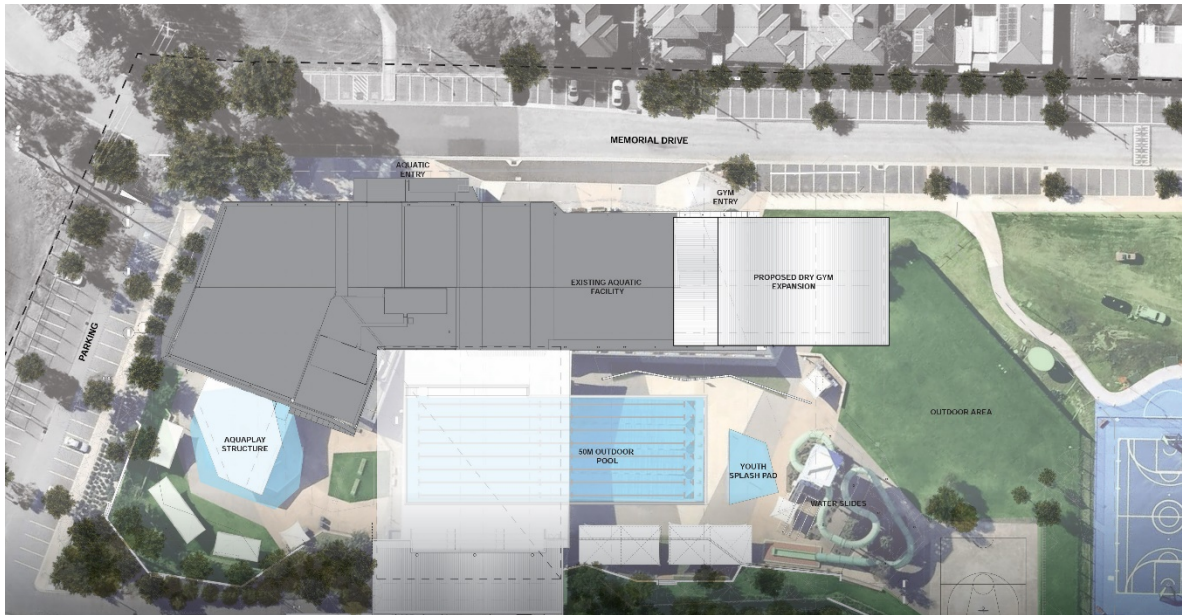
- **\$21 million**

Stage 1 - Health & Wellbeing Gymnasium:

- **\$6.6 million**

Contact details for further information:

Paul Kearsley
Director Business, Engineering and Major Projects
Ph: 8571 1571
Paul.kearsley@cgd.vic.gov.au



What we are seeking:

- Funding of \$14.5 million for the NPAC Stage 2 Redevelopment



Community Revitalisation

Introduction

Council has been funded by the State Government (through DJPR) over the past three years to undertake the Community Revitalisation (CR) Project, with Council also contributing over the past year.

Taking a place-based approach, the aim of the project has been to assist our most disadvantaged jobseekers to take advantage of the jobs-rich community in which they live.

The project has undertaken a range of innovative approaches to building the employment capability of the jobseekers and the awareness of the employers of the untapped potential of this cohort.

Background

The project was informed by the research conducted by TACSI for the RDA Southern Region looking at the factors that contribute to the level of disadvantaged in the south east region of Melbourne. Council's One Percent project also provided an evidence base for the need to take a new and different approach to addressing the high level of unemployment in this region.

Evidence for continuance

Both the research and the live data obtained during the course of this project indicate that to have a long-term impact, there is a need for not only a place-based approach, but also a highly individualised tailored service to ensure optimum outcomes are achieved. Our data clearly demonstrates that the degree of engagement and intervention correlates to the employment outcomes.

Having undertaken a number of initiatives in the first two years of the project, we have continued to leverage the learnings and embed the implementation of those most effective – both with jobseekers and with employers – and inform other stakeholders for their development. With a plethora of services and organisations to support jobseekers in the region, there is a need for an independent body to act as the connector to programs / organisations providing work preparation and referral to support agencies, as well as providing opportunities for jobseekers to address identified gaps in work readiness beyond resumes and interview training. Council has played this role through the Greater Dandenong Regional Employment Taskforce throughout the course of this project.

Implementing learnings over the past year has not only resulted in an increase in the uptake of selected initiatives as anticipated, but has also informed new initiatives to be developed. With the significant increase in unemployment for the foreseeable future which will impact considerably on those already experiencing disadvantage, it is essential that we continue with this project to both enable 'best practice' activities to become embedded across a number of organisations – and scalable across regions. Minimising the impact on our most vulnerable and changing the employment landscape is the primary aim.

Timeline

The current funding agreement with the State Government is due to expire on 30 June 2020.

What we are seeking:

- Grant funding of \$500,000 over a two year period.

Contact details for further information:

Paul Kearsley
Director Business, Engineering and Major Projects
8571 1571 Paul.kearsley@cgd.vic.gov.au

Dandenong Sports and Events Centre (DSEC)

A multipurpose sport, community, cultural and entertainment venue in the heart of Melbourne's south-east catering for elite sporting competitions, major events, concerts, festivals, community events and corporate functions. The boutique rectangular stadium would address a gap in the provision of stadia and top-tier professional teams in South East Melbourne. It would also provide a major event and function centre catering for the region's large and rapidly growing population.

The Site

Cheltenham Road, Dandenong, adjacent to the Dandenong Train Station which provides direct public transport links to and from Melbourne along the heavily-populated Cranbourne, Pakenham and Traralgon train lines, as well as 23 metro and five regional bus routes.

Opportunities

SPORT

- a home ground for a South East Melbourne-based professional men's and women's football (soccer) club.
- a venue for one-off regular season and pre-season Melbourne Storm (NRL, NRLW) and Melbourne Rebels (Super Rugby, Super W) matches.
- an appropriate venue to house finals matches and special events for South East Melbourne community football, rugby league, rugby union and gridiron clubs / competitions.

ENTERTAINMENT

- a base for major concerts, multicultural festivals, family and community events.

FUNCTION AND OFFICE SPACE

- a function space (approx. 450 capacity) appropriate for major conferences, exhibitions, jobs fairs, community events, weddings and school functions.
- for possible integration of university programs and commercial or government office space.
- a space for a Community Centre.



Project Cost

Approx. \$100 million for Stage 1

Revitalising Central Dandenong

A 2019 University of Melbourne / Australian National University study revealed the need for a “catalyst project” or projects to re-energise the State Government-backed Revitalising Central Dandenong concept.

With its close proximity to the Dandenong CBD and train station, as well as several significant Development Victoria land parcels, the DSEC would have a transformative effect on Dandenong, sparking a fresh wave of private investment into the city as well as providing a boon for existing businesses, particularly hospitality and retail. The DSEC would create a Docklands-style precinct development opportunity for Dandenong.

Regional Benefit

Any professional football club based out of the DSEC would have its training and administration headquarters at Casey Fields in Cranbourne East, which encourages additional investment in the City of Casey and provides a club to represent the entire south-east region.

The central location of the DSEC provides an easily accessible venue for residents across South East Melbourne and Gippsland to attend elite sporting matches and major entertainment events, removing a major travel (and cost) burden that currently exists for Melbourne-based venues.



What we are seeking:

- Funding of a Business case of \$500k
- Major capital funding for the detailed planning and development of the DSEC.

Contact details for further information:

Paul Kearsley
Director Business, Engineering and Major Projects
Ph: 8571 1571
Paul.kearsley@cgd.vic.gov.au



Keysborough South Community Hub

The Keysborough South Community Hub will be a multi-purpose facility providing a range of services, programs and flexible meeting spaces for the community.

Introduction

Keysborough South has experienced significant housing development and population growth over recent years, having increased from 5,516 residents in 2012 to 11,838 in 2019.

This surge in population has led to a significant increase in the demand for community services, in particular early years' children's services.

These services, in addition to a range of multi-purpose meeting rooms and spaces will be provided at the Hub, providing opportunities for a variety of activities and programs to be offered for the community.

Background

Research and consultation undertaken by Council between 2013 and 2015 identified the need for increased community services in Keysborough South.

Preliminary concept plans prepared in 2015 received a high level of community endorsement, however further planning was required to secure an appropriate site.

Despite original plans to co-locate the Hub with the new primary school, insufficient land availability led Council to explore a range of other site options, before selecting the ultimate location for the Hub.

Site

The community hub will be located on the corner of Chapel Road and Villiers Road in Keysborough South, approximately 1.2km from the new Keysborough Gardens Primary School.

This land is owned by Council and forms part of the Tatterson Park precinct.

Facility Scope

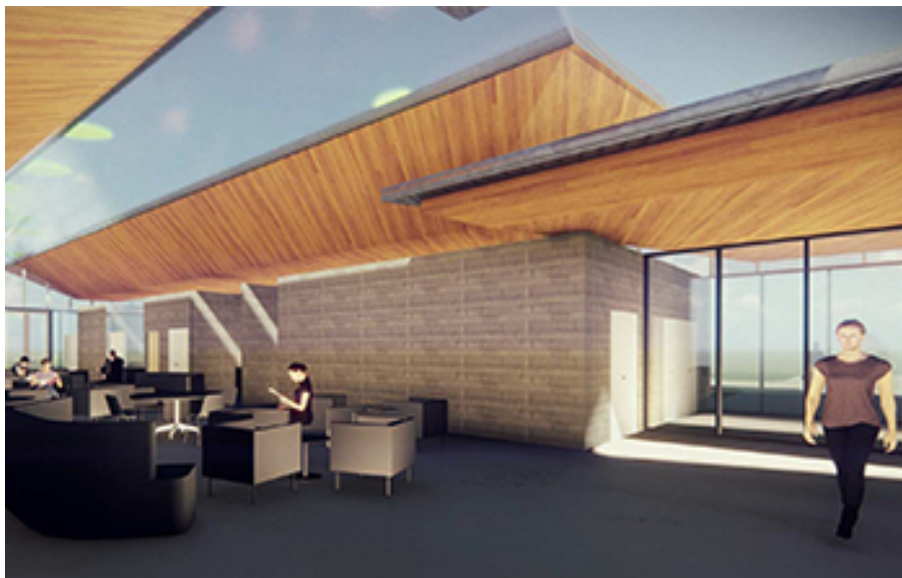
- Kindergarten rooms x 2 (66 licenced places)
- Long day care rooms x 2 (57 licenced places)
- Consulting suites for MCH and specialist services
- Community meeting rooms
- Community lounge
- Community kitchen
- Reception and administration
- Amenities
- Landscaping and external play spaces
- Car parking

Project Cost

Approximately \$15 million

Current Status

The detail design of the community hub is underway and will be completed by mid-2020, ready for tender and construction by the end of the year – pending funding.



What we are seeking:

- Major capital funding of the Keysborough South Community Hub

Contact details for further information:

Paul Kearsley
Director Business, Engineering and Major Projects
Ph: 8571 1571
Paul.kearsley@cgd.vic.gov.au



Shepley Regional Multipurpose Centre

Introduction

Shepley Oval is a regional sports facility located in Dandenong – a destination suburb in Melbourne’s south east. The oval is currently used for Cricket and Australian Rules Football. To ensure Shepley Oval’s relevance and future longevity Council is currently advocating for funding to build a Regional Multipurpose Centre on the site. The centre will cater for hosting business forums and promoting local employment opportunities as well as support to sporting clubs to access the south-east region of Melbourne, while continuing to provide an operating base for Cricket Victoria, Dandenong District Cricket Association, Dandenong Cricket Club and the Dandenong Southern Stingrays Football Club.

Key Features of the Centre include:

- Multipurpose indoor training space, which can be converted into a six lane cricket net facility.
- Multipurpose space for community use.
- Multipurpose space to host industry forums to promote local employment and to profile the region’s manufacturing and industrial sectors
- Six unisex change rooms with adjoining showers and toilets.
- Referees unisex change room with adjoining showers and toilets.
- Kiosk.
- Male, female and accessible public toilets.
- Administration ‘hot desk’ space for State, sporting and community group use.
- Two meeting rooms.
- New accessible grandstand for Shepley Oval.
- Environmental standard design – 5-star or equivalent.

Background

The perceived need for a community accessible multipurpose indoor training centre (MPITC) at Shepley Oval, Dandenong Park was first identified by

Dandenong Cricket Club and Dandenong District Cricket Association in 2009.

Need and demand for the new facility has been assessed through consultation with a broad range of regional community sporting clubs, relevant community groups, Victorian peak sporting bodies and Sport and Recreation Victoria.

The Make Your Move Greater Dandenong Physical Activity Strategy identified that the level in participation in physical activity by Greater Dandenong residents is significantly lower than the Victorian average with 49% and 73% respectively. In addition, the prevalence of diabetes (type 2) is 36% higher in the municipality than the Victorian average of 9%. This facility will provide much needed infrastructure for residents to participate in physical activity opportunities to improve these statistics.

Targeted stakeholder consultation has been undertaken with over 27 sporting clubs and State Sporting Associations who identified demand for the new facilities. An online survey was undertaken with community sporting clubs in Greater Dandenong and 17 clubs with over 2000 current participants responded.

Meetings and workshops were held with Cricket Victoria, AFL Victoria Southern Metro, Dandenong Premier Men’s and Women’s Cricket Club, Dandenong Stingrays Football Club, St Kilda Football

Club, Australian Futsal and Hockey Victoria.

Cricket Victoria is strongly interested in utilising the facility and view the facility as a regional/metropolitan hub. They have indicated that they would hope to base regional Cricket Victoria staff at the venue. In addition, they would like to conduct various participation and sports development programs, including multicultural (Harmony) programs, school and community offerings, and conduct training and coaching seminars from the facility.

AFL Victoria has indicated they would like to deliver school and community programs, sports development and training seminars from the facility. They have also advised that the St Kilda Football Club will be interested in delivering programs from the venue.

Council's Sport and Active Recreation Strategy, Activate 2014-2019 also identifies the need for a regional indoor training facility.



Current demand for indoor multi-purpose space

An assessment of need and demand established the following:

- Regional and community sporting clubs have indicated that the provision of appropriate new training facilities will play a key role in enabling sports participation growth in Greater Dandenong by providing greater access to all-weather day and night facilities.
- The availability of the facility on a year-round basis will maximise opportunities to increase participation across a number of sports.
- Dandenong Cricket Club (Men's and Women's), both of which have Premier teams competing at the top level of Victorian cricket, have demonstrated a strong interest in the development of an indoor facility to enable year round training and expanded delivery of development programs that have high potential to increase participation in the region from junior levels upwards.
- The lack of access to indoor training facilities is currently restricting program delivery by one of the region's largest sporting entities, the Dandenong Stingrays Football Club, whose extensive activities include development and inclusion programs from junior to elite levels and encompassing girl's and women's, multicultural and indigenous football development.
- Melbourne Football Club has partnered with the Stingrays for the delivery of multicultural participation and talent development programs and have indicated their need and desire to use the new facility. The Centre will also assist in facility provision for a female AFL academy, state level events and programs with the potential for significant visitor economy benefit.
- The multipurpose facility will be designed to provide use by futsal, hockey and other community sports. It will also provide administrative offices for the Dandenong District Cricket Association and Indoor Sports Victoria.
- Greater Dandenong has a significant sub-continent community with a strong interest in cricket. This facility will provide further opportunity to deliver structured programs and cricketing opportunities, which will help satisfy the current year round demand from Sri Lankan, Indian and Pakistani residents of the city.
- Additional programming opportunities for schools and for the large refugee and asylum seeker community in the area may be afforded by the new facility.

Timeline

Schematic and detailed design and documentation to be completed in 2019-20, with construction proposed to commence in 2020-21, dependent on funding. An option to stage the construction of the new Centre is also being considered subject to available funding.

What we are seeking:

- Capital grant funding assistance with a total project cost of \$13 million for the development of the Shepley Regional Multipurpose Centre.

Contact details for further information:

Martin Fidler
Director Community Services
8571 5211
martin.fidler@cqd.vic.gov.au



Social and Affordable Housing in the City of Greater Dandenong

Introduction

The City of Greater Dandenong is the most multicultural and diverse municipality in Australia with residents from 157 birthplaces and 64 per cent of its 169,000 population born overseas. Over 200 languages and dialects are spoken within the municipality with languages other than English spoken by over two-thirds (70 per cent) of its residents – the highest level in Victoria. A significant portion of the residents are recent migrants, refugees and people seeking asylum.

Homelessness in Greater Dandenong is different to the homelessness witnessed in Melbourne's Central Business District (CBD), inner cities or along coastal suburbs. This is because Greater Dandenong is a community of marked cultural diversity and ongoing migrant settlement which faces the challenges of low-income levels, high unemployment, unfavourable educational outcomes, a substantial rate of refugee settlement, lower levels of mental and physical health than the Victorian average, and elevated crime rates.

The population cohorts most at risk of homelessness in Australia have been identified as disengaged youth, recent migrants including refugees and people seeking asylum, single-parent households, people living in rent-related poverty, Aboriginal and Torres Strait Islander people, women over the age of 55, unemployed residents and low-income households, women and children escaping family violence, LGBTIQ young people, people with disabilities, people with mental health problems, and older people living on a pension.

These population cohorts, with or without intersectional disadvantages, account for approximately two-fifths of Greater Dandenong's population. Their circumstances place many at risk of housing-related financial stress or homelessness. The information presented below describes the scale and nature of homelessness in this community.

Background

Greater Dandenong has the highest rate of homelessness in Victoria. On Census night in 2016, 1942 people were found to be sleeping rough or in temporary accommodations and an additional 5700 people were living in overcrowded conditions. However, Greater Dandenong ranks 23 in the ratio of social housing provision. Since 2001, housing affordability in Greater Dandenong has dropped by 78 per cent, from 83.5 per cent to only 4.9 per cent of rental properties being affordable in 2019 to recipients of Centrelink benefits. These factors contribute to Greater Dandenong being second in Victoria for rent related poverty. This poverty has led to a 28.2 per cent increase of homeless people between 2011 and 2016. There are currently over 5000 people from this region on the waiting list of the Victorian Public Housing Register. Despite having the third highest unmet demand for crisis accommodation for women and children escaping domestic violence in Australia (353 women turned away each year), there are only eight safe and secure residential units dedicated to crisis accommodation.

Council's *Housing Strategy 2014-2024* has identified multiple strategies to increase the supply of social and affordable housing in the municipality.

- Advocacy with the Federal and State Governments to make available land and funds to develop social housing demonstration projects, partnering with a social housing provider.
- Consider options of using Council land to develop different social and affordable housing projects in partnership with social and affordable housing service providers.
- Consider options for short-term modular housing developments in partnership with relevant agencies.
- Investigate clear priorities and determine the preferred structure for the management of the established Housing Development Fund.
- Assist service providers to increase the number of crisis and emergency accommodations across different at-risk cohorts.
- Assist service providers to apply for Federal and State government grants and funds.

Since 2019, Greater Dandenong Council has proactively worked with residents to activate private rentals in the municipality for social housing. Through this initiative, Council has activated six private rentals as transitional accommodation for women and children escaping domestic violence in partnership with Wayss, the regional service provider of family and domestic violence services for this region. More homeowners in the municipality are engaging with service providers to activate private rentals for social and affordable housing.

What we are seeking:

- Investment by Federal and State Governments in Social and Affordable Housing in the City of Greater Dandenong through contribution of land and funds.

Contact details for further information:

Martin Fidler
Director Community Services
8571 5211
martin.fidler@cgd.vic.gov.au



Status Resolution Support Services

Introduction

The Federal Government cuts to the Status Resolution Support Services program came into effect in 2018. The change in eligibility to its SRSS program has meant that an increasing number of people seeking asylum are no longer eligible to receive payments.

In response to the drastic cuts, Greater Dandenong Council established the Local Government Mayoral Taskforce Supporting People Seeking Asylum, a coalition of councils banding together to advocate the Federal Government to reverse its cuts or provide a safety net for those affected.

The Taskforce is now made up of 32 councils nationwide and launched the Back Your Neighbour campaign in December 2018. The campaign seeks to mobilise community support to influence federal and state policies around the support for people living in the Australian community awaiting refugee determination.

Background

People seeking asylum often require support, while they wait for their claims for protection to be processed. Financial insecurity is a serious concern for many, as they may experience difficulty finding work because of their lack of permanent status and are not entitled to the social security payments available to others. The precariousness of short-term work also contributes to financial insecurity.

The SRSS program has provided support in recent years for people seeking asylum. The program provides a basic living allowance (typically 89 per cent of JobSeeker allowance, or approximately \$250 per week), casework support and access to torture and trauma support.

Eligibility to the SRSS program has been tightened by the Federal Government, very few people will fit the restrictive criteria. According to the Refugee Council of Australia, this has seen a reduction of the current program by over 60 per cent. This translates to over 7,000 vulnerable people losing access to basic income assistance, a caseworker and torture and trauma counselling. Thousands more will not be able to access this life-saving support if they need it again (for example, if they lose their jobs).

This cost shifting has meant that State and local governments are left to pick up the pieces and respond to the additional demand for crisis support, with many aid organisations becoming overstretched in their ability to provide appropriate levels of support.

The impact that the SRSS cuts are having on people seeking asylum is now being further compounded by the COVID-19 pandemic, where job security and the ability to remain healthy and safe have deteriorated.

What we are seeking from the Federal Government:

- Immediate action to reinstate the SRSS program to its previous level of support, or to provide for a liveable safety net for those awaiting the decision on their claim for asylum.
- Immediate action to provide adequate resources to fairly expedite the 'legacy caseload' of people seeking asylum so that their status is fully resolved.

What we are seeking from State and Territory Governments:

- That State and Territory Governments follow suit with Victorian and Queensland Governments in providing interim funding to local services who are supporting individuals and families put at risk by SRSS cuts.

Contact details for further information:

Martin Fidler
Director Community Services
8571 5211
martin.fidler@cgd.vic.gov.au



Transport Infrastructure

Addressing shortfalls in transport infrastructure impacting the regional economy & community

The following projects fall under three themes:

- Supporting the role of Greater Dandenong as a major employment hub, manufacturing centre, generator of exports and distribution hub
- Improving public transport facilities that are not compliant with DDA (Disability Discrimination Act) standards
- Extending and upgrading shared user path networks to improve access to employment and recreation

Theme 1 - Dandenong as a major employment hub

Greater Dandenong is home to the Dandenong National Employment and Innovation Cluster (NEIC) which includes the Dandenong Metropolitan Activity Centre and Dandenong South State Significant Industrial Precinct (SSIP).

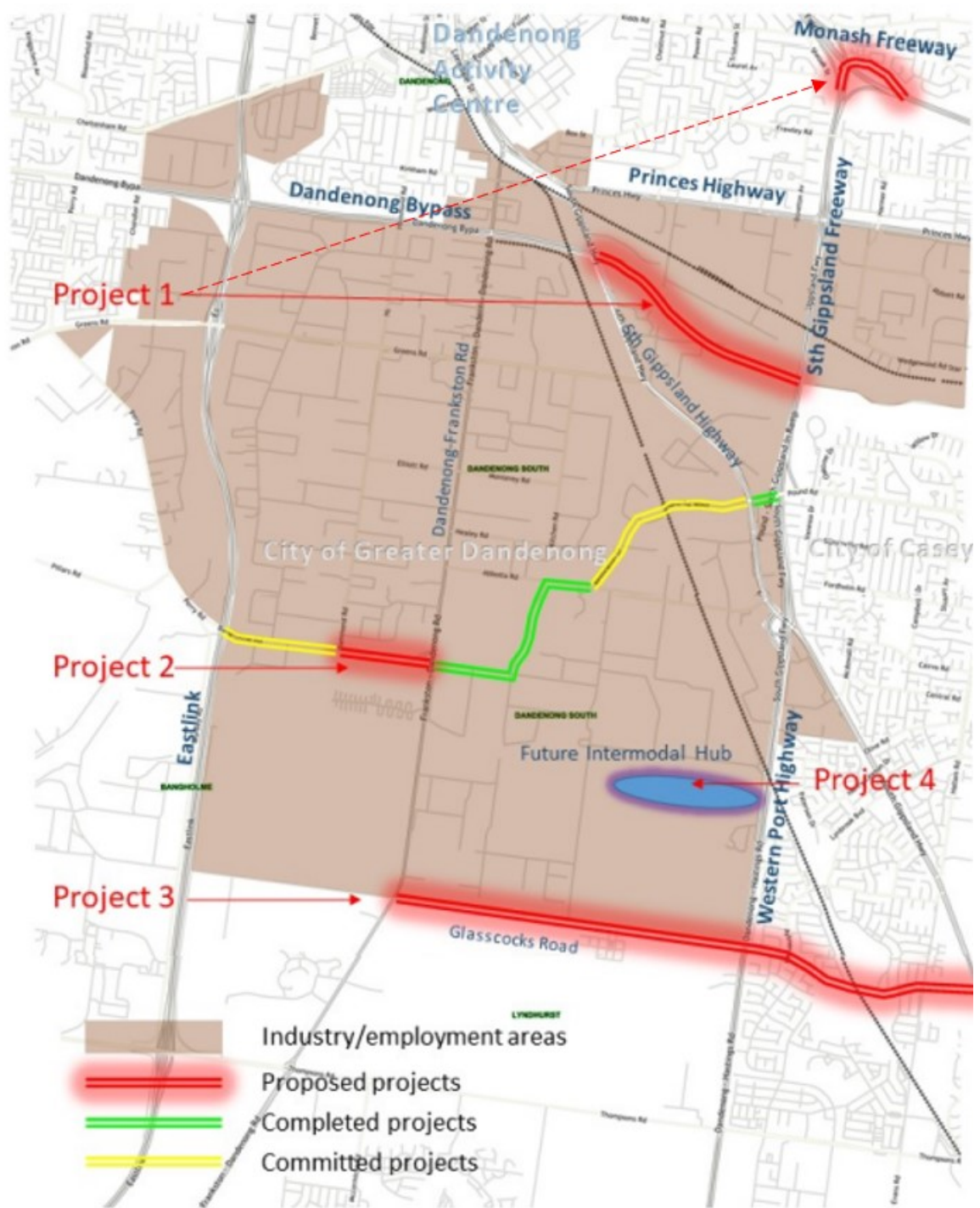
Dandenong South has major manufacturing, warehousing /distribution and is an employment powerhouse in providing a vital source of jobs for the abutting and fast-growing south-east growth area. These include very large industries such as Bombardier, Volgren, Iveco, Visy, Nissan, Kraft, Pilkington and Jayco as well as numerous warehousing/distribution companies such as Woolworths, Aldi, Amazon and Bunnings.

While Dandenong South has a surrounding freeway and arterial road network that provides access to the Port of Melbourne and the broader metropolitan area, it is constrained by a range of “last mile” transport infrastructure shortfalls. These include:

- Poor internal east west access which restricts economic activity and access to jobs and services.
- Poor access to the adjoining residential growth areas which have a net shortage of jobs. This adversely impacts outcomes for the region’s liveability and social inclusion, effectively locking out a proportion of the potential workforce.
- Increasing peak-hour congestion caused by gaps in the surrounding arterial road network.

Council’s Transport Plan proposes a range of infrastructure projects to address existing problems and build for the future. Many of these are critical to ensure the NEIC SSIP fulfils its ongoing role as an employment and economic powerhouse however are well beyond Council’ capacity to fund.

The following four transport projects have potential to unlock the productivity and increase the resilience of this area and the liveability of the adjoining residential growth area by moving people and freight around more quickly, more safely and more efficiently. These projects are shown in the diagram below and listed below that.



Dandenong South National Employment & Innovation Cluster

Project 1 – Complete the Dandenong Bypass

This completed arterial will connect the eastern end of the existing Dandenong Bypass at the South Gippsland Highway with the South Gippsland Freeway. It will:

- provide a direct east west link between the South Gippsland Freeway/Western Port Highway easing pressure on the congested South Gippsland Highway and surrounding access roads
- help separate traffic which does not have a destination in the NEIC from that which does
- finalise the Bypass of the Dandenong Activity Centre
- support the development of Noble Park and Springvale Activity Centres as 20-minute neighbourhoods.

When in combination with a right-hand turn interchange between the South Gippsland Freeway and Monash Freeway, this project will provide an overall high capacity network capable of moving all forms of traffic across this part of the region.

Indicative Cost: \$265 million.

Project 2 – Complete the missing internal ‘last mile’ east west route

This project comprises principally a bridge over the Eumemmerring Creek, construction of a short extension of Bangholme Road and intersection treatment at Frankston-Dandenong Road.

It completes a continuous link through the heart of the industrial precinct to provide swift access for freight and the local workforce. It accesses the South Gippsland Freeway through a chain of arterial roads with potential for a longer-term connection with EastLink.

Key lengths of this route have already been completed or have been committed to be built within two years. The accompanying figure shows those parts of the link that have been completed, committed and yet to be constructed. Completion of the outstanding components will:

- significantly improve connectivity and access to existing businesses
- lift productivity and help drive economic growth
- increase the legibility of the precinct for those accessing the area
- increase transport network resilience.

Indicative Cost: \$38 million (one lane in each direction – does not include EastLink ramps)

Project 3 – Build Glasscocks Road

Glasscocks Road is planned as a major east west arterial linking the Casey growth area to employment and other opportunities. It also directly serves the developing areas in Lyndhurst which are part of the NEIC. It is a vital component of the South East Growth Area Plan.

Funding will eventually be available to develop parts of this road abutting the NEIC through a Development Contributions Plan. At this point in time there are only limited funds available to construct Glasscocks Road.

Construction of Glasscocks Road will have the following benefits:

- substantially upgrade east west access for residents and workers with a destination in Dandenong South and beyond
- significantly improve freight access to the NEIC from the surrounding arterial and freeway network and help encourage investment, productivity and drive economic growth
- significantly improve network resilience by reducing length of large detours during arterial network disturbances.

Indicative Cost: Realistic delivery costs in phases are as follows:

Phase	Road Segment	Estimated Budget
1	Frankston Dandenong Rd to Westernport Hwy - one lane each way	\$ 60M
2	Section within City of Casey	\$118M
3	Duplication Frankston Dandenong Rd to Westernport Hwy (<i>predicated on completion of Phase 1</i>)	\$ 42M

What we are seeking

- Support from the Federal Government to help fund the transport infrastructure as outlined above to underpin both metropolitan, regional and 'last mile' projects within Dandenong South.

Theme 2- Upgrade public transport facilities that are not DDA compliant and support bicycle use

Greater Dandenong is home to five railway stations on the busy Dandenong rail line. Upgraded services are being progressively implemented along this line with newer high capacity trains planned to be rolled out this year along with increased services. While Springvale, Noble Park and Dandenong stations have seen upgrades in recent years, Yarraman and Sandown Park are much older style stations that lack many of the modern facilities enjoyed by other stations.

In particular, Yarraman is not DDA compliant.

The platforms at Yarraman Station, can only be accessed via pedestrian footbridges that cross over the station. These footbridges are not DDA compliant as they have steep ramp grades without intermittent level landings. This makes their use unsafe, particularly for individuals with a disability. This station must be made DDA compliant by 31 December 2022.

In addition to these shortfalls there is currently no secure bicycle parking at Yarraman Station. This discourages cycling and increases reliance on the limited car parking at Yarraman and other nearby stations.

The Victoria Cycling Strategy 2018-28 identifies the need to integrate cycling and public transport.

Indicative Cost: \$10k for cycle parking and \$1.8 million for DDA compliant ramps

What we are seeking

- Support to help fund the transport infrastructure as outlined above i.e.
 - Upgrade ramps at Yarraman Station so that they are DDA compliant.
 - Provide secure bicycle parking & Parkiteer at Yarraman Station.

Theme 3 - Extending and upgrading shared user networks

The City of Greater Dandenong has a bicycle network of 98 kilometres of off and on-road cycling paths including the EastLink and Dandenong Creek trails.

This bicycle network provides a number of benefits to the community and the region including:

- an alternate and very affordable form of transport for commuters
- reduced reliance on access to a private vehicle
- links between neighbourhoods, suburbs and destinations of interest including jobs and services
- an opportunity to create a healthier lifestyle through physical exercise
- opportunities to access and enjoy a range of natural environments
- increased transport resilience.

Despite this extensive network there are a number of locations where there are major deficiencies or where opportunities exist to extend and upgrade facilities.

Three significant network upgrades are proposed.

Project 1 - Continuation of the Djerring Trail shared user path to Dandenong

As part of the level crossing removal project along the Dandenong railway line the Victorian Government has completed a premium-grade shared user path between Caulfield and Yarraman stations. The shared user path caters for both commuter and recreation cyclists as well as pedestrians.

However, the 2km leg from Yarraman Station to the Dandenong Station and Dandenong Metropolitan Activity Centre has not been constructed. Consequently, this relatively short section of the extensive Djerring Trail is a missing link between Caulfield and the south eastern suburbs.

Council has developed a design plan that demonstrates how this link can be developed in a practical manner.

Indicative Cost: \$3.8 million

Project 2 - Construction of a strategic cycling corridor as part of the Cranbourne rail duplication project

The Victorian Government is currently duplicating eight kilometres of single track from Dandenong to Cranbourne paving the way for trains every ten minutes on the Cranbourne Line.

Track duplication works will kick off in 2020 and finish in 2022.

As part of this project funds from the Growth Areas Infrastructure Contribution (GAIC) Fund have been allocated to construct a shared user path (SUP) alongside the upgraded rail line in the City of Casey between Western Port Highway and Cranbourne. This forms a section of the state Strategic Cycling Corridor between Dandenong and Cranbourne activity centres.

Despite “in principle” funding support for the SUP by the Victorian Government, the terms of the GAIC funding does not extend into Greater Dandenong (which is outside the Growth Area). Consequently, there is a shortfall in funding to build this strategic cycling corridor shared user path beyond the Growth Area (Western Port Highway) and Dandenong Activity Centre, a distance of around 7 kilometres.

Construction of the Greater Dandenong component would provide the opportunity to connect nearby residential areas with the significant employment locations available within the Dandenong South Industrial Precinct and Dandenong Activity Centre as well as providing recreational opportunities.

Not delivering this SUP during the Cranbourne Line Upgrade works will result in significant direct and indirect costs due to additional rail disruptions.

The section of trail between Greens Road and National Drive could be undertaken as part of the Cranbourne Line Upgrade if funding was available. This would immediately leverage off the Pound Road West upgrade (by 2022) connecting residents to the employment area from Hampton Park, Narre Warren and Berwick via Pound Road SUP and the Hallam Valley Trail. It would also allow for municipal paths to be considered for construction to further distribute commuters via active transport throughout the greater employment area.

The remaining sections along this corridor require further consideration and design. With funding, this could also be undertaken within 12 months, minimising construction costs and rail disruptions.

Upgrade Indicative Cost: \$6.7 million to construct SUP between Greens Road and National Drive and \$1 million to design remainder of the SUP.

Project 3- EastLink Trail bridge over the rail line

The EastLink Trail is a popular recreational strategic cycling corridor which connects Carrum to Ringwood and beyond. The trail is severely interrupted by the Dandenong rail line at Railway Parade and Greaves Reserve, Noble Park and presents a major inconvenience to users. As a consequence:

- cyclists must tackle a circuitous 400m detour via a non-DDA compliant route across the rail corridor
- there is conflict between trail users and rail passengers within the station using the same route.

To overcome these barriers there is a need to construct a new dedicated bridge over the rail line adjacent to EastLink to make the trail more direct, convenient and safer for trail users, whilst reducing barriers to walking and cycling.




Indicative Cost: \$3.1 million



What we are seeking

- Support to help fund the extension of planned shared user paths that have a benefit for commuters and recreational users i.e.
 - Extension of the Djerring Trail between Yarraman and Dandenong
 - Continuance of the planned Cranbourne rail corridor path between the growth area, Dandenong South Industrial Area and Dandenong Activity Centre.
 - EastLink Trail bridge

Contact details for further information:

Paul Kearsley
Director Business, Engineering and Major Projects
8571 1571
Paul.kearsley@cgd.vic.gov.au

 Phone **8571 1000**
 Fax **8571 5196**
 council@cgd.vic.gov.au

 **NATIONAL RELAY SERVICE**
TTY: 133 677
Speak and listen: 1300 555 727
Online: relayservice.gov.au
 TIS: 13 14 50

Find us online 
greaterdandenong.com
   