

ACDC Guide for Developers and Consultants

Last edited September 2020

Contents

ACDC definitions:	2
ACDC Quick start:	3
ACDC Pre-requisites:	3
ACDC Workflow:.....	4
Steps to creating an ACDC Drawing:.....	4
ACDC Drawing Capture	4
ACDC Portal Submission:.....	5
Downloading and Resolving a Failed drawing	6
ACDC Portal: Other sections of the website:	8
Sections of the dashboard:	8
Reports (developer admins only).....	9
Developer responsibilities:	10
Common issues:	11

ACDC definitions:

ACDC: As Constructed Design Certification portal is an online website available for the easy validation of spatial and non-spatial (attributes) asset data against a customer’s chosen specification.

Customer: An organisation, such as a council or utility, which creates projects and assigns them to Developers. E.g. City of Greater Dandenong

Developer: An organisation, such as a developer, consultant or surveyor, who submits drawings (for projects created by a Customer) to be validated on ACDC. For instance, Alexander Symonds Surveyors.

ACDC Quick start:

Website: <https://asconstructed.com>

A login can be set up by the Admin user of your organisation. If you are unsure of who this is or you need to create a new account, select Request new account from the login page of asconstructed.com:

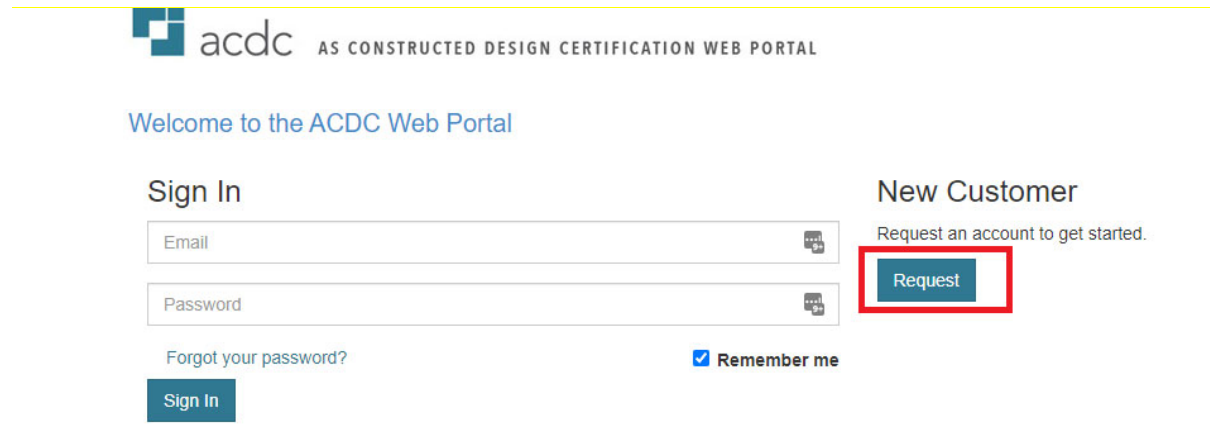


Figure 1: Requesting a new ACDC account

ACDC Pre-requisites:

- Autodesk AutoCAD licence minimum of AutoCAD LT
- Use ACDC AutoCAD A-Spec template provided by City of Greater Dandenong (available via Documents section on the ACDC portal)
- Use AutoCAD A-Spec menu provided by City of Greater Dandenong (available via Documents section on the ACDC portal)
 - To load the menu: type “Menuload” in the command line and browse to the CUIX menu file provided

ACDC Workflow:

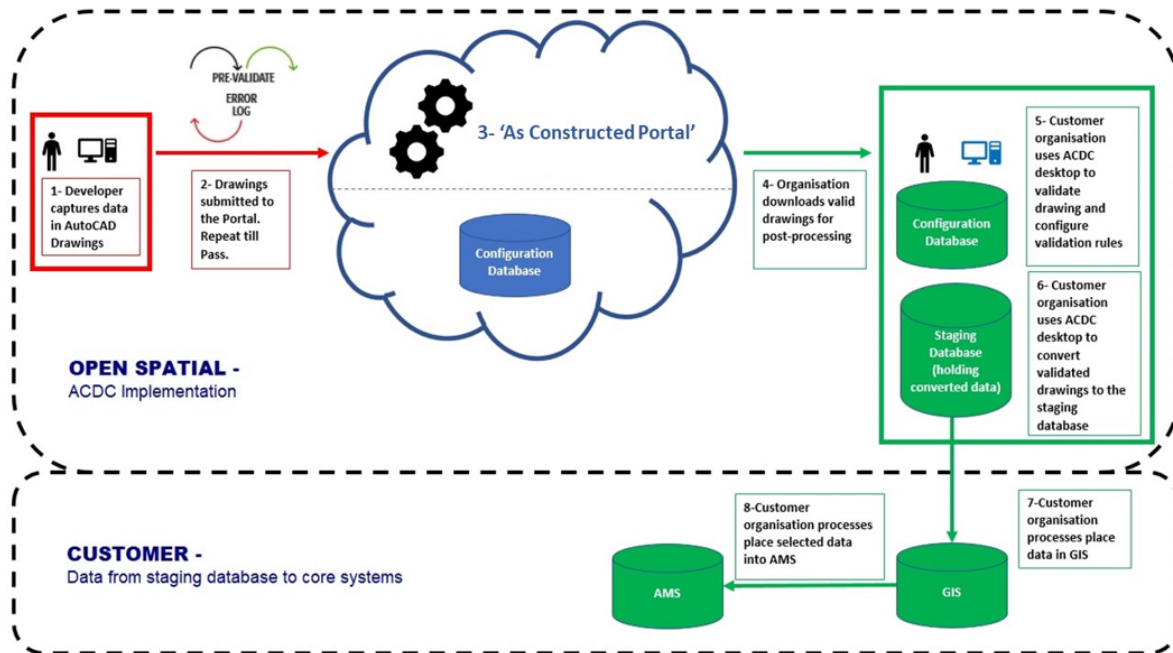


Figure 2: ACDC Workflow, Developer involved steps are 1-3

Steps to creating an ACDC Drawing:

- 1) Ensure AutoCAD A-Spec menu provided by City of Greater Dandenong is loaded (as described in ACDC Pre-requisites section of this document). If you cannot see your Menubar, activate it by typing MENUBAR in the command line and ensure the value is set to 1
- 2) Open the ACDC AutoCAD A-Spec template
- 3) Draw assets using the menu file based on the guidance below:

ACDC Drawing Capture:

The following must be captured:

- A common block: this contains common information about the drawing
- Point features are attributed blocks
 - Blocks will prompt for required information
 - Any field marked with * must be completed.
 - Some fields must be populated with the correct code from a codelist, please refer to specification that can be obtained from GISSA for these codelists.
- Lines, polylines and closed polylines must be drawn and have the corresponding attributed block added from the menu
 - Linework should be drawn in direction of flow (linework on D-Spec pipes will show direction of flow)
 - Blocks will prompt for required information
 - Any field marked with * must be completed.
 - Some fields must be populated with the correct code from a codelist, please refer to specification that can be obtained from GISSA for these codelists.
 - Block placement is detailed below:

Block Placement:

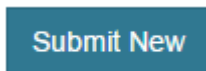
Geometry type	Block placement
Point	Block itself
Line	Mid-point of the line
Polyline	Mid-point of the segment of the polyline (except for D-SPEC property connection which should be at start)
Closed Polyline	Inside

Tips & tricks:

- Copying blocks
 - Blocks can be copied multiple times and placed at the right location for objects. Recommended to use Attsync after placing blocks to ensure spatial attributes that are populated from the block and objects within the drawing get the correct information
 - Bulk update of block attributes
 - ATTOU- output file, make changes using text editor
 - ATTIN – import the file to apply the changes
- 4) Once creation of drawing has been completed it is ready for submission to the ACDC Portal

ACDC Portal Submission:

- 5) Log on to the ACDC Portal (if you do not have an account check the ACDC Quick start section above)
- 6) Click the **Validations** tab
- 7) Click **Submit New**



- 8) Fill in the required information and attach a drawing for validation.

The **Customer** and **Project** dropdown lists contain Customer Organisation and projects to which the Developer has been assigned. (Should be City of Greater Dandenong and project indicated by the council). **Note each subdivision stage should have a separate project**

New Validation

Description

Drawing Number

Drawing Revision

Customer

Project

Drawing File

...or drop drawing here

Figure 3: Submitting a New Drawing

- 9) Click **Submit**, the drawing will be uploaded and appear in Validations.
- 10) Refresh the validations table (click in top right corner of table) for the **Status** of the drawing to be updated.
- 11) Expand the submission (click on left hand side of table) to view the **Result Summary** or upload status of a drawing.
- 12) In the example below, the drawing Failed (it did not pass the validation) as 3 errors were identified in the drawing. The user will need to download the DWG and check log file for errors.

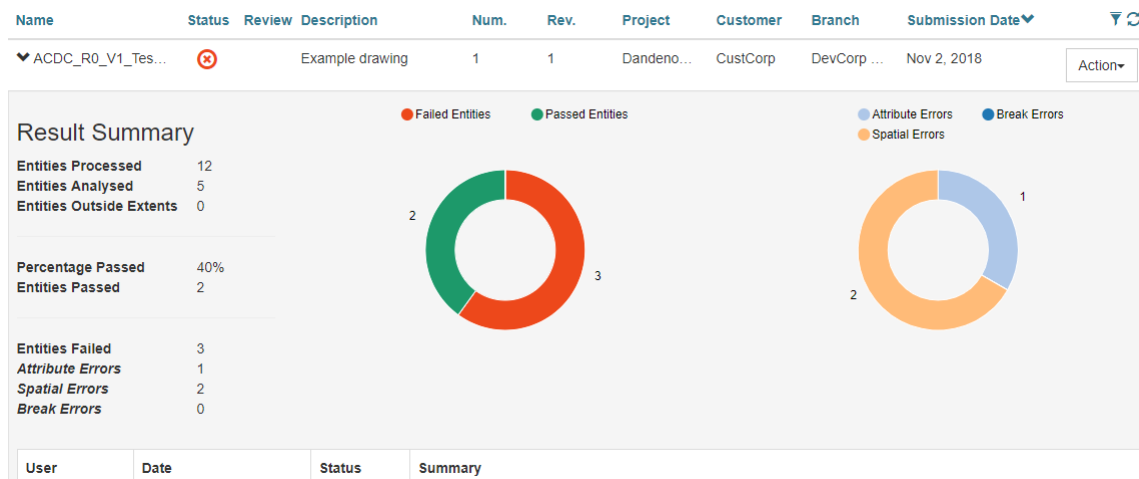


Figure 4: Failed result from ACDC Portal

Downloading and Resolving a Failed drawing

- 13) Click the **Action** menu for the drawing > **Download Failed Drawing**

The DWG & log file will be downloaded.

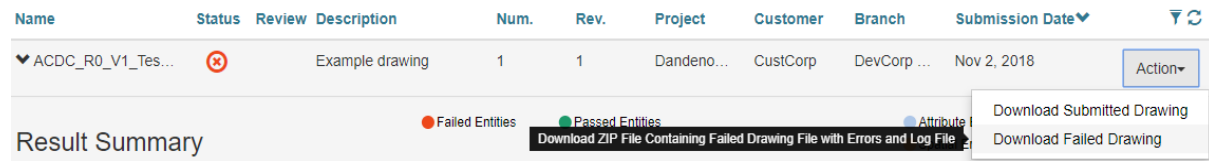


Figure 5: How to Download a Failed Drawing

14) Once the drawing is downloaded, check for the error markers highlighting the errors, correct these on the original drawing.

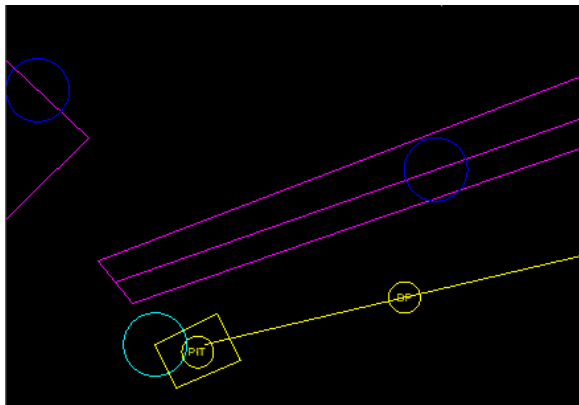


Figure 6: Error circles on a drawing

Error types:

- Attribute Error (yellow)
- Spatial/Geometry Error (red)
- Extents Error (magenta)
- Break Errors (cyan)

By clicking on the error circle, you will find details on the specific error:

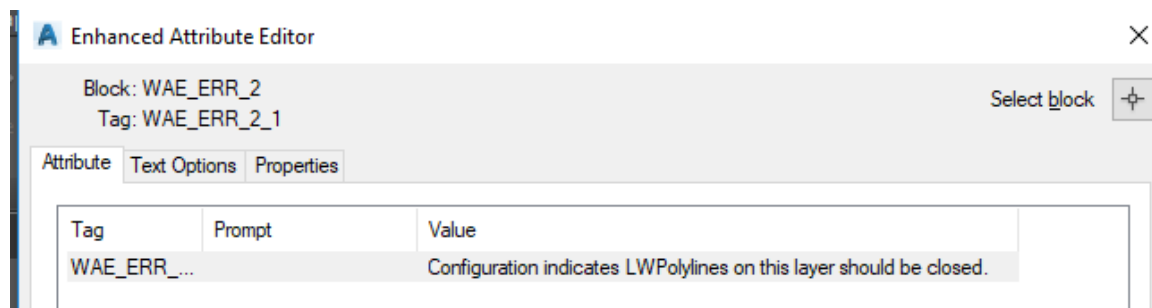



Figure 7: Attribution on an error circle block

Once the errors have been resolved the drawing can be resubmitted to the ACDC Portal (repeating steps 5-10 above) until an Accepted result is shown:

Name	Status	Converted	Review	Description	Num.Rev.	Project	Customer	Branch	Submission Date	
▼ BN0053_Vine_Stre...	🟢			ASpec V3	1	152 Stanl...	CustCorp	DevCorp ...	Jul 3, 2020	Action▼

Result Summary

Entities Processed	16
Entities Analysed	10
Entities Outside Extents	0
Percentage Passed	100%
Entities Passed	10
Entities Failed	0



Certified

Project Name	152 Stanley R...
Validation Set	ACDC_CUST_...
Date Certified	03-Jul-2020
Status	Passed

Drawing Name	BN0053_Vine_Street_ASPEC_V2...
Submitted By	DevCORP - DevCorp Australian Office
Submitted For	CustCorp
User Name	Developer User

Figure 8: Example of a Pass Result from the ACDC Portal

Project Documentation submission:

Once the above submission has passed, a PDF copy of the as-constructed drawing needs to be submitted to council via the Projects Document section of the Portal.

- 15) Login to the ACDC Portal
- 16) Navigate to the Project Documents section of the Portal
- 17) Select Customer: City of Greater Dandenong and Project as specified by Dandenong
- 18) Select Upload
- 19) Select the available Documentation Set
- 20) Use Select Documents to add the As-Constructed PDF **ensure document name contains Subdivision Name and Stage Number**
- 21) Once added, ensure Content Type is set to As-Constructed PDF
- 22) Select the Send Notification Email tick box and Submit

ACDC Portal: Other sections of the website:

- Home
- Administration
- Validations
- Documents
- Dashboard (more details below)

Sections of the dashboard:

- My Customers (customer organisations you have been assigned to and summary of submissions)
- My Active Projects (projects you have been assigned that are active)
- My Available Documents (from assigned customers)
- My Submissions (displays no. of successful and failed submissions)
- My Latest Submissions (shows most recent validation submissions)

Reports (developer admins only)

Developer administrator users can view reports and statistics about submissions on the portal by navigating to Administration> Reports

The following are available:

▼ Statistics

- [Total Drawing Submission Statistics](#)
View drawing submissions statistics for all users in the portal.
- [Per Customer Drawing Submissions Statistics](#)
View drawing submissions statistics for each customer.
- [Per Project Drawing Submissions Statistics](#)
View drawing submissions statistics for each project.
- [Project Submissions Statistics](#)
View Average of Submissions Per Project.

▼ Reports

- [Activity Report](#)
View Activity analysis for all developers in the portal.
- [Submissions Report](#)
View Submissions in the period.

Developer responsibilities:

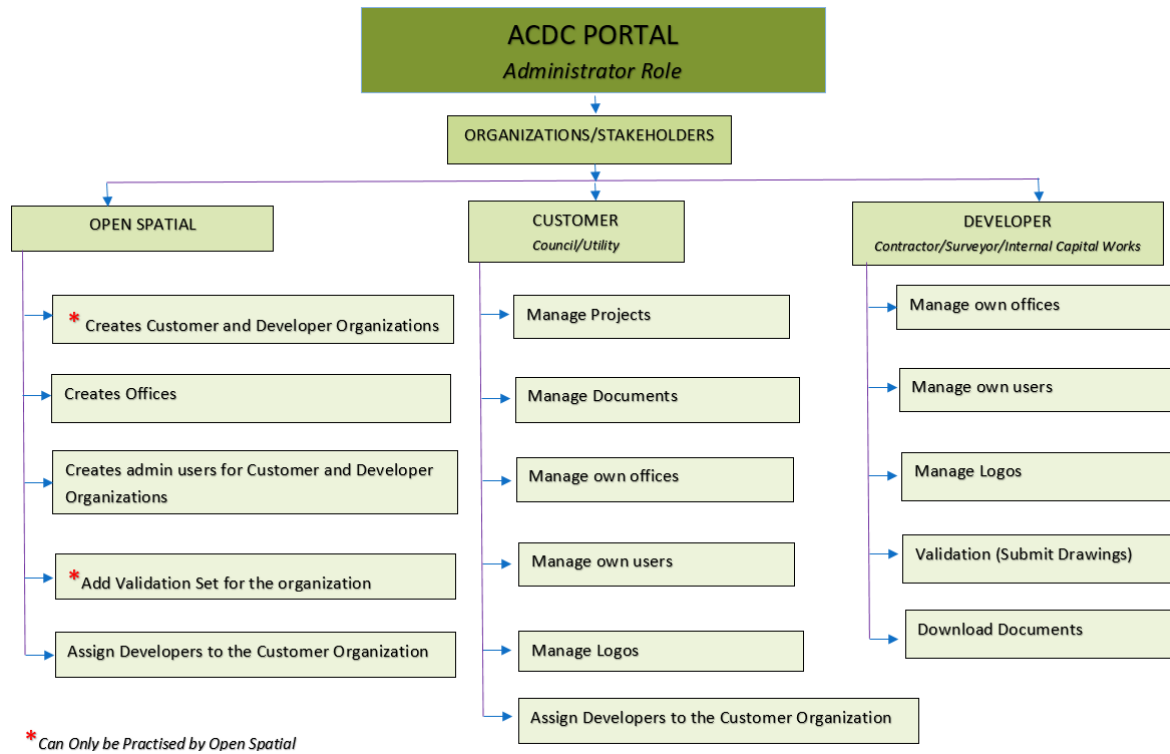



Figure 9: Roles for various stakeholders for ACDC Portal

Portal: (Administrator and/or normal user)

- Add and manage own users and offices.
- Upload and manage documents for developers
- Manage logo and review some statistics and reports
- Submit drawings for validation

Common issues:

- My error circles are displaying in the inverse colour:
 - A: with the command GRAPHICSCONFIG turn hardware acceleration OFF
- Uploading my drawing to the portal is displaying the status error 
 - A: If you have used the approved template & menu then get in touch with Open Spatial support@openspatial.com with the drawing in the attachment.
- I cannot see any projects to make submissions to
 - A: Get in touch with City of Greater Dandenong and ask to be assigned to the project you are missing
- After typing menuload the menu is still not present:
 - A: Type “Menubar” and value “1” to make the menu visible