

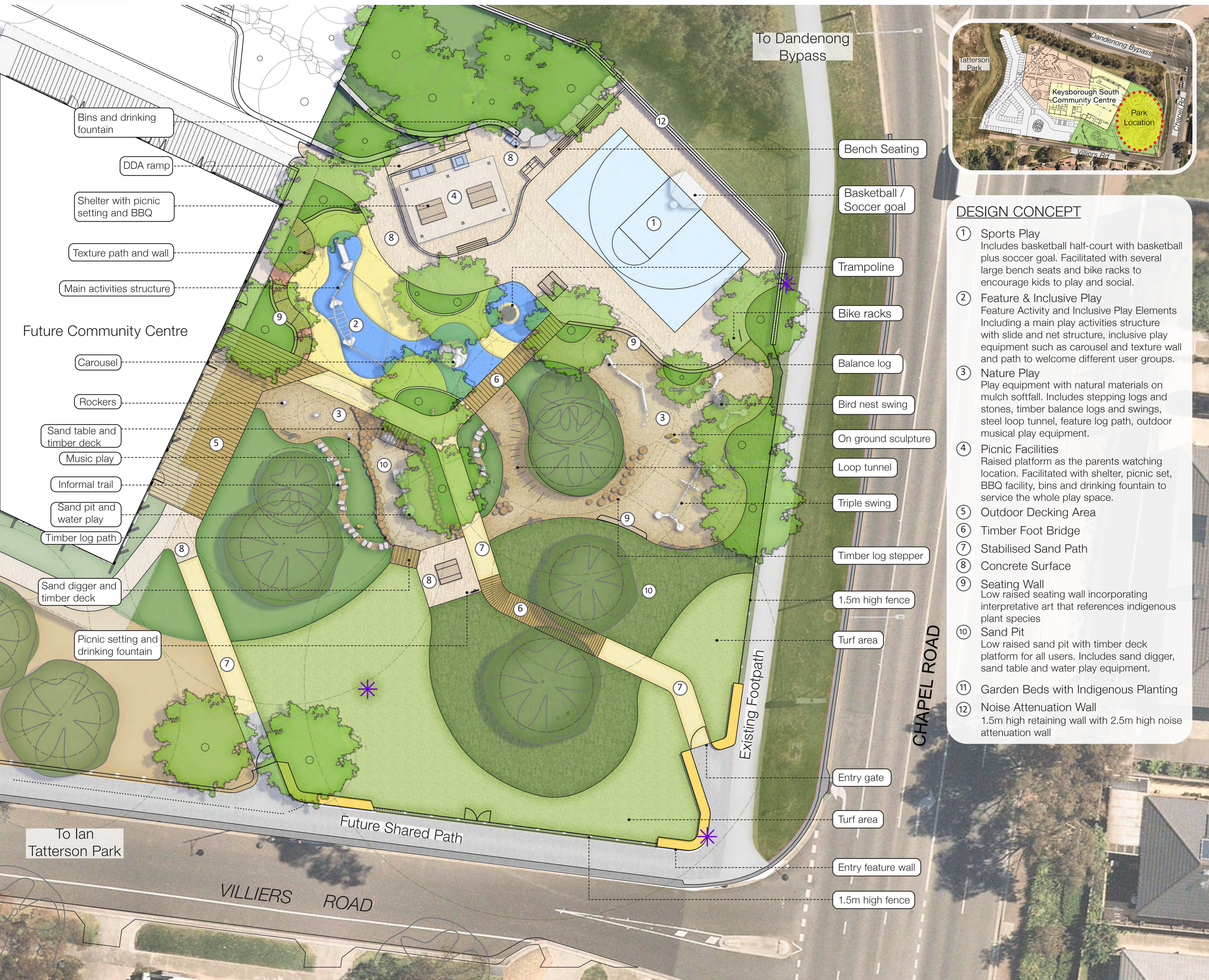
Keysborough South Community Hub - Proposed New Neighbourhood Playground

Corner of Villiers Road and Chapel Road, Keysborough



PROPOSED PLAN

LOCATION MAP

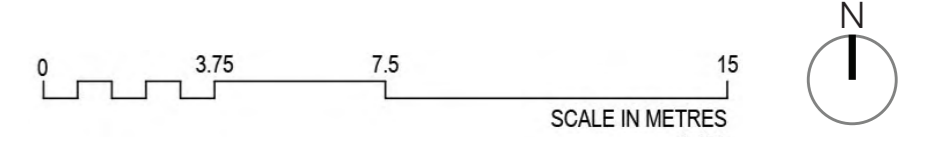


DESIGN CONCEPT

- ① **Sports Play**
Includes basketball half-court with basketball plus soccer goal. Facilitated with several large bench seats and bike racks to encourage kids to play and social.
- ② **Feature & Inclusive Play**
Feature Activity and Inclusive Play Elements including a main play activities structure with slide and net structure, inclusive play equipment such as carousel and texture wall and path to welcome different user groups.
- ③ **Nature Play**
Play equipment with natural materials on mulch softfall. Includes stepping logs and stones, timber balance logs and swings, steel loop tunnel, feature log path, outdoor musical play equipment.
- ④ **Picnic Facilities**
Raised platform as the parents watching location. Facilitated with shelter, picnic set, BBQ facility, bins and drinking fountain to service the whole play space.
- ⑤ **Outdoor Decking Area**
- ⑥ **Timber Foot Bridge**
- ⑦ **Stabilised Sand Path**
- ⑧ **Concrete Surface**
- ⑨ **Seating Wall**
Low raised seating wall incorporating interpretative art that references indigenous plant species
- ⑩ **Sand Pit**
Low raised sand pit with timber deck platform for all users. Includes sand digger, sand table and water play equipment.
- ⑪ **Garden Beds with Indigenous Planting**
- ⑫ **Noise Attenuation Wall**
1.5m high retaining wall with 2.5m high noise attenuation wall

LEGEND

Existing trees to be retained	Proposed trees	Proposed garden bed	Proposed garden bed with indigenous plants	Concrete footpath	Stabilised sand path
Timber foot bridge	Timber deck	Picnic setting	Rubber softfall	Timber mulch softfall	Indicative public art location



EXAMPLE OF SUGGESTED PLAYGROUND EQUIPMENT

- Possible equipment ideas for the playground. Colour and details to be finalised in the next design phase.

