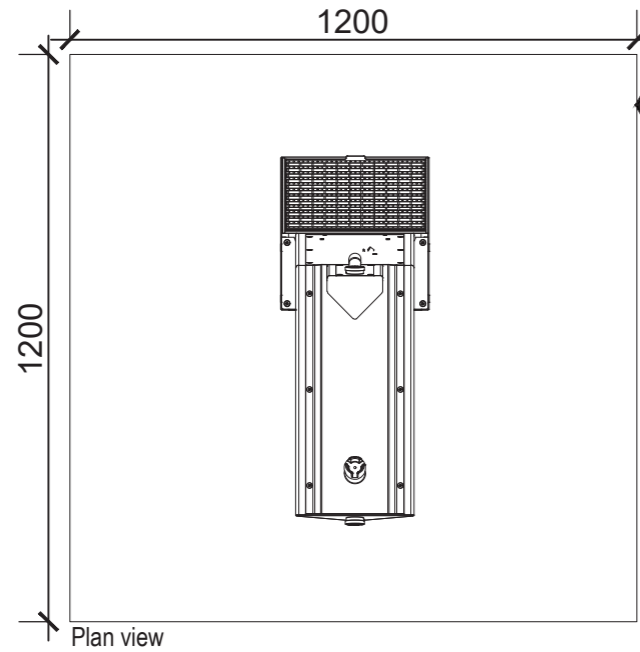


**Technical Details**

Structural frame	Stainless Steel
Housing unit	Anodised aluminium
Graphic panels	Stainless steel
Water supply connection	1/2 inch supply line with 1/2 inch Male BSP connection
Drainage	50mm PVC / 2x90mm PVC



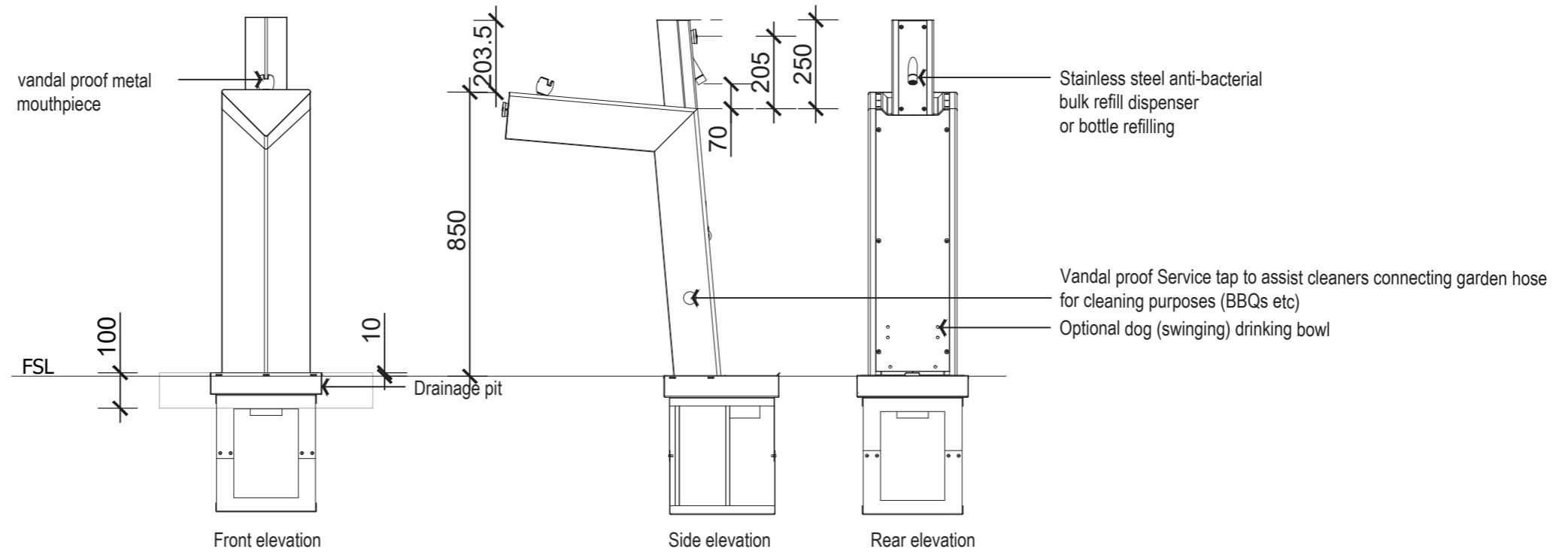
75mm concrete pad with crushed rock base

**\*NOTE:**  
Fall away from drinking fountain drain and connected to kerb, storm water system, or if not applicable for the location, a large sump pit can be installed.

Utility water connection is to be in the Developers name until handover occurs.

No Decal stickers, no water filters to be included.

CIVIQ or similar approved



**GREATER DANDENONG**

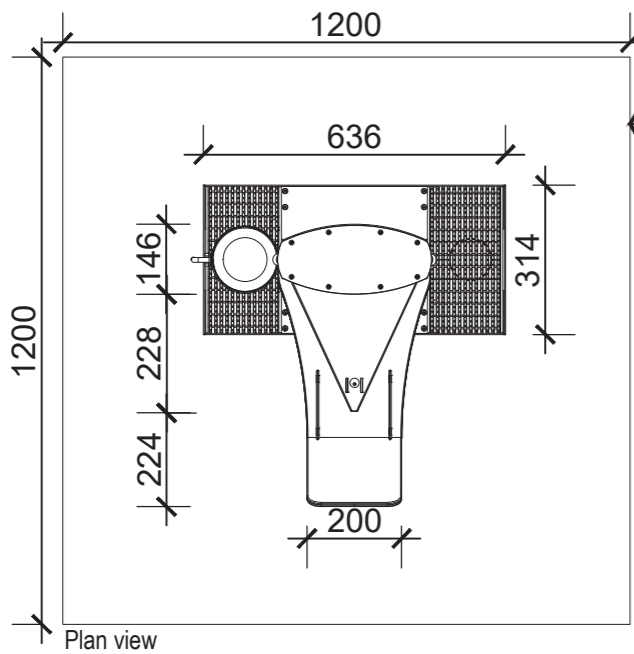
DRINKING FOUNTAIN - A

LAST UPDATED - SEPTEMBER 2022

SCALE 1: 20 @ A3

INFRASTRUCTURE PLANNING

**SD1000-A** SHEET 1 of 1



75mm concrete pad with crushed rock base

**\*NOTE:**

Fall away from drinking fountain drain and connected to kerb, storm water system, or if not applicable for the location, a large sump pit can be installed.

Utility water connection is to be in the Developers name until handover occurs.

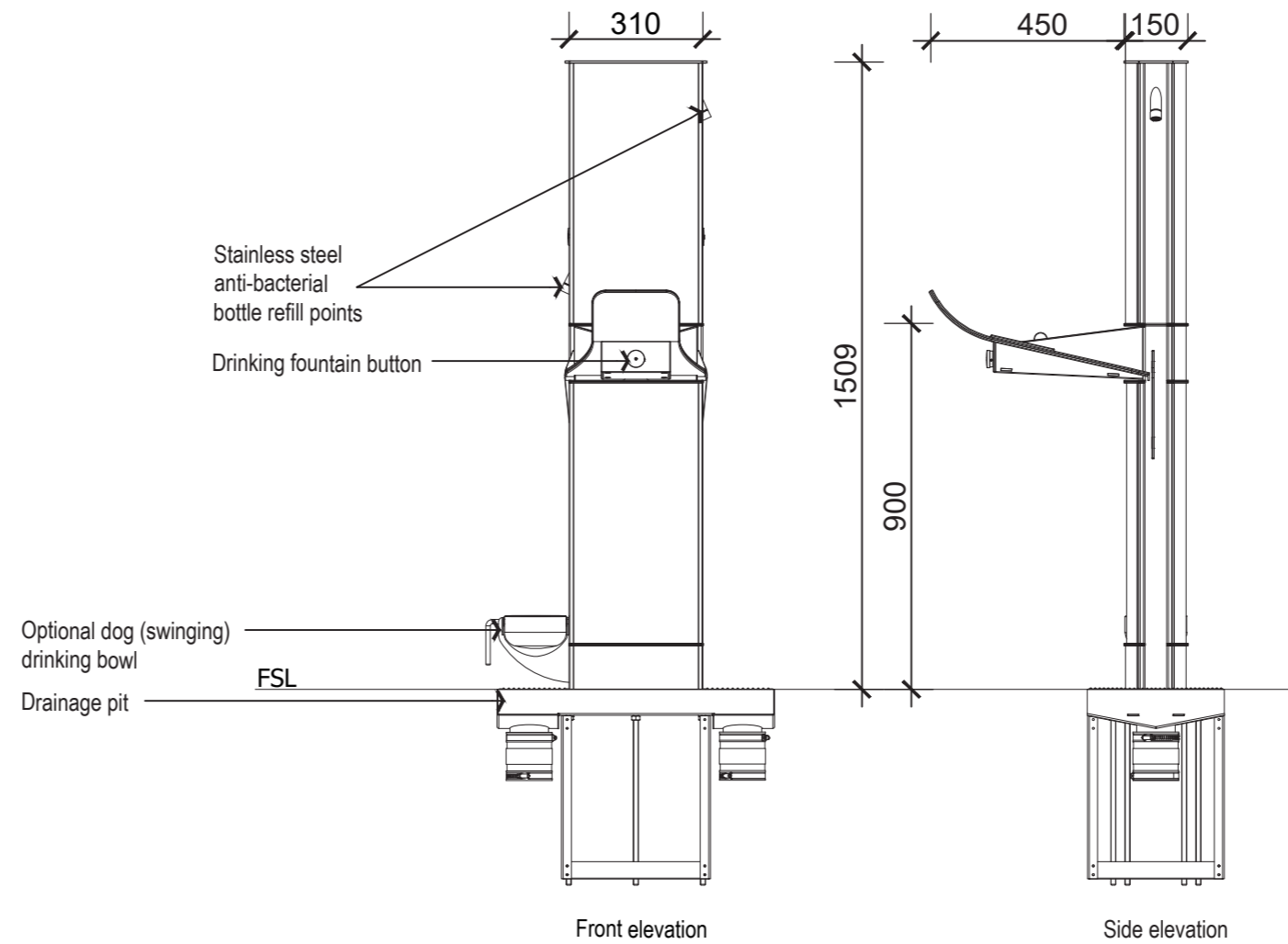
No Decal stickers, no water filters to be included.

Vandal proof service tap may be required.

CIVIQ or similar approved

**Technical Details**

Structural frame	Stainless Steel
Housing unit	Anodised aluminium
Graphic panels	Stainless steel
Water supply connection	1/2 inch supply line with 1/2 inch Male BSP connection
Drainage	50mm PVC / 2x90mm PVC



**GREATER DANDENONG**

DRINKING FOUNTAIN - B

LAST UPDATED - SEPTEMBER 2022

SCALE 1: 20 @ A3

INFRASTRUCTURE PLANNING

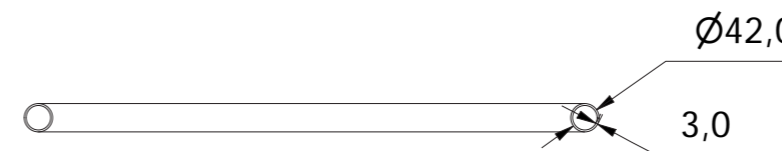
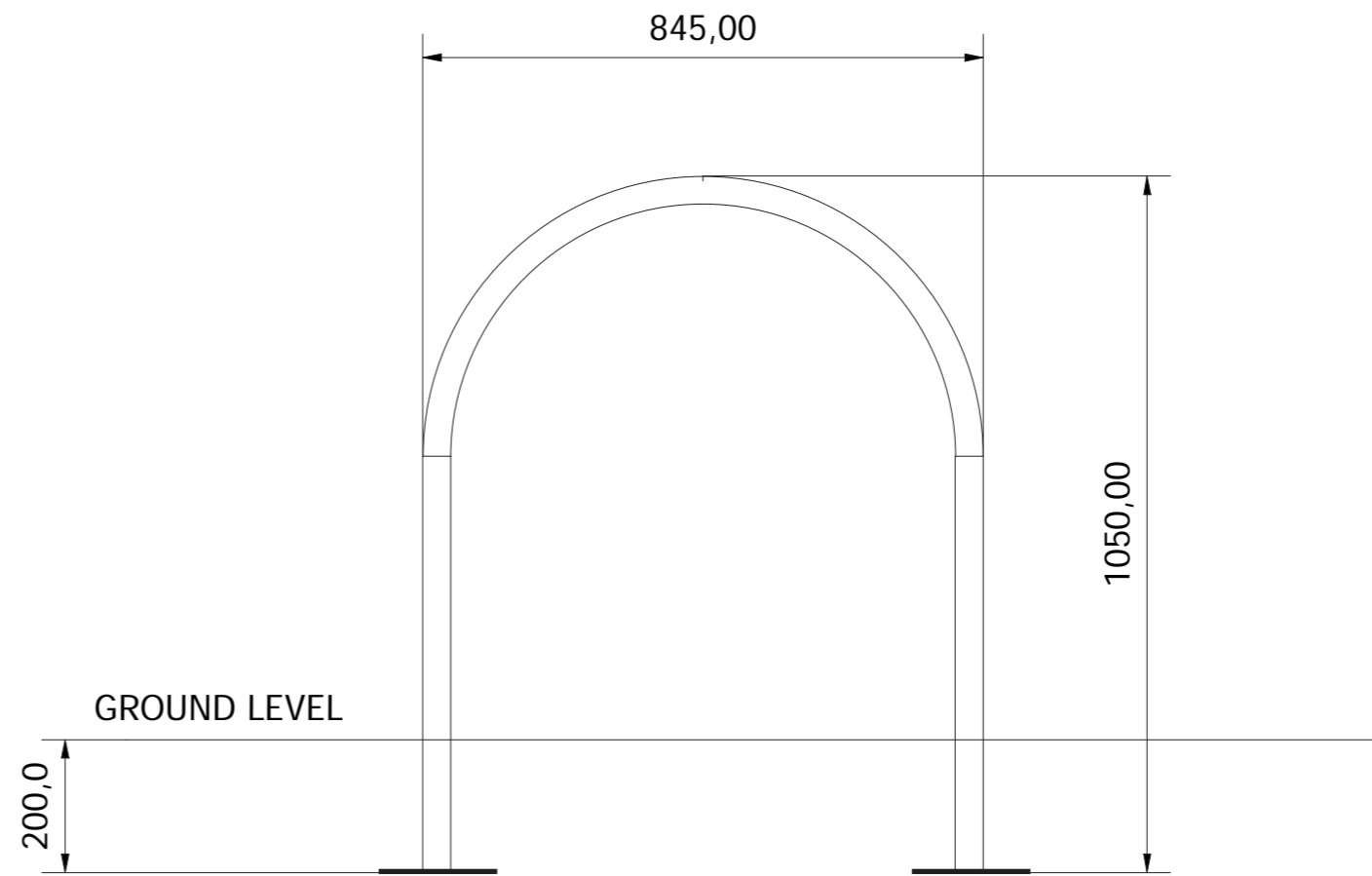
SD1000-B SHEET 1 of 1



Material - Stainless Steel - Fine Brushed Finish  
 All Bends 90° U-S-O  
 Break all sharp edges

**Application**

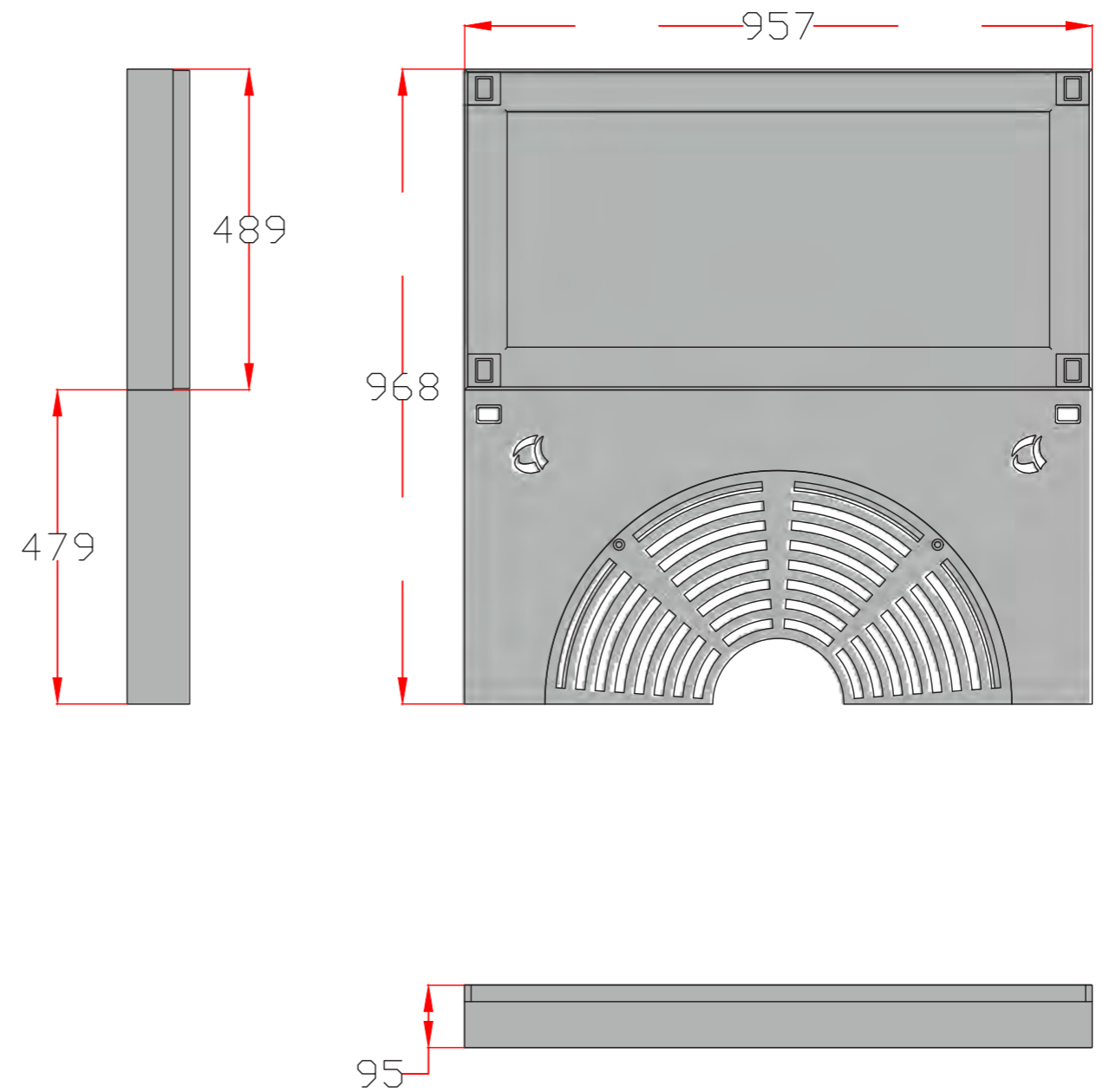
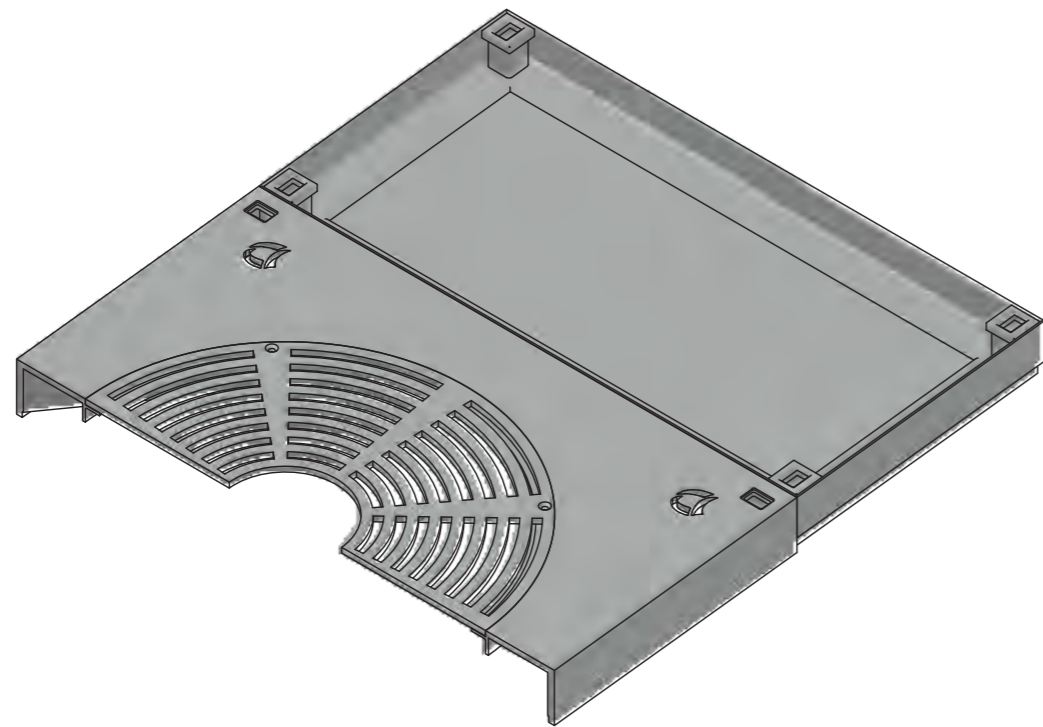
Bicycle hoops should preferably be installed in groups of 2, 3 or more but can be installed singularly. They should be spaced 1.2 m apart and offset a minimum of 700mm from the back of kerb, building or wall. The racks can be placed parallel to the street or at an angle of 90° or 45°, so as not to impede pedestrian access along the footpath.



**GREATER DANDENONG**

CIRCULAR BICYCLE HOOP (INGROUND)

LAST UPDATED - SEPTEMBER 2022	
SCALE 1: 20 @ A3	
INFRASTRUCTURE PLANNING	
SD1001	SHEET 1 of 1



Class Rating (AS3996 - 2019)  
 Primary Material - Galvanized MS



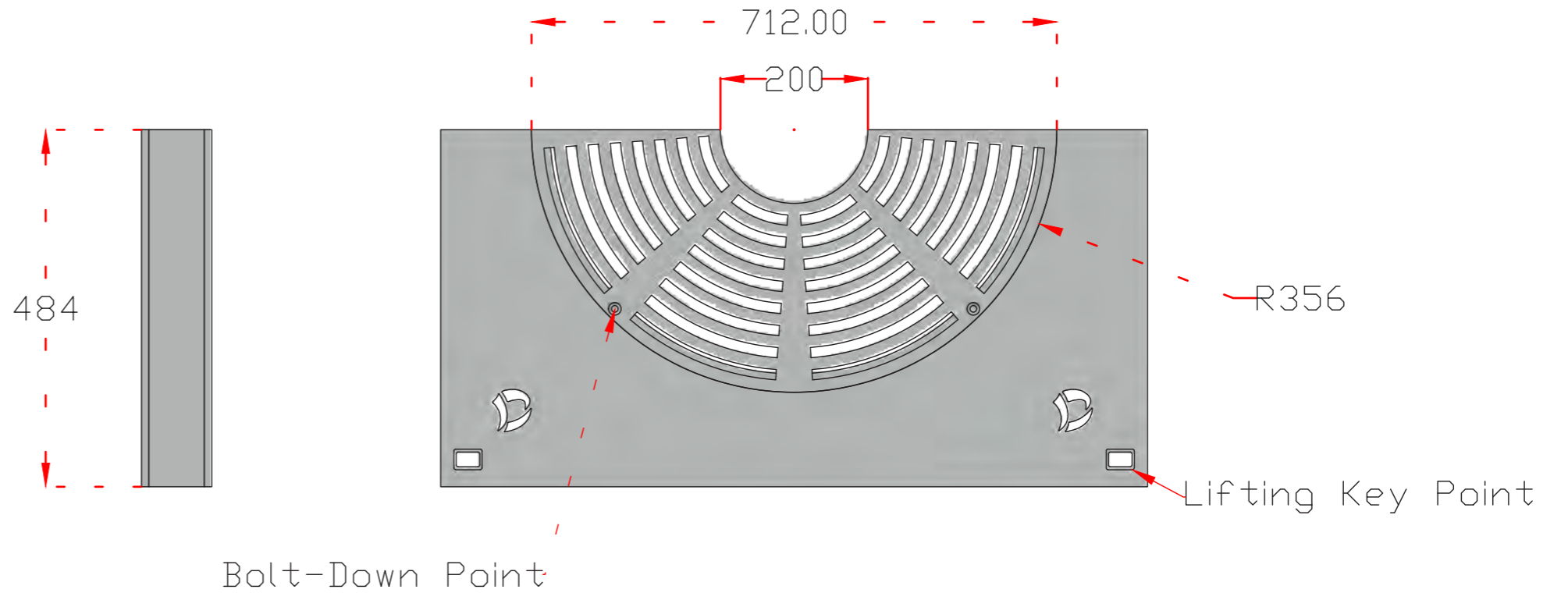
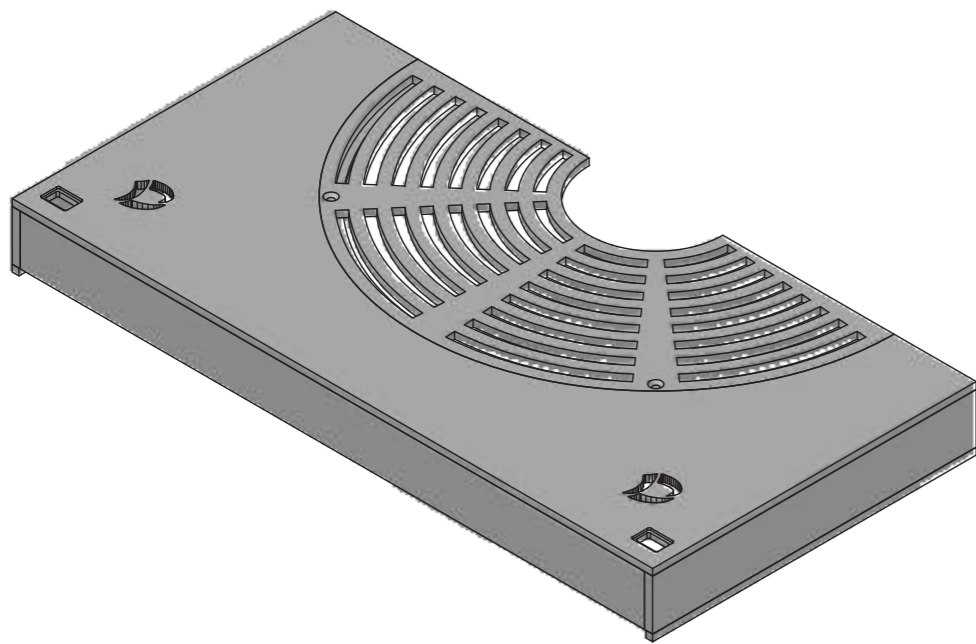
**GREATER DANDENONG**

960x1945x95mm 4-Part Tree Grate and Paver Infill Lid (half section)

LAST UPDATED - SEPTEMBER 2022  
 NTS

INFRASTRUCTURE PLANNING

SD1002-A SHEET  
 1 of 1



Class Rating (AS3996 - 2019)  
 Primary Material - Galvanized MS

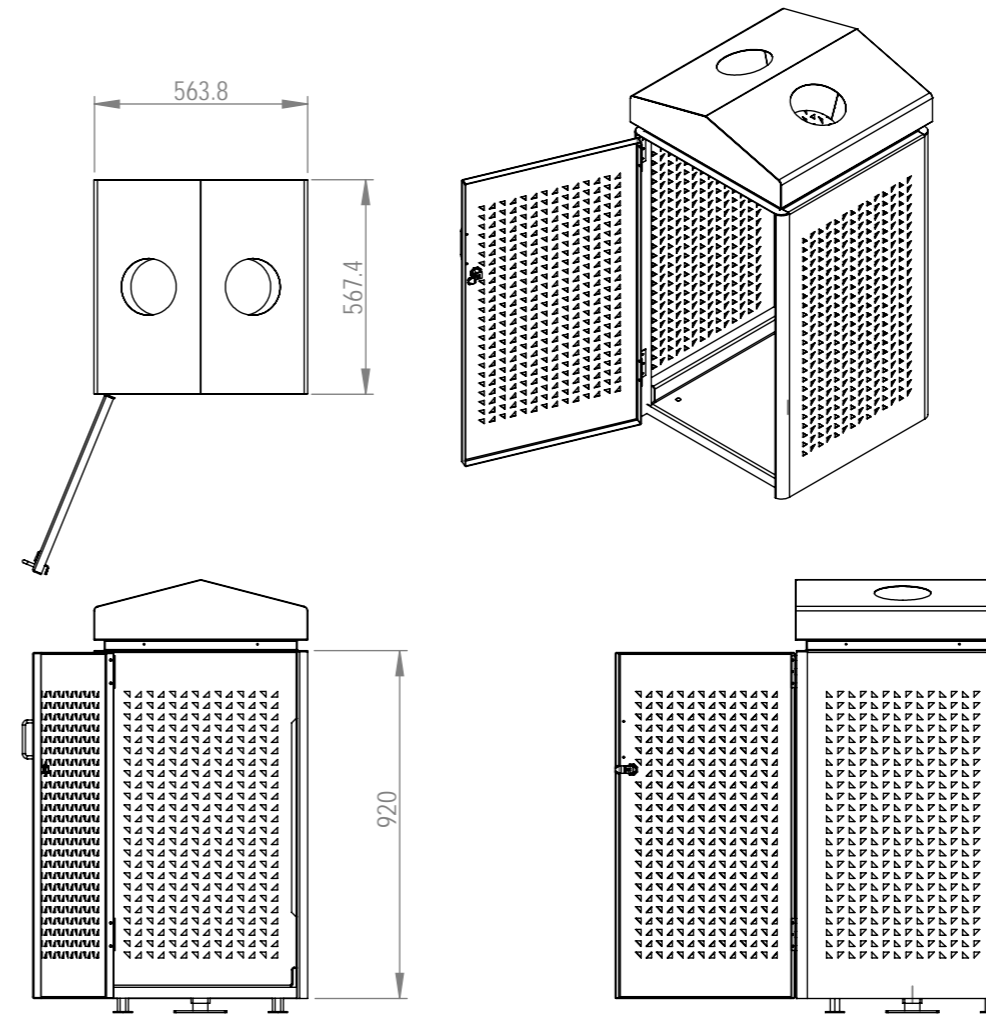


**GREATER DANDENONG**

960x975x95mm 2-Part Tree Grate (half section)

LAST UPDATED - SEPTEMBER 2022
NTS
INFRASTRUCTURE PLANNING
SD1002-B SHEET 1 of 1

ITEM NO.	PART NUMBER	QTY.
1	Dandenong bin - base plate	1
2	Dandenong bin - door	1
3	Dandenong bin - lock plate	1
4	Dandenong bin - door handle	1
5	Dandenong bin - lid RECYCLE	1
6	square lock (see page 1)	1
7	Dandenong bin - body	1
8	Dandenong bin - FLOOR MOUNTING BRKT	1
9	Dandenong bin - door lock cam	1
10	Dandenong bin - hinge assembly.SLDPRT	2



Note:  
Finish: Raw Stainless Steel



**GREATER DANDENONG**

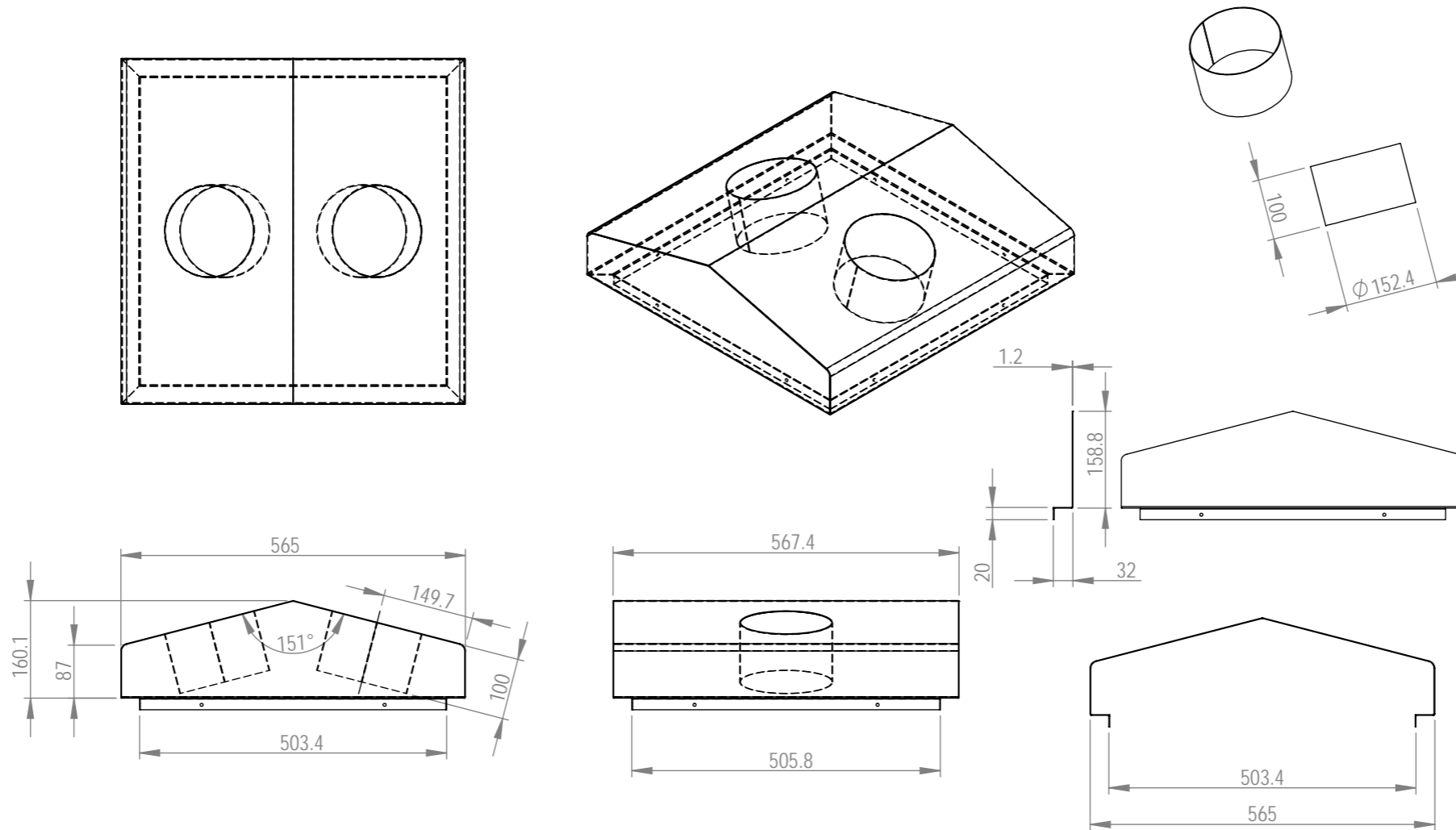
Recycle bin - 80lts  
Main Assembly

LAST UPDATED - SEPTEMBER 2022

SCALE: 1:20 @ A3  
Units in mm

INFRASTRUCTURE PLANNING

SD1003-A SHEET  
1 of 5



Note:  
 Finish: Raw  
 Material: SS304

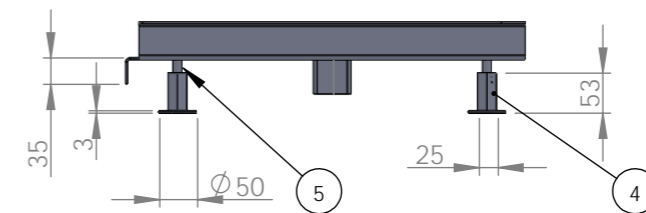
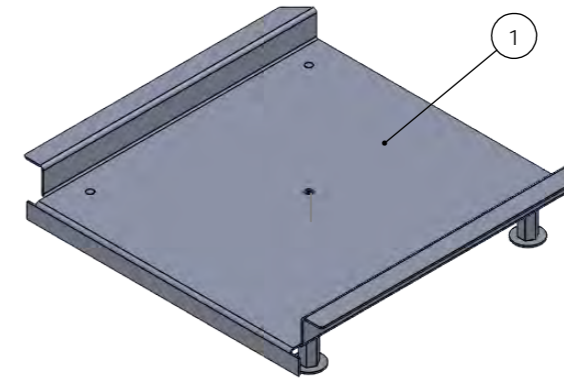
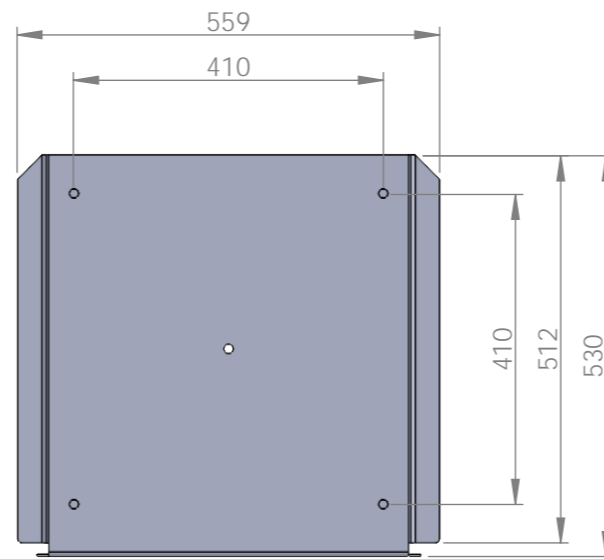
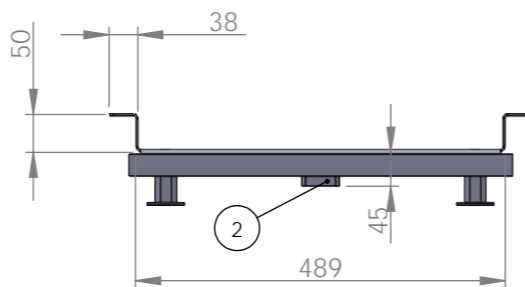
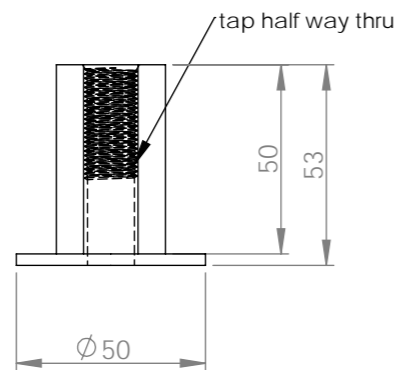
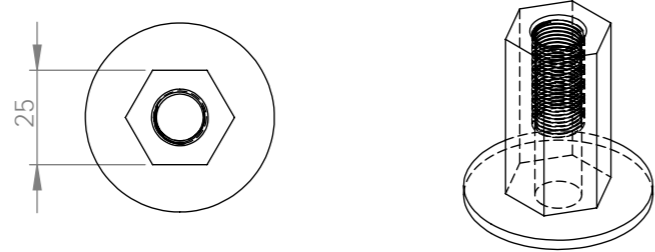


# GREATER DANDENONG

Recycle bin - 80lts  
 Lid assembly

LAST UPDATED - SEPTEMBER 2022
SCALE: 1:10 @ A3 Units in mm
INFRASTRUCTURE PLANNING
SD1003-A SHEET 2 of 5

ITEM NO.	QTY.	DESCRIPTION	LENGTH
1	1	Sheet	
2	1	TUBE, SQUARE 50 X 50 X 3	45
3	1	M12 screw	
4	2	adjustable foot	
5	3		
6	2		



Note:  
Finish: Raw  
Material: SS304



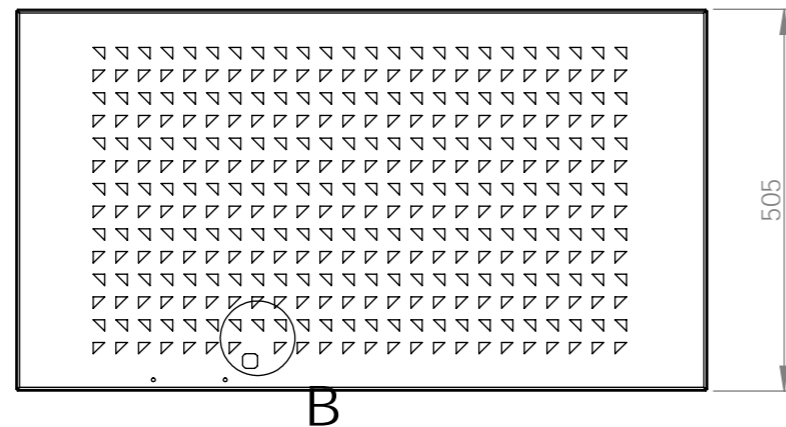
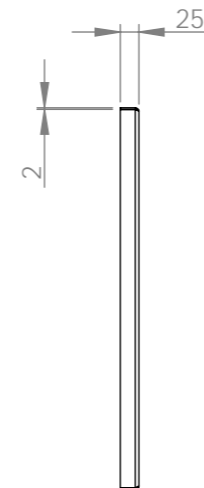
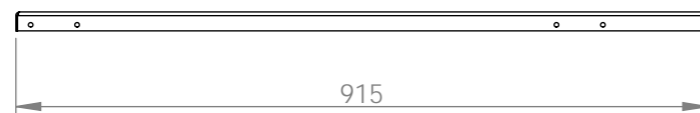
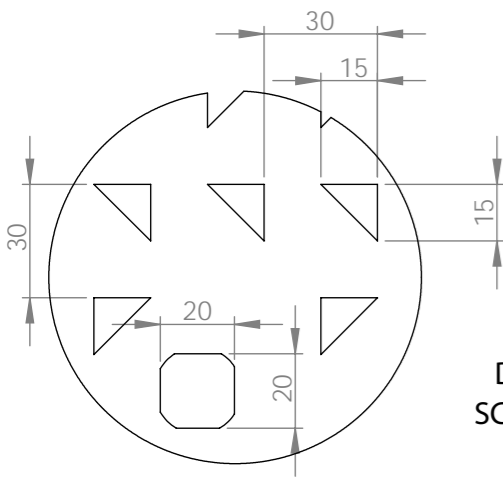
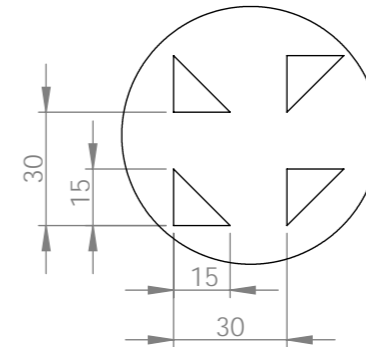
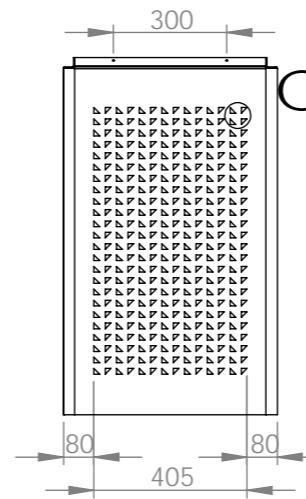
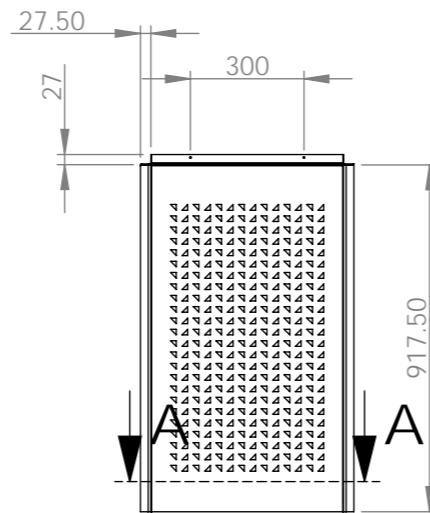
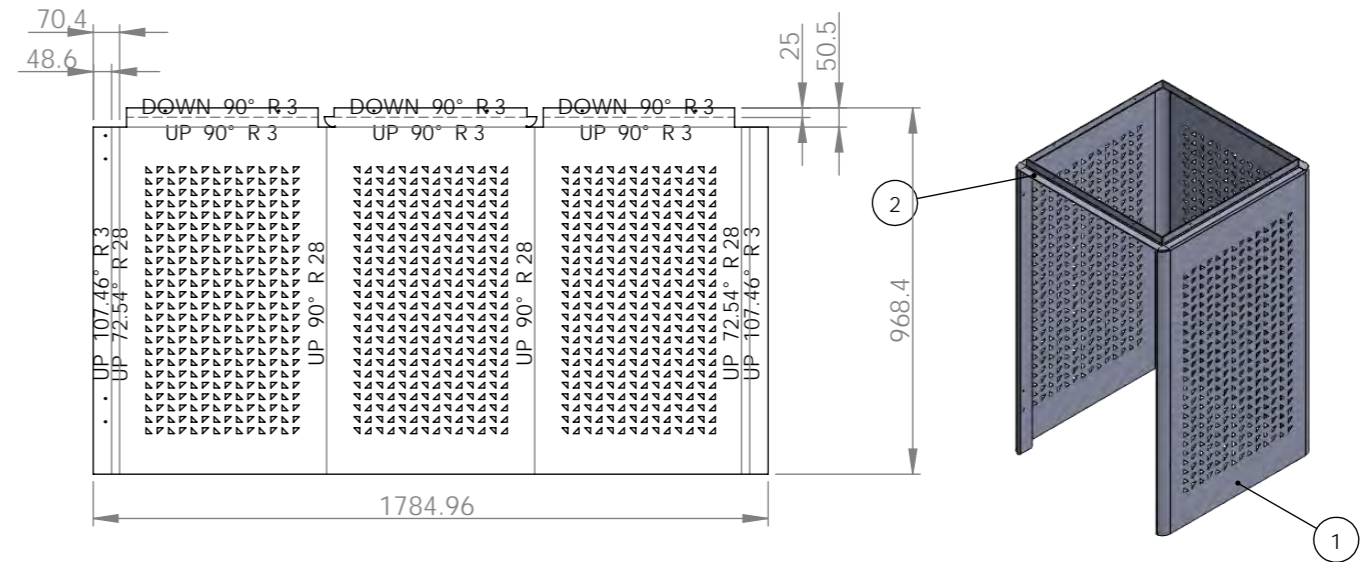
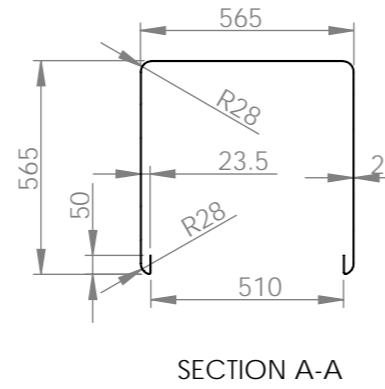
**GREATER DANDENONG**

Recycle bin - 80lts  
Base plate/ ground fixing

LAST UPDATED - SEPTEMBER 2022  
SCALE: 1:20 @ A3  
Units in mm  
INFRASTRUCTURE PLANNING  
**SD1003-A** SHEET  
3 of 5



Weldment Cut List			
ITEM NO.	QTY.	DESCRIPTION	LENGTH
1	1	Sheet	
2	1	Sheet	



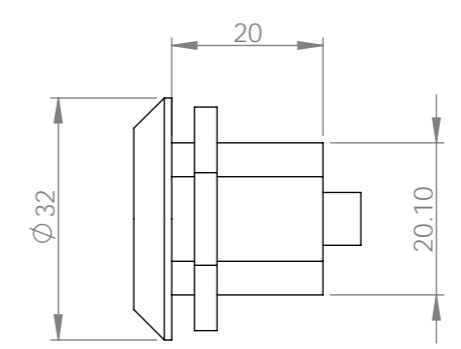
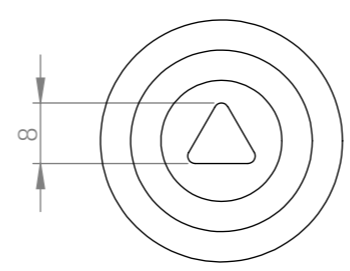
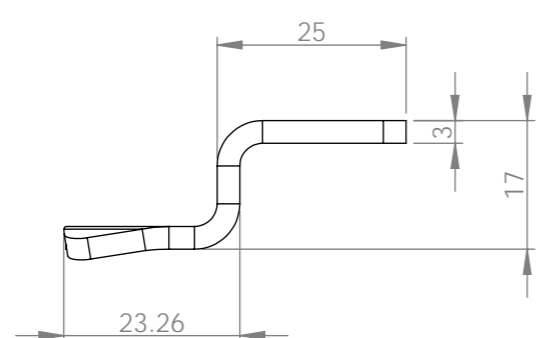
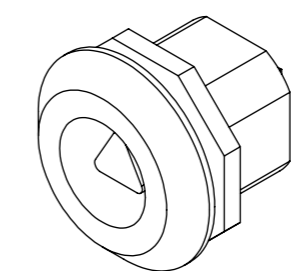
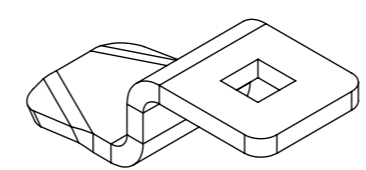
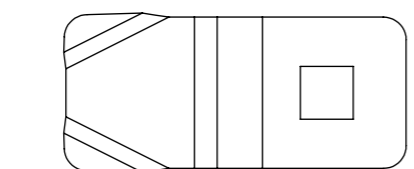
Note:  
Finish: Raw  
Material: SS304



**GREATER DANDENONG**

Recycle bin - 80lts  
Bin Surround - Body wrap

LAST UPDATED - SEPTEMBER 2022  
SCALE: 1:20 @ A3  
Units in mm  
INFRASTRUCTURE PLANNING  
**SD1003-A** SHEET  
4 of 5



Note:  
Finish: Raw  
Material: SS304

Spring loaded catches to stop doors from being left open and becoming damaged.



**GREATER DANDENONG**

Recycle bin - 80lts  
Lock Cam

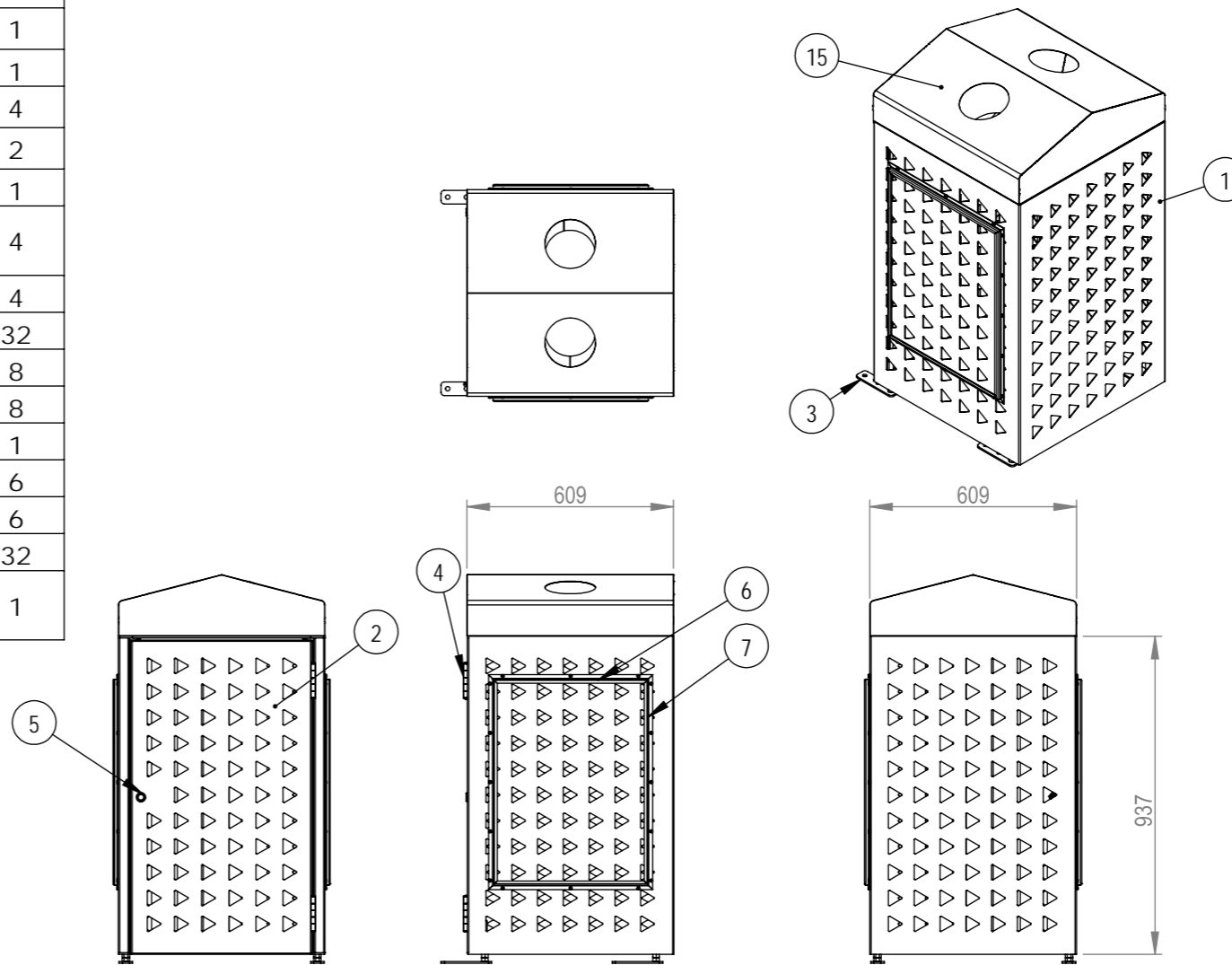
LAST UPDATED - SEPTEMBER 2022

SCALE: 1:20 @ A3  
Units in mm

INFRASTRUCTURE PLANNING

**SD1003-A** SHEET  
5 of 5

ITEM NO.	PART NUMBER	QTY.
1	Litter Bin Surround - Body Assembly	1
2	Litter Bin Surround - Door	1
3	Litter Bin Surround - Foot Assembly	4
4	Hinge SS 100x75x2.5	2
5	Latch Lock - Quarter Turn	1
6	Litter Bin Surround - Frame Top-Bottom	4
7	Litter Bin Surround - Frame Side	4
8	M5 Nutsert	32
9	AS B194 - 1_4 x 1_2-CR1 AB	8
10	IFI - I0.25 - 20(1)	8
11	Lock - CAM	1
12	ANSI B18.6.4 - 1_4-20 UNC - 1(16) C	6
13	Hex Nut 1_4	6
14	ANSI B18.3.4M - M5 x 0.8 x 16(1)	32
15	Litter Bin Surround - recycle Lid Assembly	1



Note:  
Finish: P/C Charcoal



**GREATER DANDENONG**

Recycle bin - 120Lts  
Main Assembly

LAST UPDATED - SEPTEMBER 2022

SCALE: 1:20 @ A3  
Units in mm

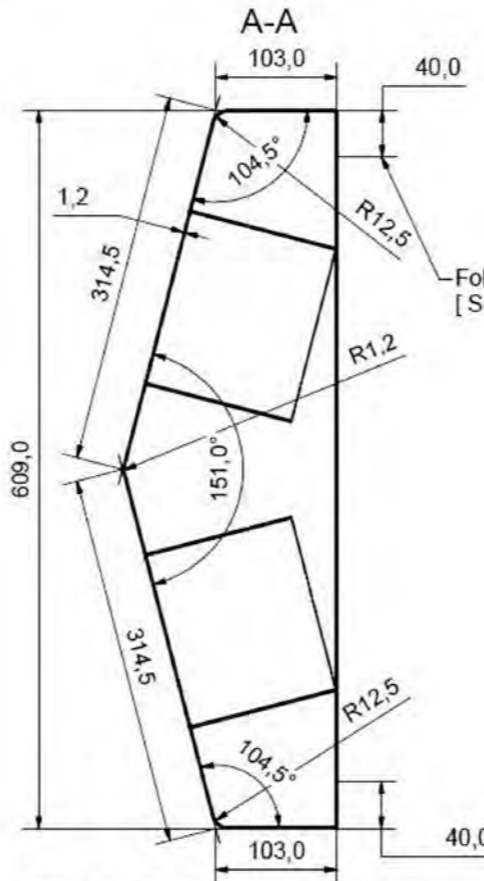
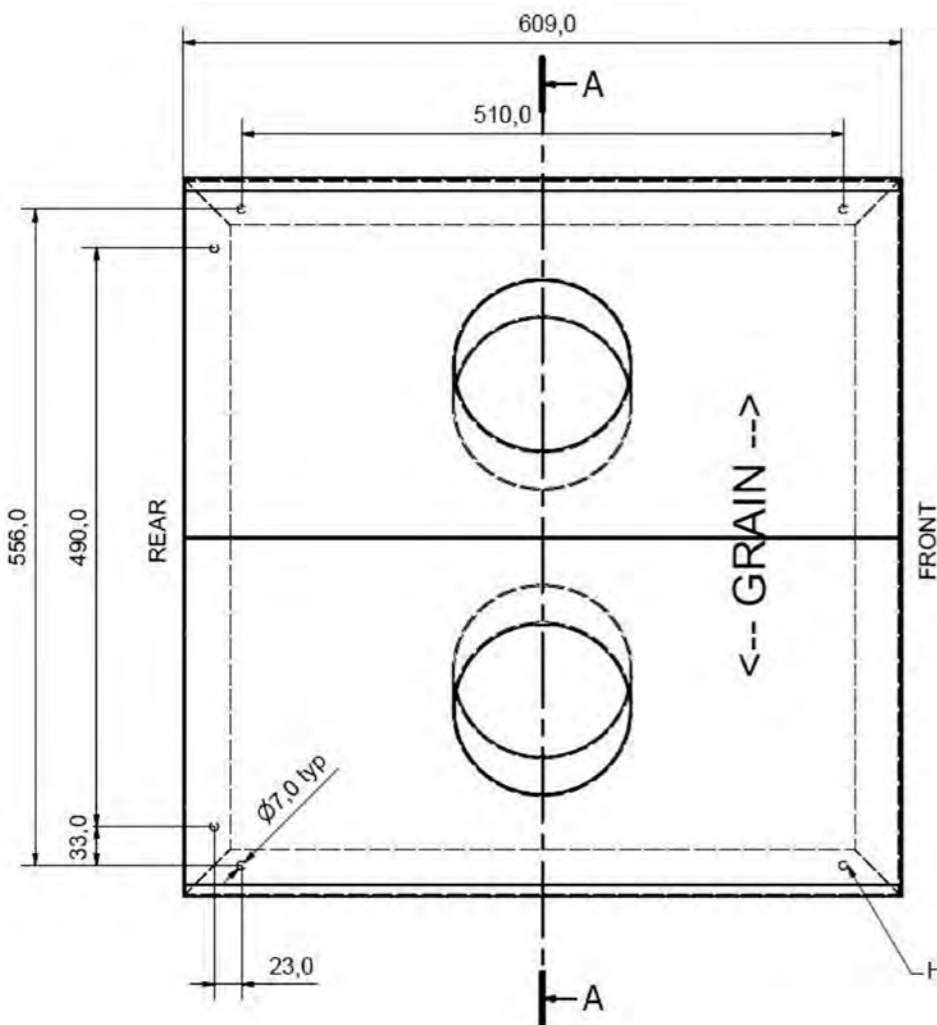
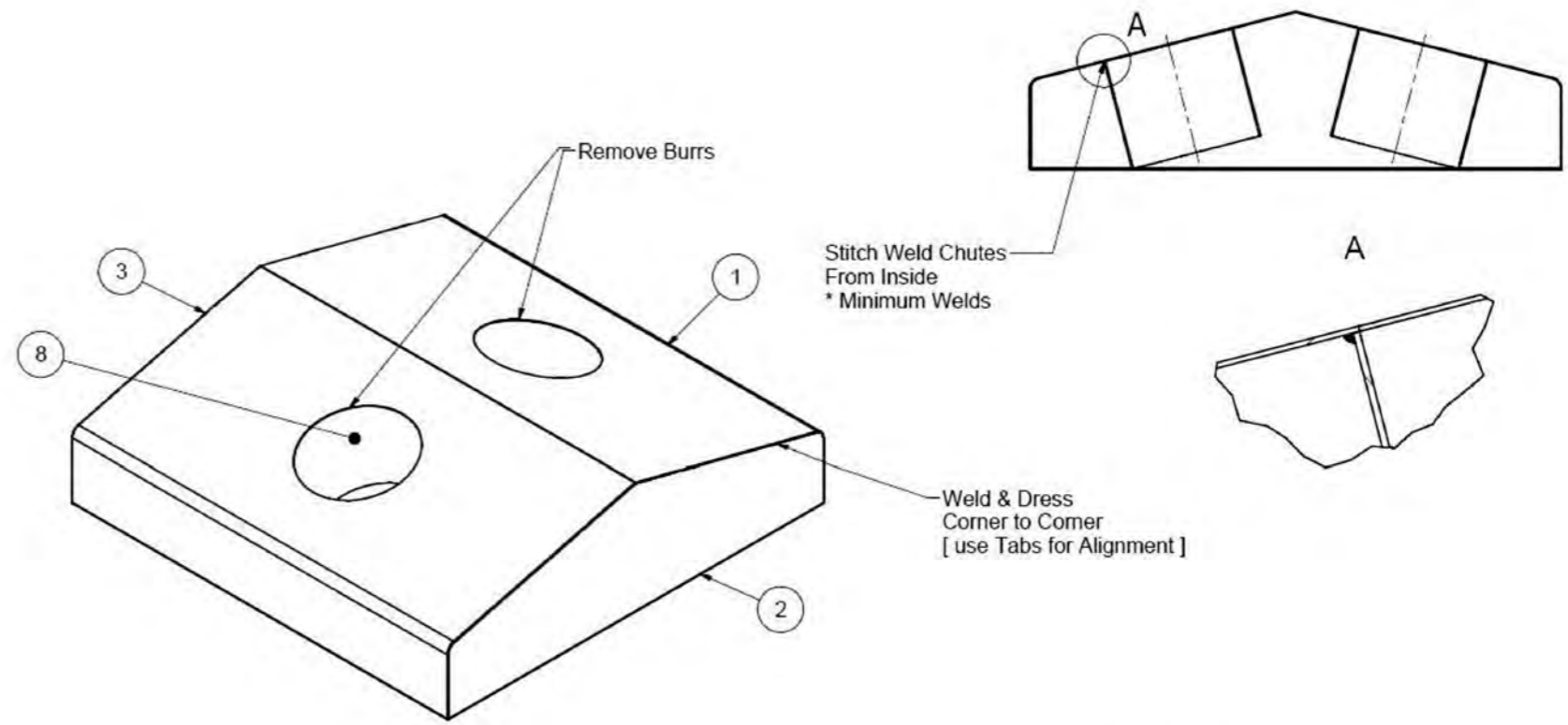
INFRASTRUCTURE PLANNING

SD1003-B SHEET  
1 of 9

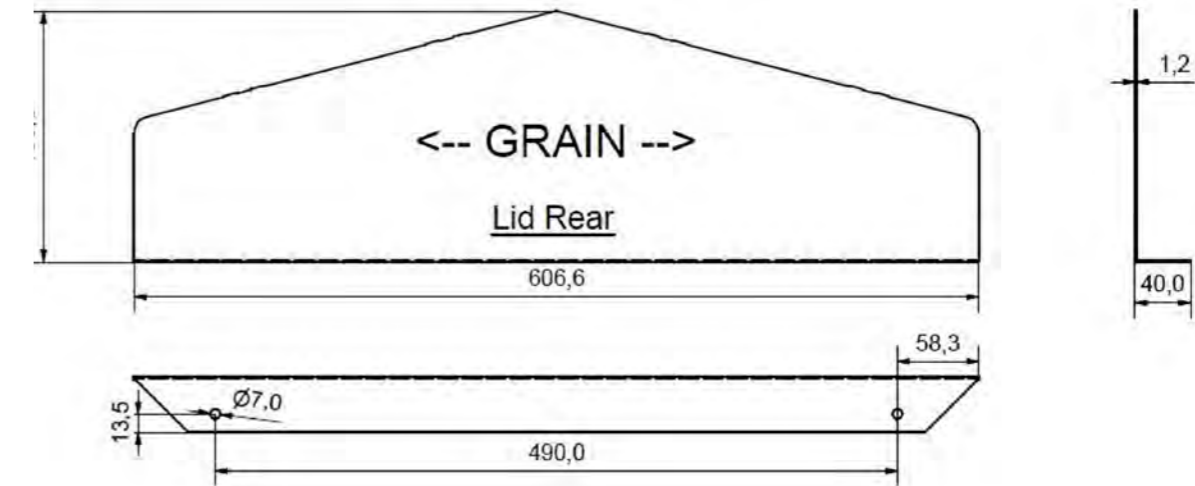
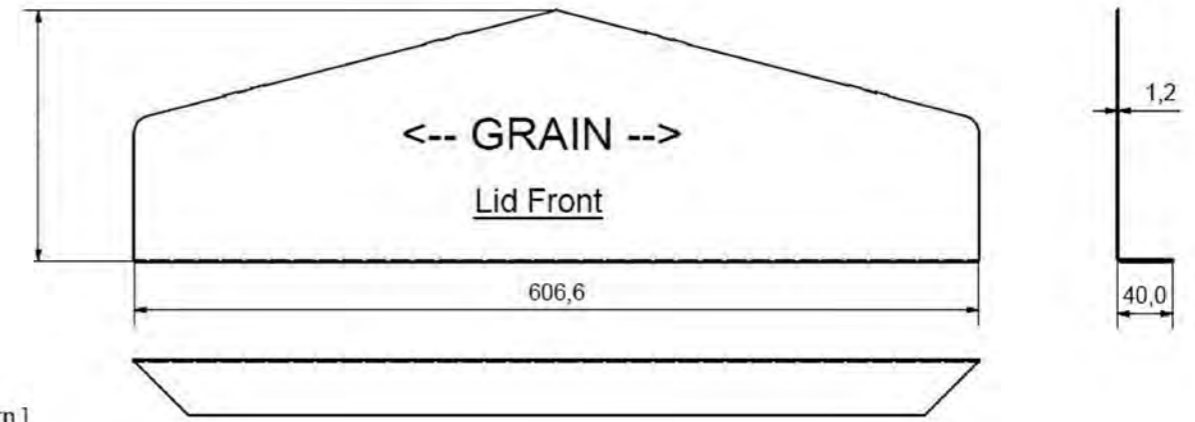
Parts List						
ITEM	QTY	PART NUMBER	DESCRIPTION	Flat Length	Flat Width	Thickness
1	1	Litter Bin Surround - Recycle Lid Wrap		607,8 mm	901,6 mm	1.200 mm
2	1	Litter Bin Surround - Recycle Lid Front		607,8 mm	218,2 mm	1.200 mm
3	1	Litter Bin Surround - Recycle Lid Rear		607,8 mm	218,2 mm	1.200 mm
8	2	Litter Bin Surround - Recycle Chute				

Note:  
 Finish: #4  
 Material: SS 304 #4

Remove all burrs and sharp edges  
 No scratches



Folding Details For Wrap  
 [ See Next Sheet For Flat Pattern ]



Hole Jig Required to Align Parts



**GREATER DANDENONG**

Recycle bin - 120lts  
 Lid Assembly

LAST UPDATED - SEPTEMBER 2022

Units in mm

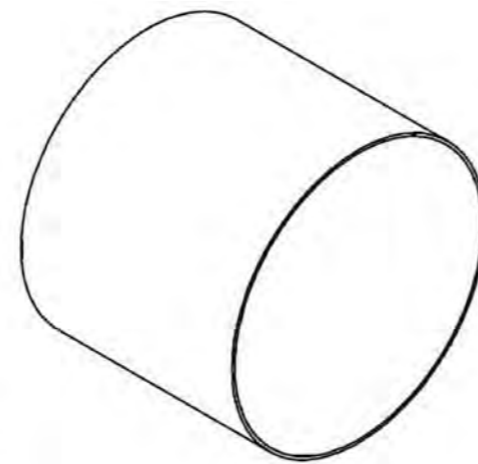
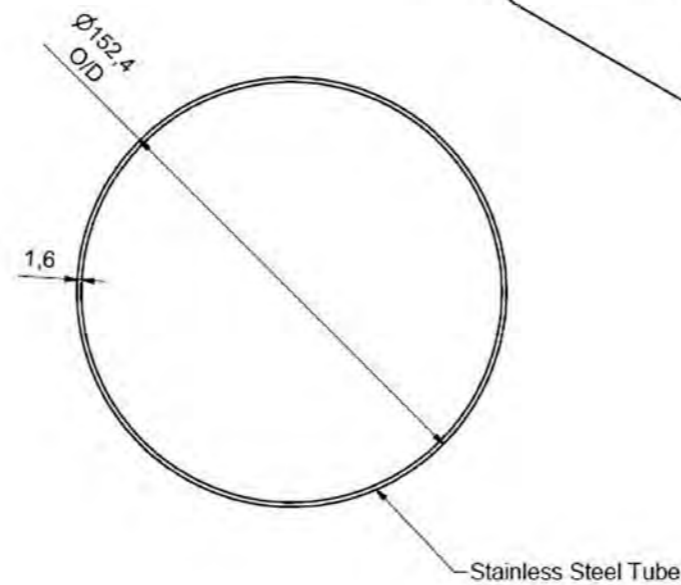
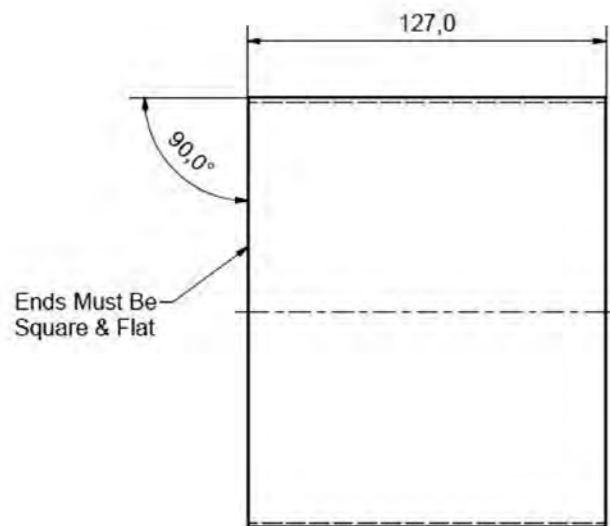
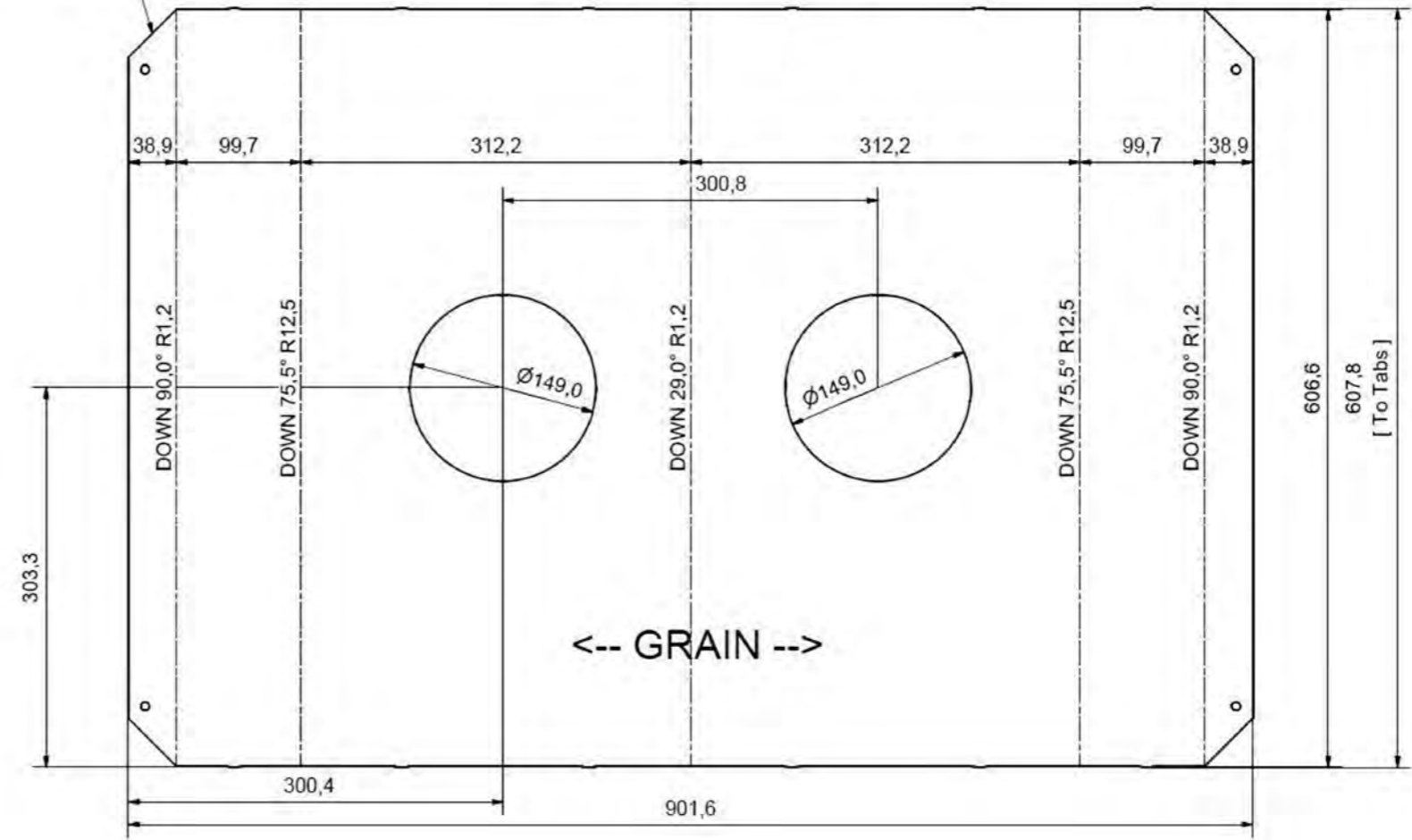
INFRASTRUCTURE PLANNING

SD1003-B SHEET 2 of 9



NOTE: 2 Folds Have R12.5

38,8 X 45,0° Chamfer



2off / Unit

Note:  
Finish: #4  
Material: SS 304 #4

Remove all burrs and sharp edges  
No scratches



**GREATER DANDENONG**

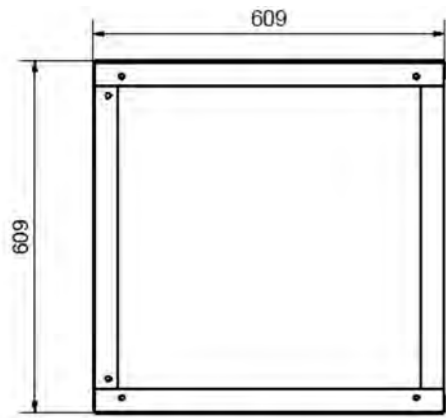
Recycle bin - 120lts  
Lid Assembly and Recycle Chute

LAST UPDATED - SEPTEMBER 2022

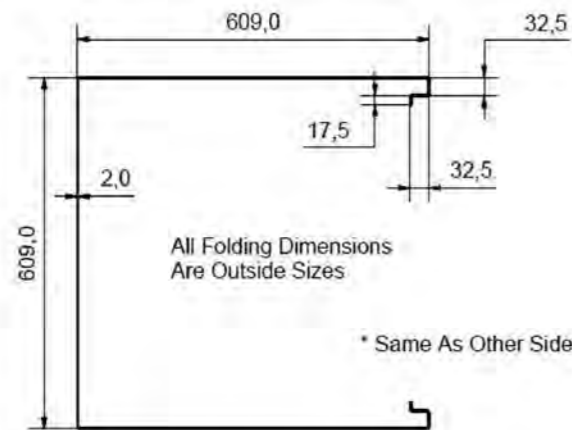
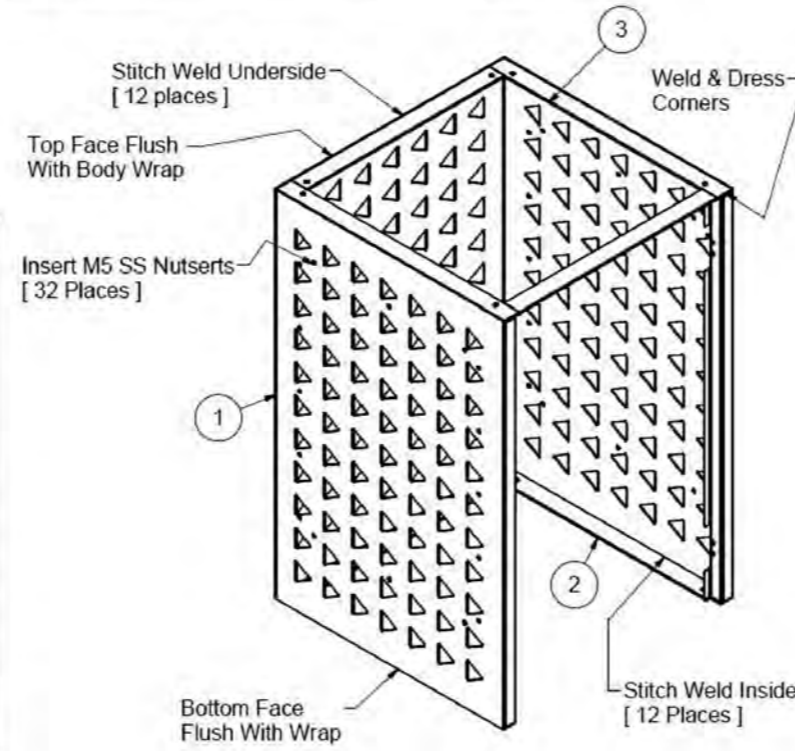
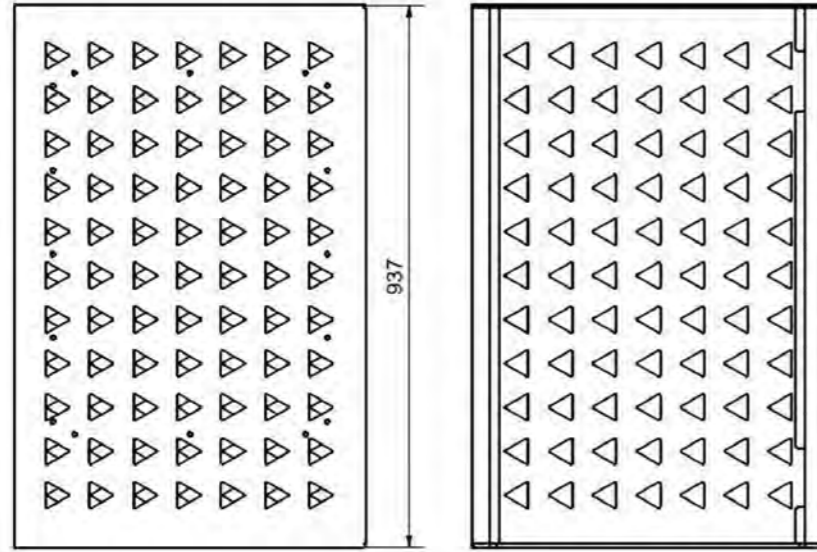
Units in mm

INFRASTRUCTURE PLANNING

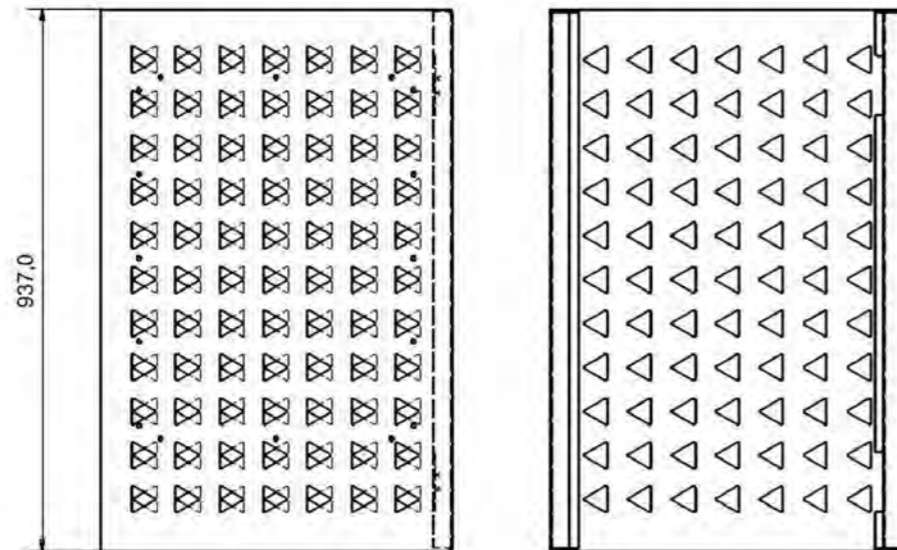
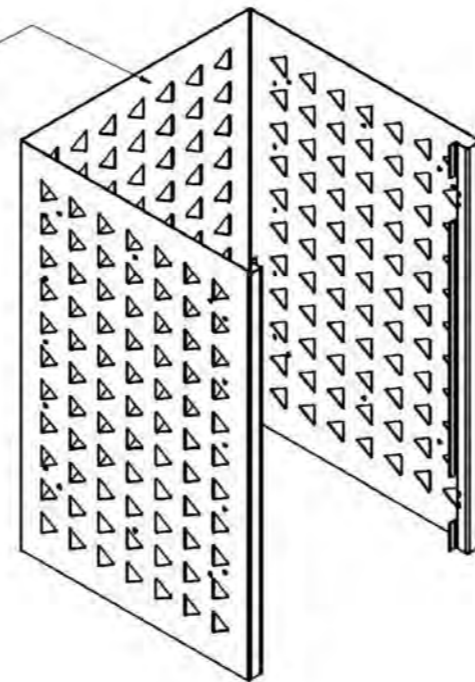
SD1003-B SHEET 3 of 9



Parts List					
ITEM	QTY	PART NUMBER	Flat Length	Flat Width	Thickness
1	1	Litter Bin Surround - Body Wrap	1965,7 mm	937,0 mm	2.000 mm
2	1	Litter Bin Surround - Bottom Frame Assembly			5.000 mm
3	1	Litter Bin Surround - Top Frame Assembly			5.000 mm



Check Top & Bottom Frames Fit Inside Body Wrap



Note:  
Finish: Powdercoat Charcoal  
Material: Galvanised

Remove all burrs and sharp edges  
No scratches



**GREATER DANDENONG**

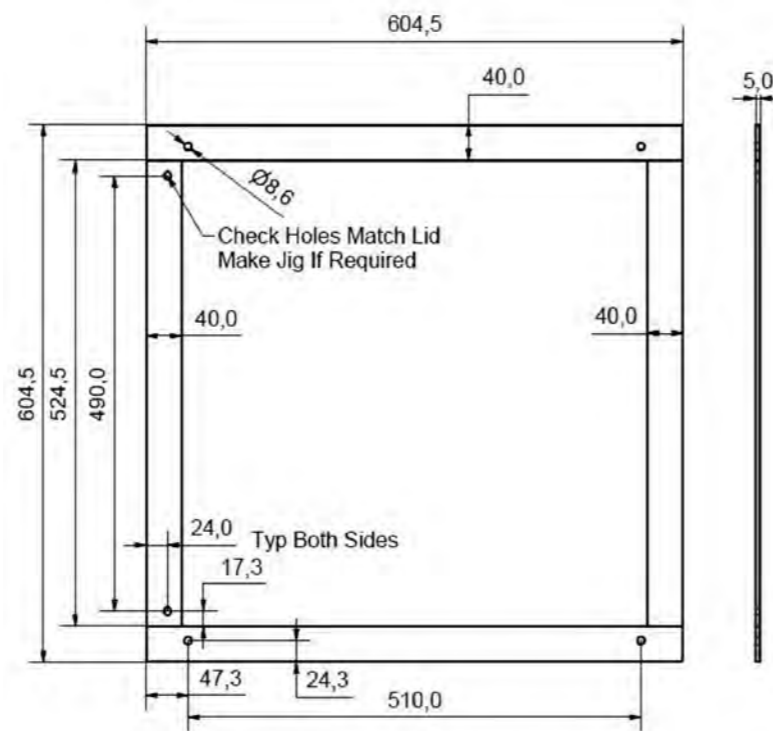
Recycle bin - 120lts  
Bin surround - Body wrap

LAST UPDATED - SEPTEMBER 2022

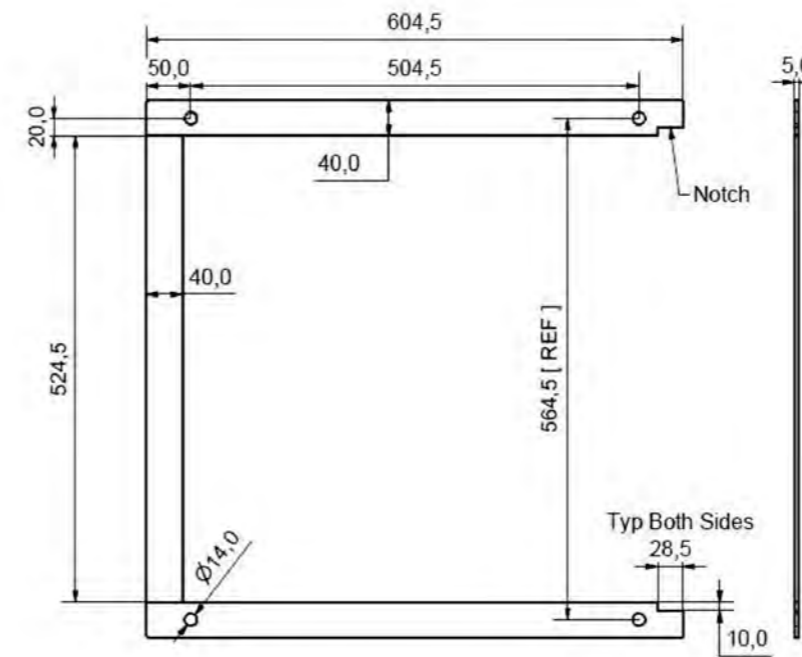
Units in mm

INFRASTRUCTURE PLANNING

SD1003-B SHEET  
4 of 9



Top Frame



Bottom Frame

Prepare Edges As Appropriate Then  
Weld & Dress Flush Both Frames  
Check Frames Fit Inside Body Wrap

Note:  
Finish: Powdercoat Charcoal  
Material: Galvanised

Remove all burrs and sharp edges  
No scratches



**GREATER DANDENONG**

Recycle bin - 120lts  
Top and bottom frames

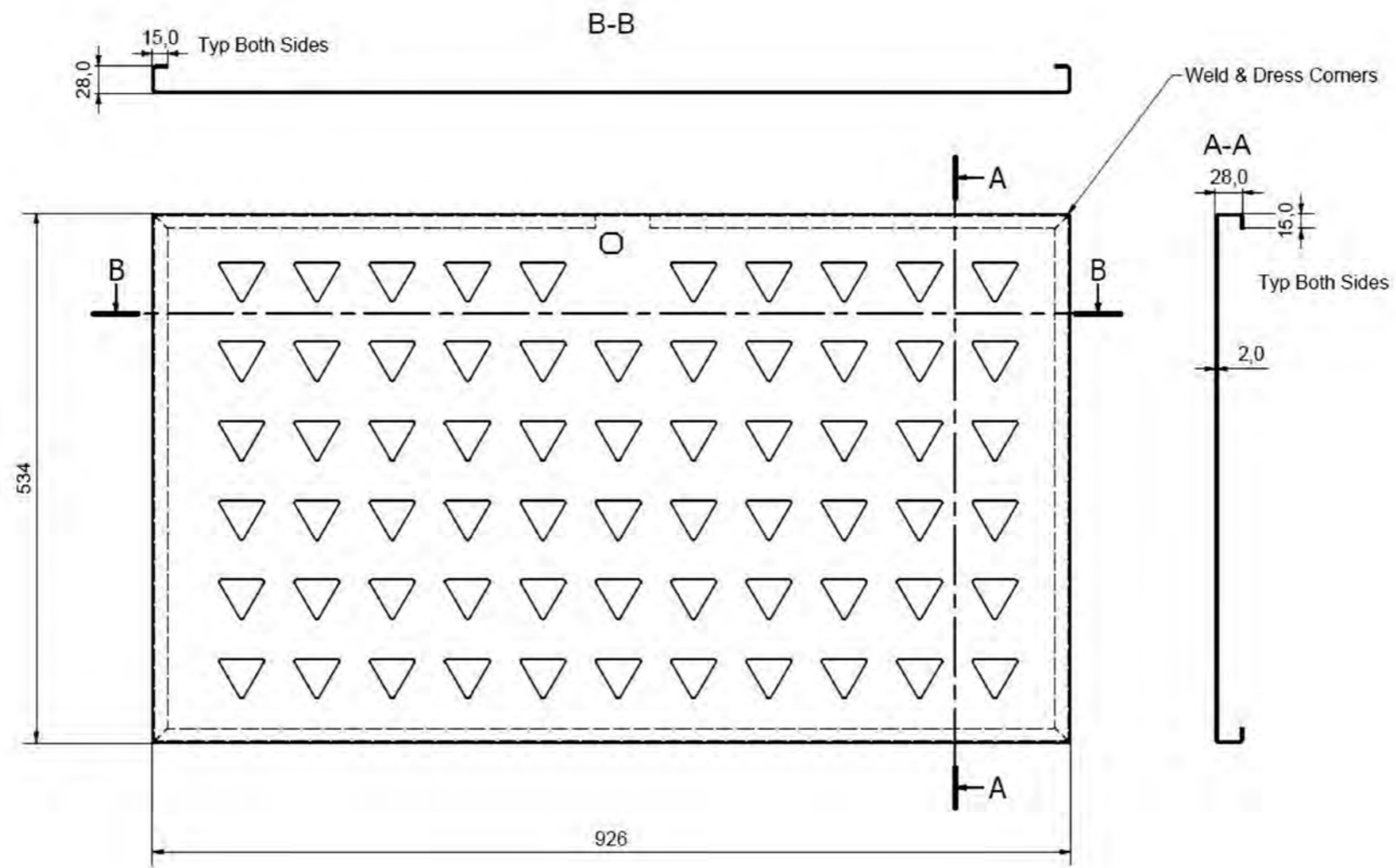
LAST UPDATED - SEPTEMBER 2022

Units in mm

INFRASTRUCTURE PLANNING

SD1003-B SHEET  
5 of 9





Note:  
 Finish: Powdercoat Charcoal  
 Material: Galvanised

Remove all burrs and sharp edges  
 No scratches



**GREATER DANDENONG**

Recycle bin - 120Lts  
 Door

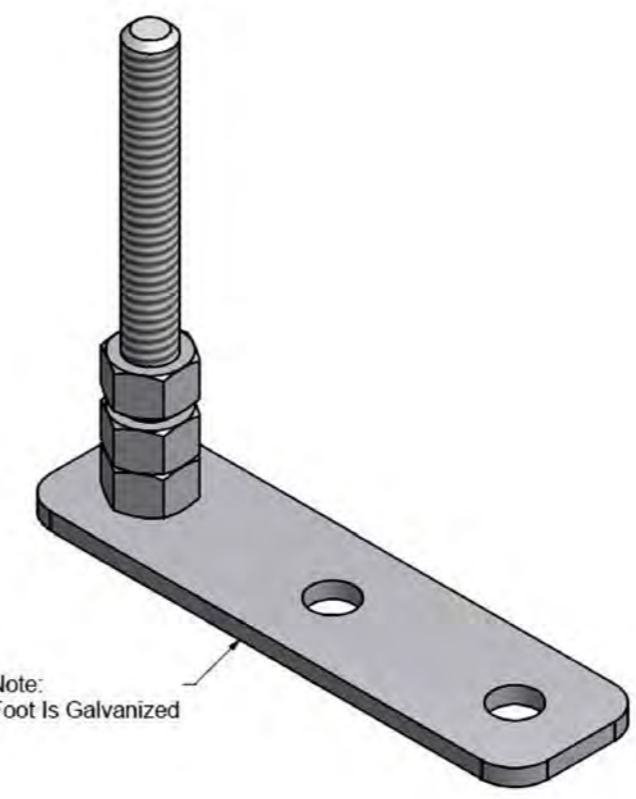
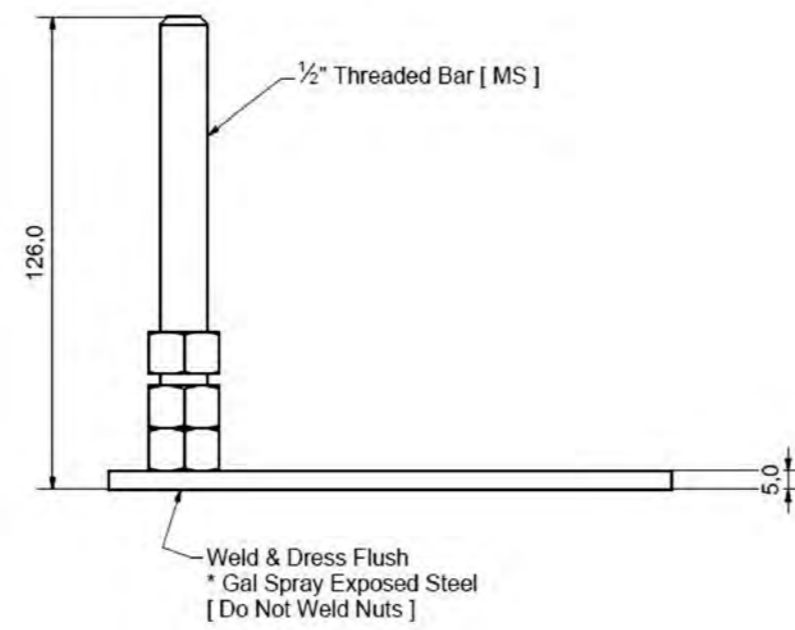
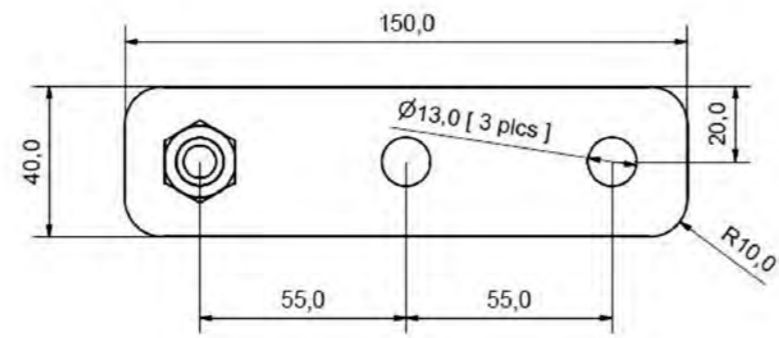
LAST UPDATED - SEPTEMBER 2022

Units in mm

INFRASTRUCTURE PLANNING

SD1003-B SHEET  
 6 of 9



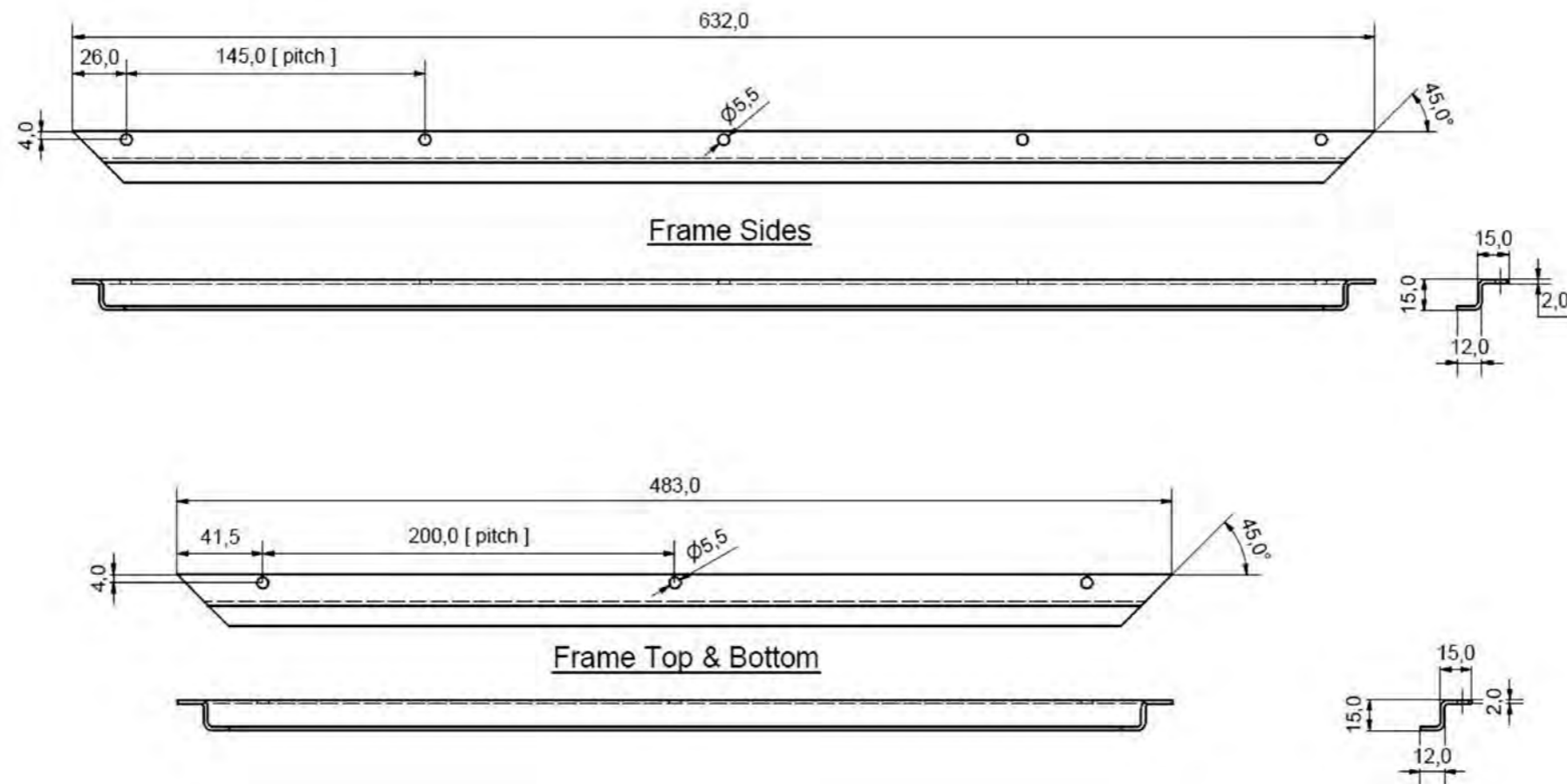


Note:  
Foot Is Galvanized

Parts List					
ITEM	QTY	PART NUMBER	Flat Length	Flat Width	Thickness
1	1	Litter Bin Surround - Foot Plate	150,0 mm	40,0 mm	5,000 mm
2	1	Litter Bin Surround - Threaded Bar			
3	3	1/2" Hex Nut			


Note:  
Finish: As nominated  
Material: Mid steel (see note)

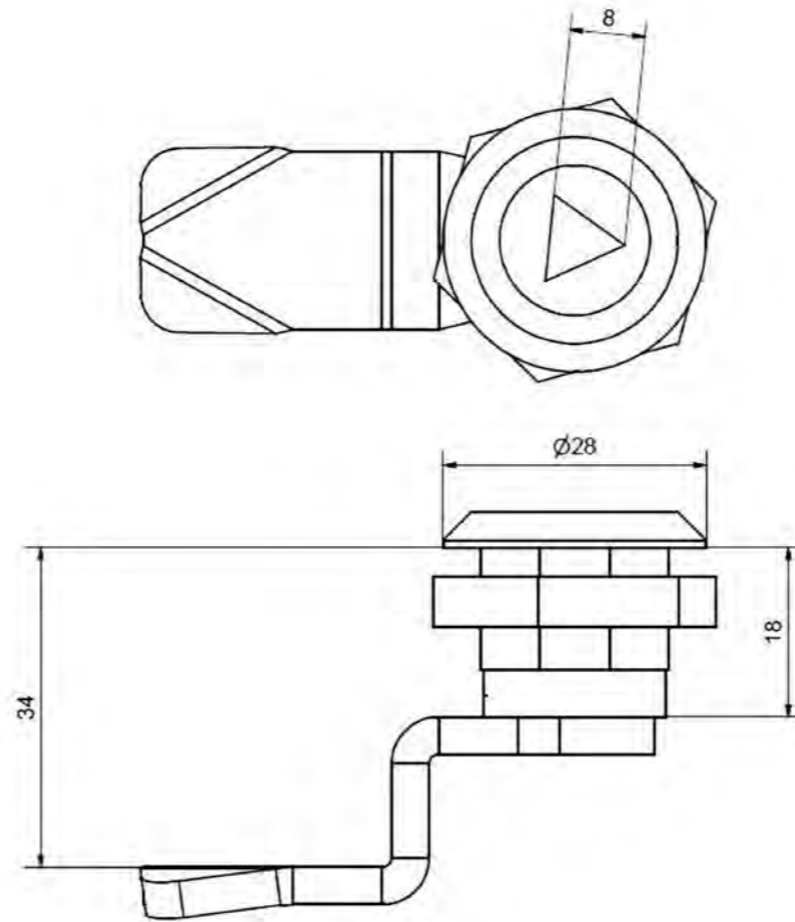
Remove all burrs and sharp edges  
No scratches



Note:  
 Finish: Powdercoat Charcoal  
 Material: Galvanised

Remove all burrs and sharp edges  
 No scratches

	GREATER DANDENONG	LAST UPDATED - SEPTEMBER 2022
	Recycle bin - 120Lts Frame Sides, Top and Bottom	Units in mm INFRASTRUCTURE PLANNING
		SD1003-B
		SHEET 8 of 9



Note:  
 Finish: Plated  
 Material: Mid steel

Remove all burrs and sharp edges  
 No scratches  
 Spring loaded catches to stop doors from being left open and becoming damaged.



**GREATER DANDENONG**

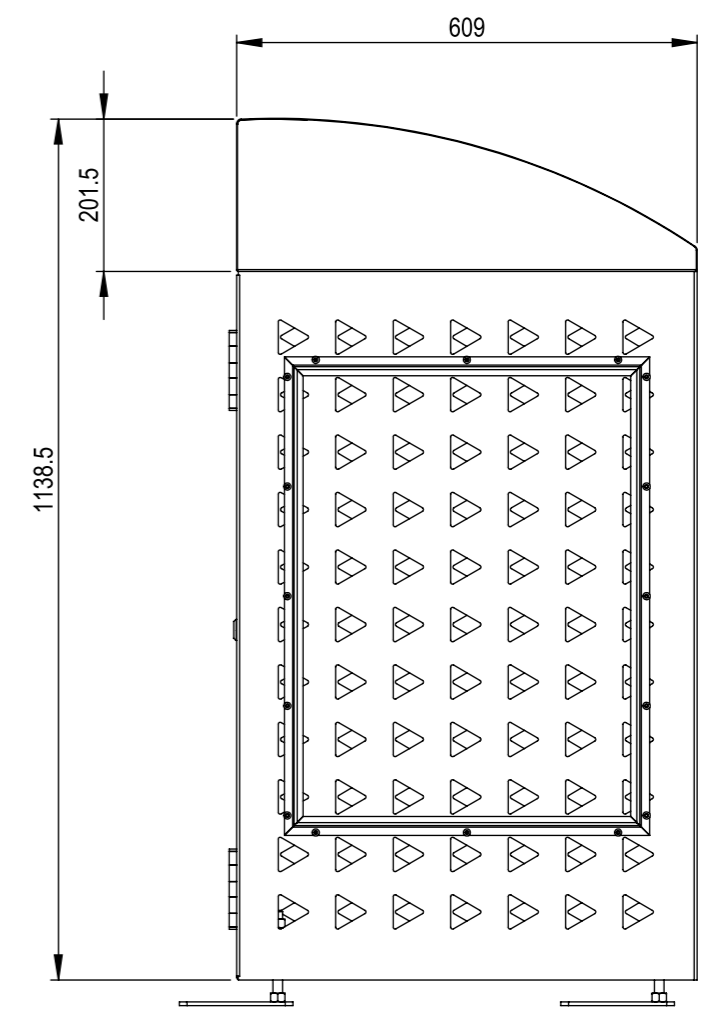
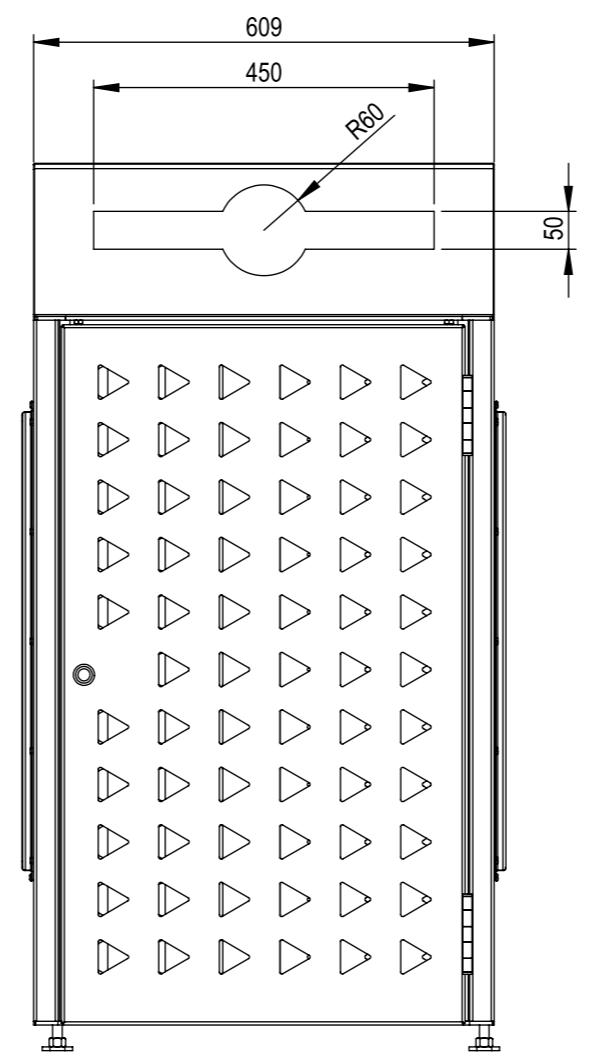
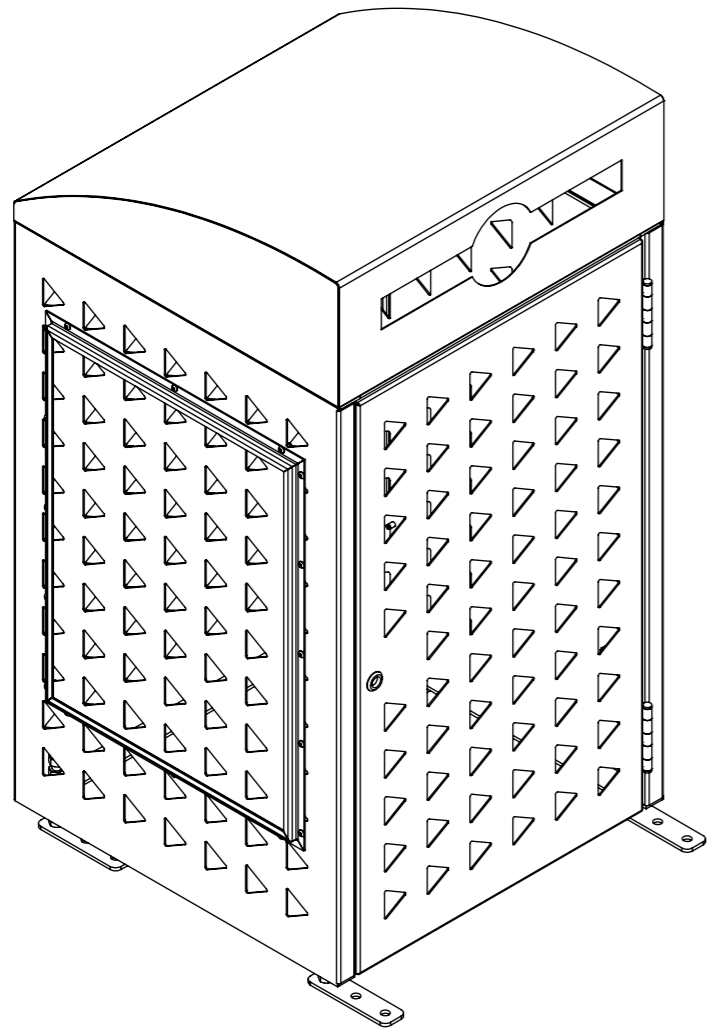
Recycle bin - 120lts  
 Lock Cam

LAST UPDATED - SEPTEMBER 2022

Units in mm

INFRASTRUCTURE PLANNING

SD1003-B SHEET  
 9 of 9



**GREATER DANDENONG**

Recycle Bin  
Front opening

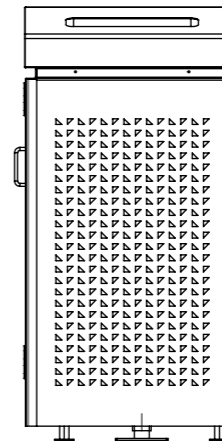
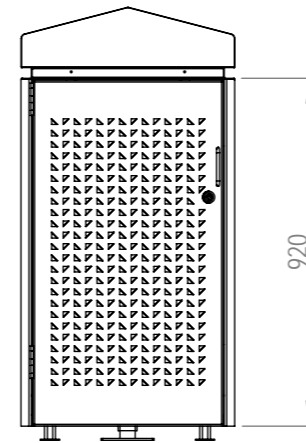
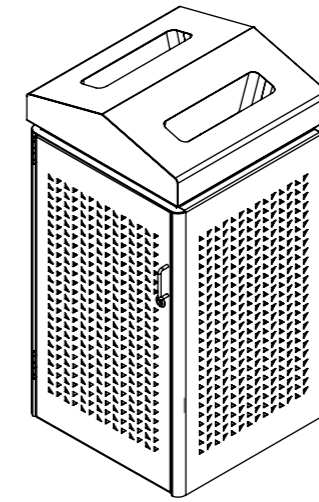
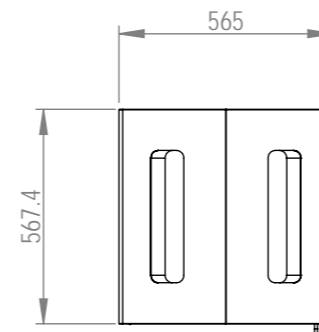
LAST UPDATED - SEPTEMBER 2022

Scale 1:10 @ A3  
Units in mm

INFRASTRUCTURE PLANNING

**SD1003-C** SHEET  
1 of 1

ITEM NO.	PART NUMBER	QTY.
1	Dandenong bin - base plate	1
2	Dandenong bin - door	1
3	Dandenong bin - lock plate	1
4	Dandenong bin - door handle	1
5	Dandenong bin - lid NON CIGARETTE	1
6	square lock (see page 1)	1
7	Dandenong bin - body	1
8	Dandenong bin - hinge - 2 cutout	2
9	Dandenong bin - hinge - 3 cutout	2
10	Dandenong bin - FLOOR MOUNTING BRKT	1
11	Dandenong bin - door lock cam	1



Note:  
 Finish: RAW  
 Material: SS 304



## GREATER DANDENONG

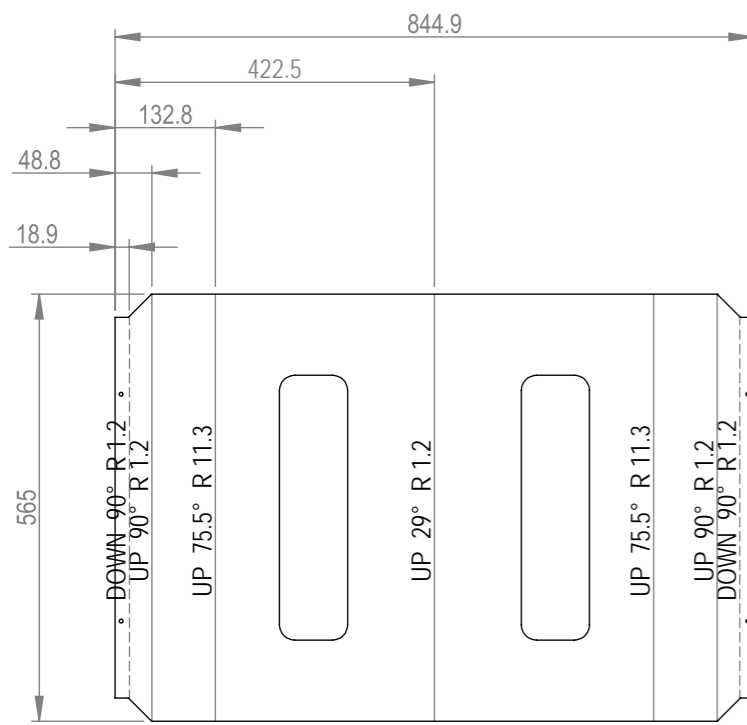
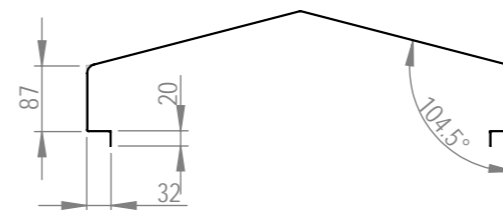
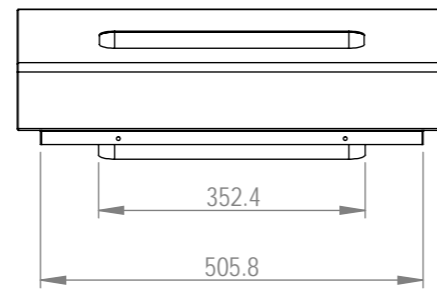
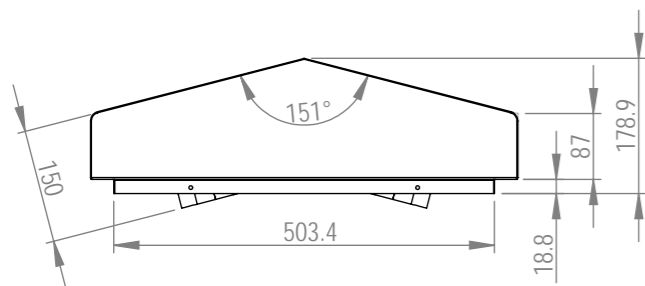
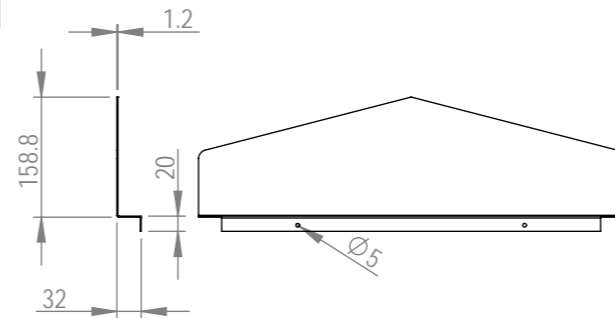
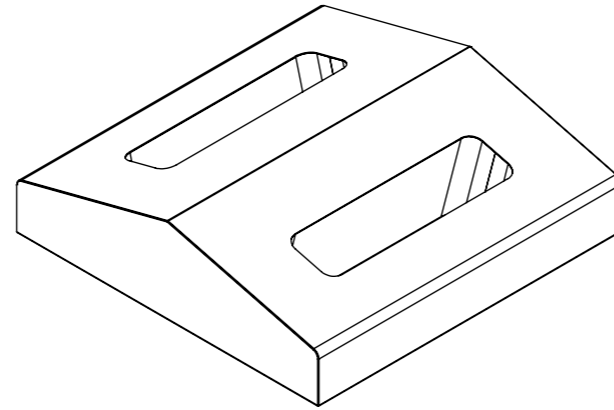
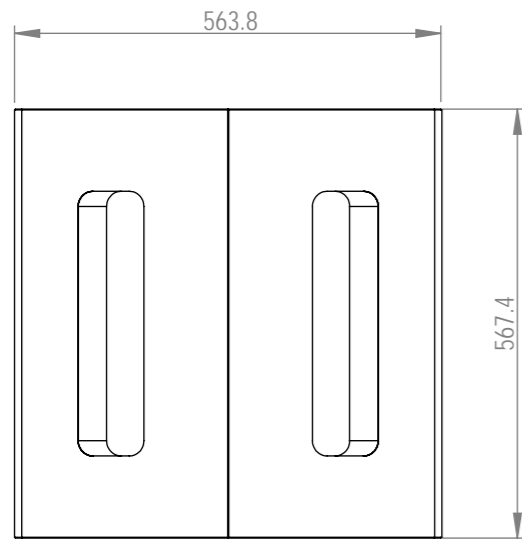
General waste bin - 80lts  
 Main Assembly

LAST UPDATED - SEPTEMBER 2022

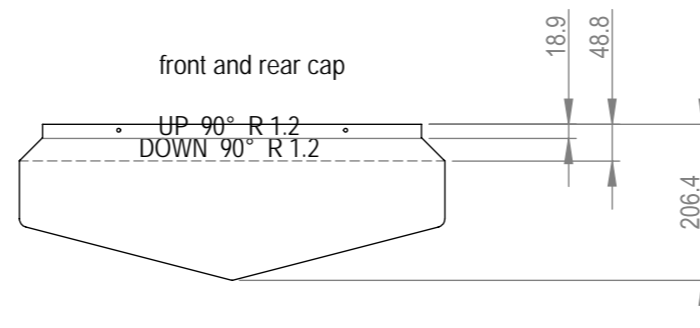
SCALE: 1:20 @ A3  
 Units in mm

INFRASTRUCTURE PLANNING

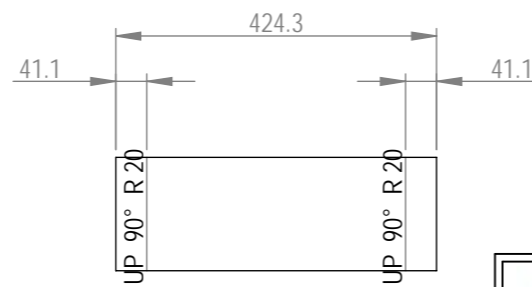
SD1003-D SHEET  
 1 of 5



lid wrap x 1 off



front and rear cap



chute x 4 off

Note:  
Finish: RAW  
Material: SS 304

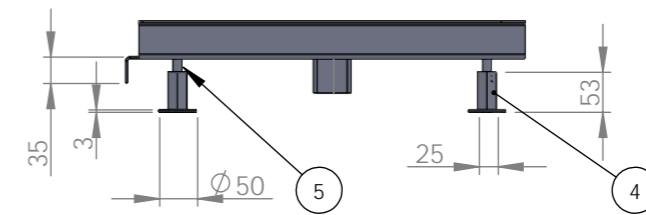
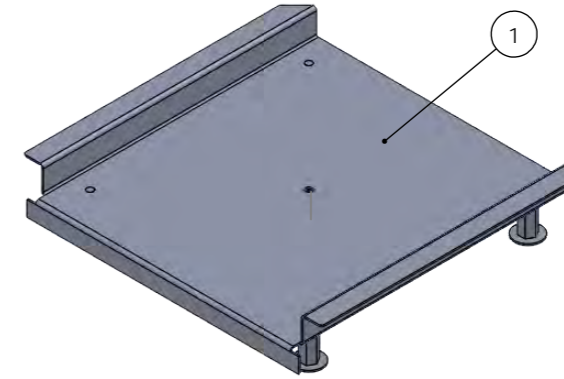
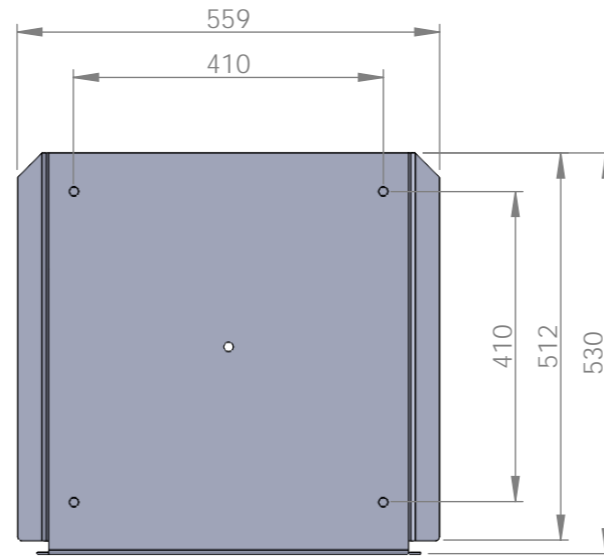
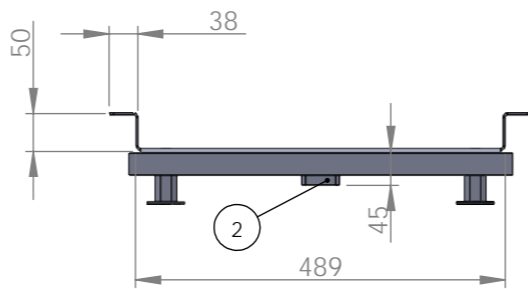
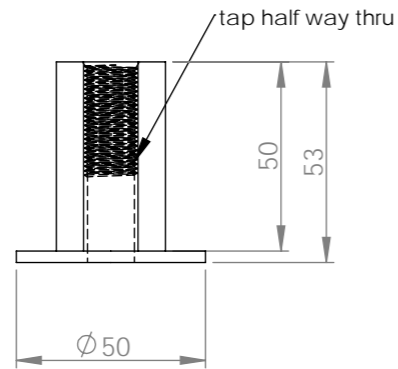
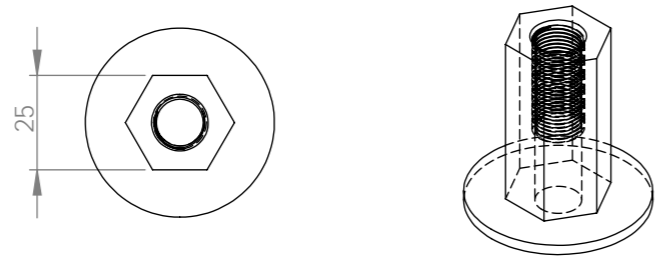


**GREATER DANDENONG**

General waste bin - 80lts  
Lid Assembly

LAST UPDATED - SEPTEMBER 2022
SCALE: 1:10 @ A3 Units in mm
INFRASTRUCTURE PLANNING
<b>SD1003-D</b> SHEET 2 of 5

ITEM NO.	QTY.	DESCRIPTION	LENGTH
1	1	Sheet	
2	1	TUBE, SQUARE 50 X 50 X 3	45
3	1	M12 screw	
4	2	adjustable foot	
5	3		
6	2		



Note:  
Finish: RAW  
Material: SS304



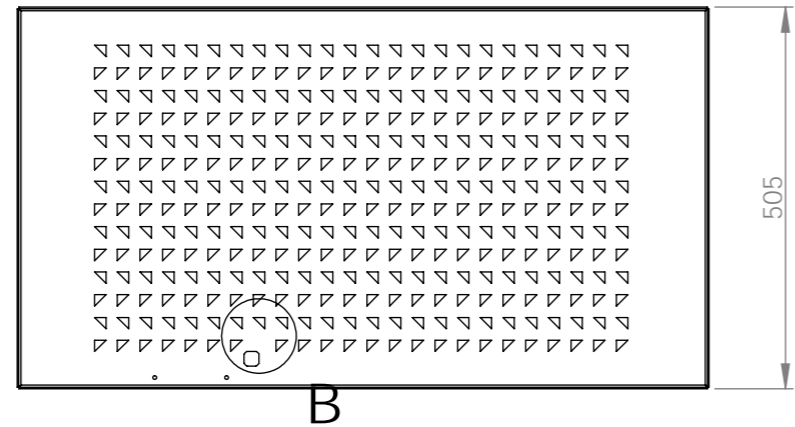
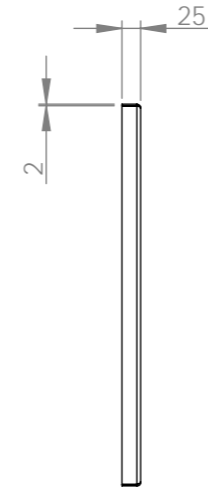
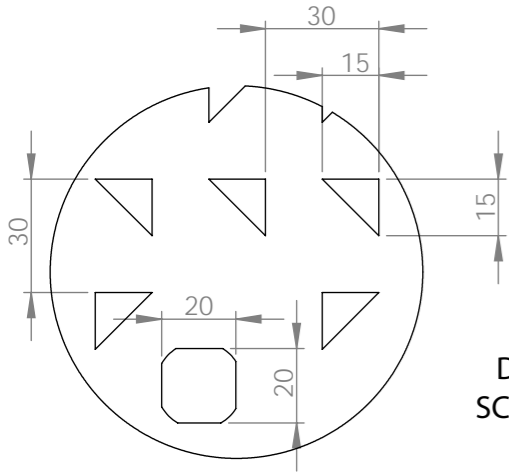
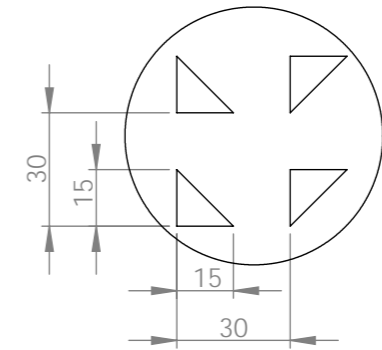
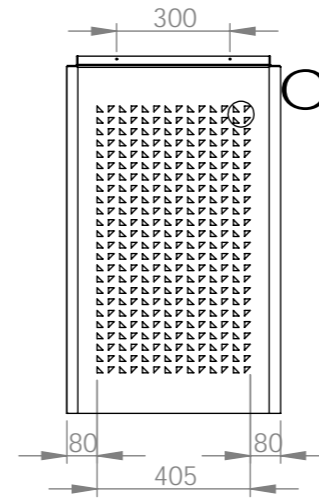
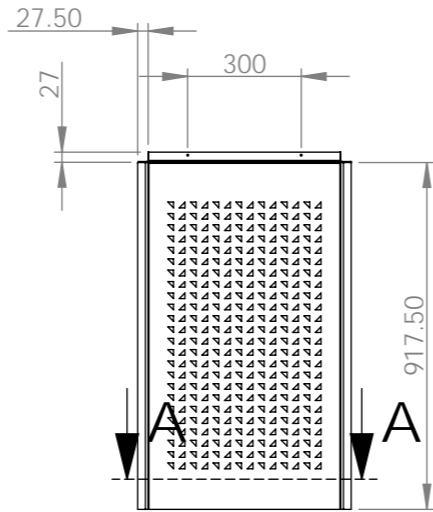
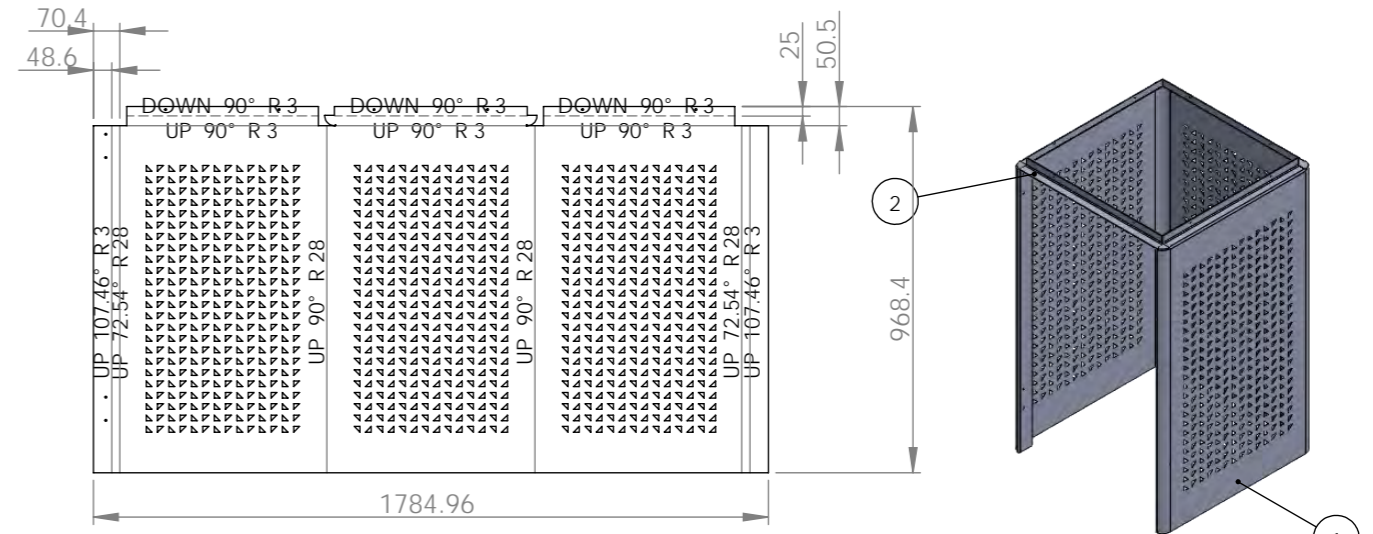
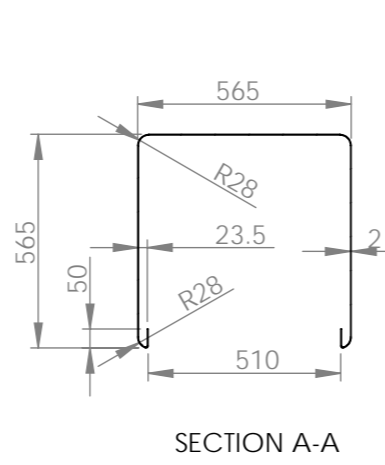
**GREATER DANDENONG**

General waste bin - 80lts  
Base plate/ ground fixing

LAST UPDATED - SEPTEMBER 2022  
SCALE: 1:20 @ A3  
Units in mm  
INFRASTRUCTURE PLANNING  
**SD1003-D** SHEET  
3 of 5



Weldment Cut List			
ITEM NO.	QTY.	DESCRIPTION	LENGTH
1	1	Sheet	
2	1	Sheet	



Note:  
Finish: RAW  
Material: SS304

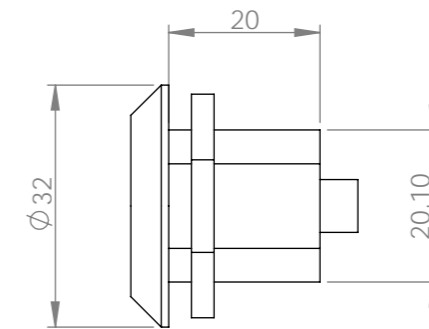
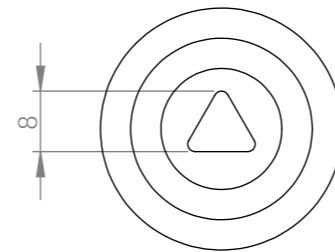
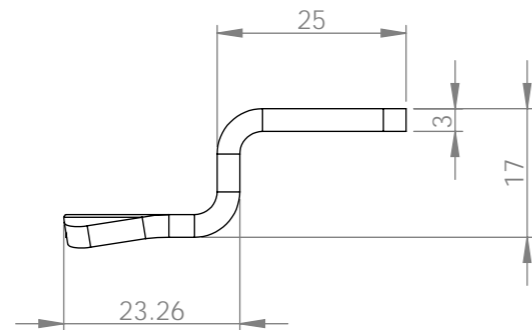
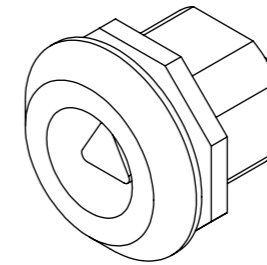
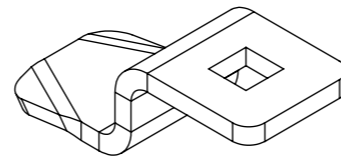
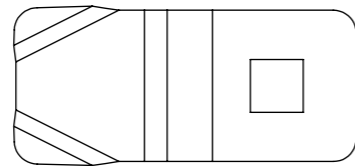


**GREATER DANDENONG**

General waste bin - 80lts  
Bin Surround - Body wrap

LAST UPDATED - SEPTEMBER 2022
SCALE: 1:20 @ A3 Units in mm
INFRASTRUCTURE PLANNING
<b>SD1003-D</b> SHEET 4 of 5





Note:  
Finish: RAW  
Material: SS304

Spring loaded catches to stop doors from being left open and becoming damaged.

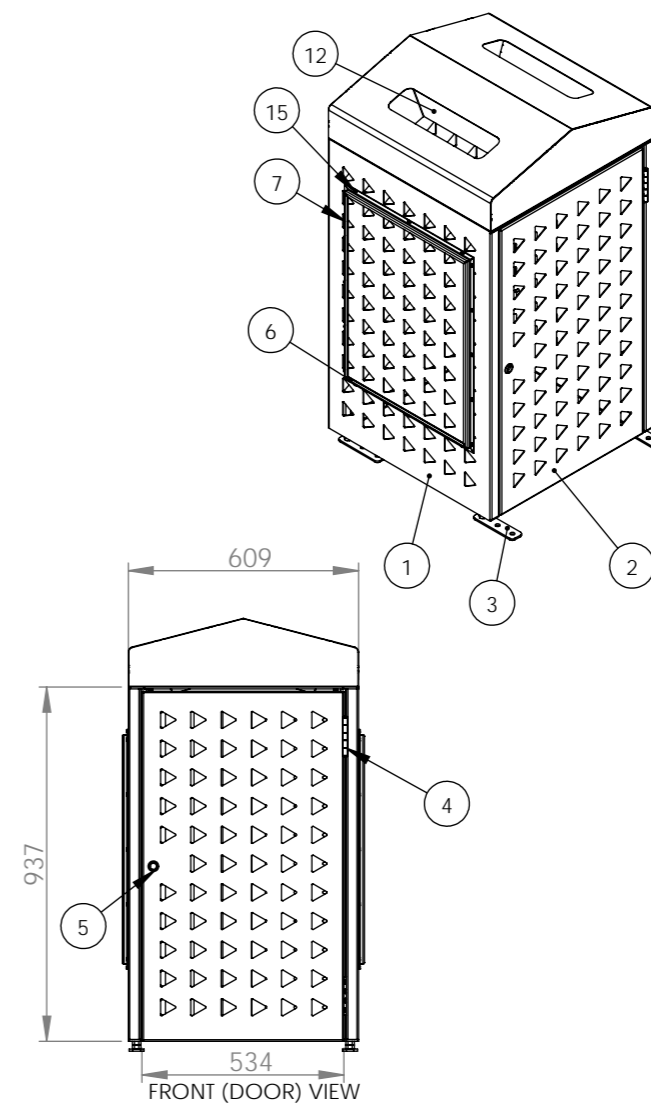
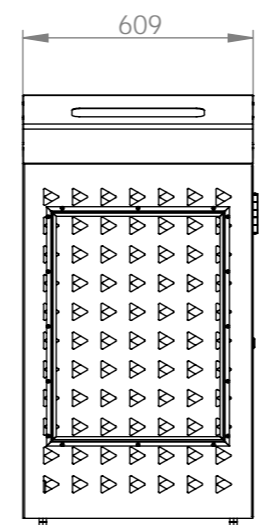
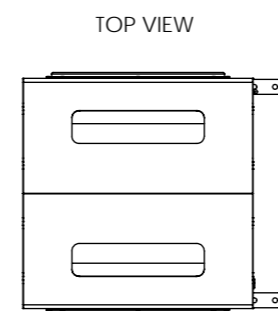


**GREATER DANDENONG**

General waste bin - 80lts  
Lock Cam

LAST UPDATED - SEPTEMBER 2022  
SCALE: 1:20 @ A3  
Units in mm  
INFRASTRUCTURE PLANNING  
**SD1003-D** SHEET  
5 of 5

ITEM NO.	PART NUMBER	QTY.
1	Litter Bin Surround - Body Assembly	1
2	Litter Bin Surround - Door	1
3	Litter Bin Surround - Foot Assembly	4
4	Hinge SS 100x75x2.5	1
5	Latch Lock - Quarter Turn	1
6	Litter Bin Surround - Frame Top-Bottom	4
7	Litter Bin Surround - Frame Side	4
8	M5 Nutsert	32
9	AS B194 - 1_4 x 1_2-CR1 AB	8
10	IFI - I0.25 - 20(1)	8
11	Lock - CAM	1
12	Litter Bin Surround - Lid Assembly (NO SMOKE)	1
13	ANSI B18.6.4 - 1_4-20 UNC - 1(16) C	6
14	Hex Nut 1_4	6
15	ANSI B18.3.4M - M5 x 0.8 x 16(1)	32



Note:  
Finish: RAW/ Powder coated



**GREATER DANDENONG**

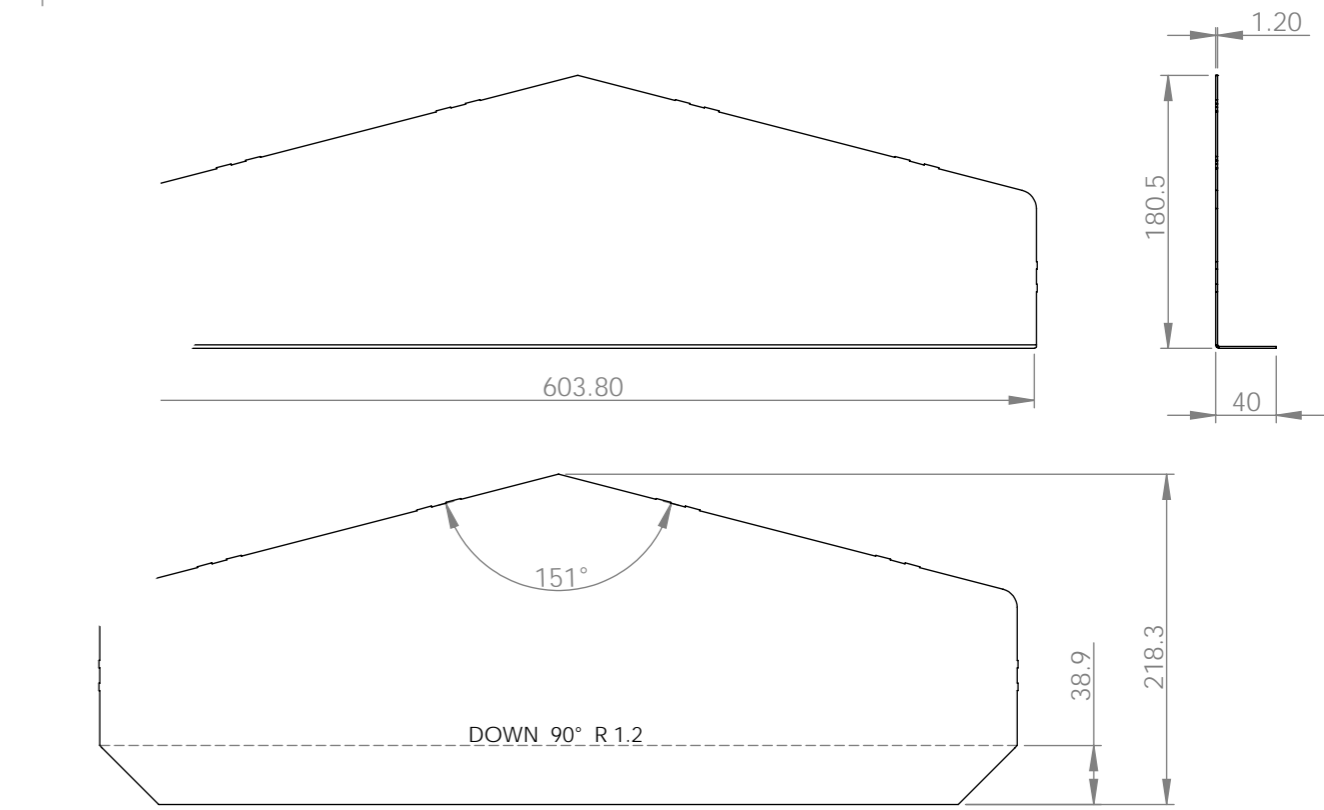
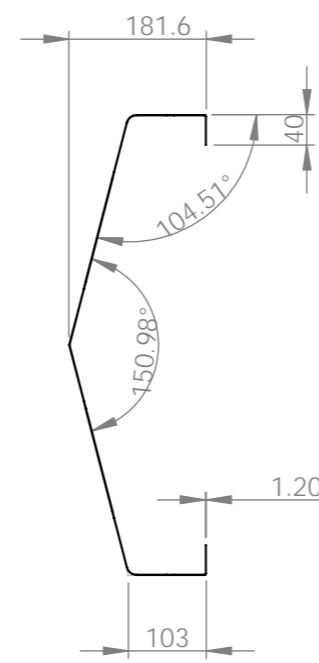
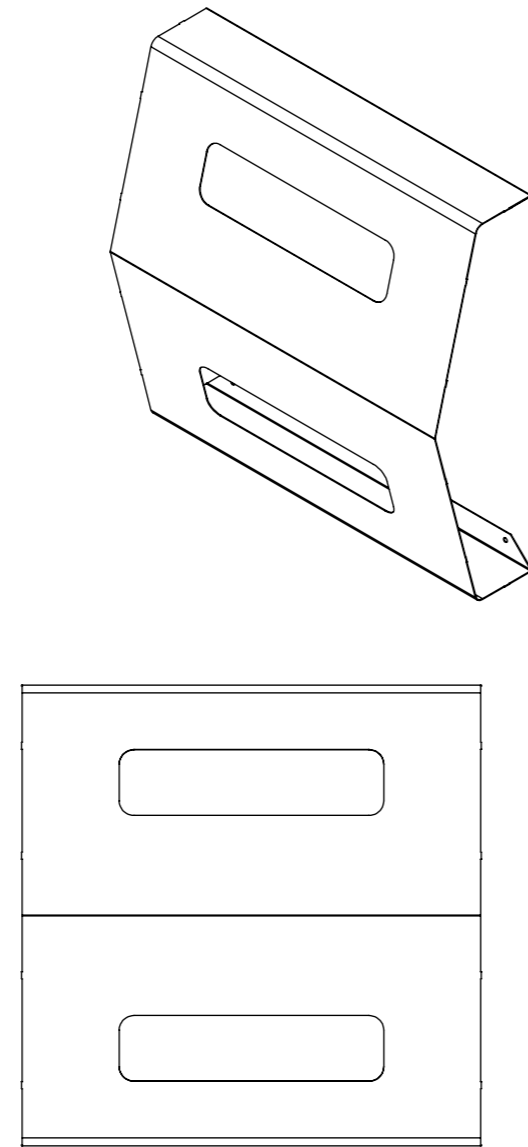
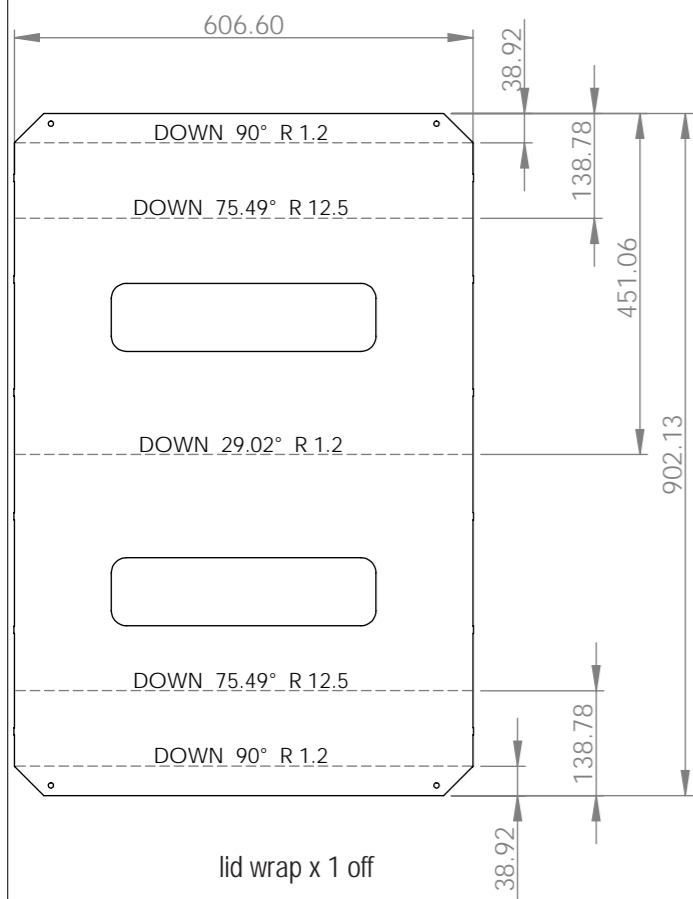
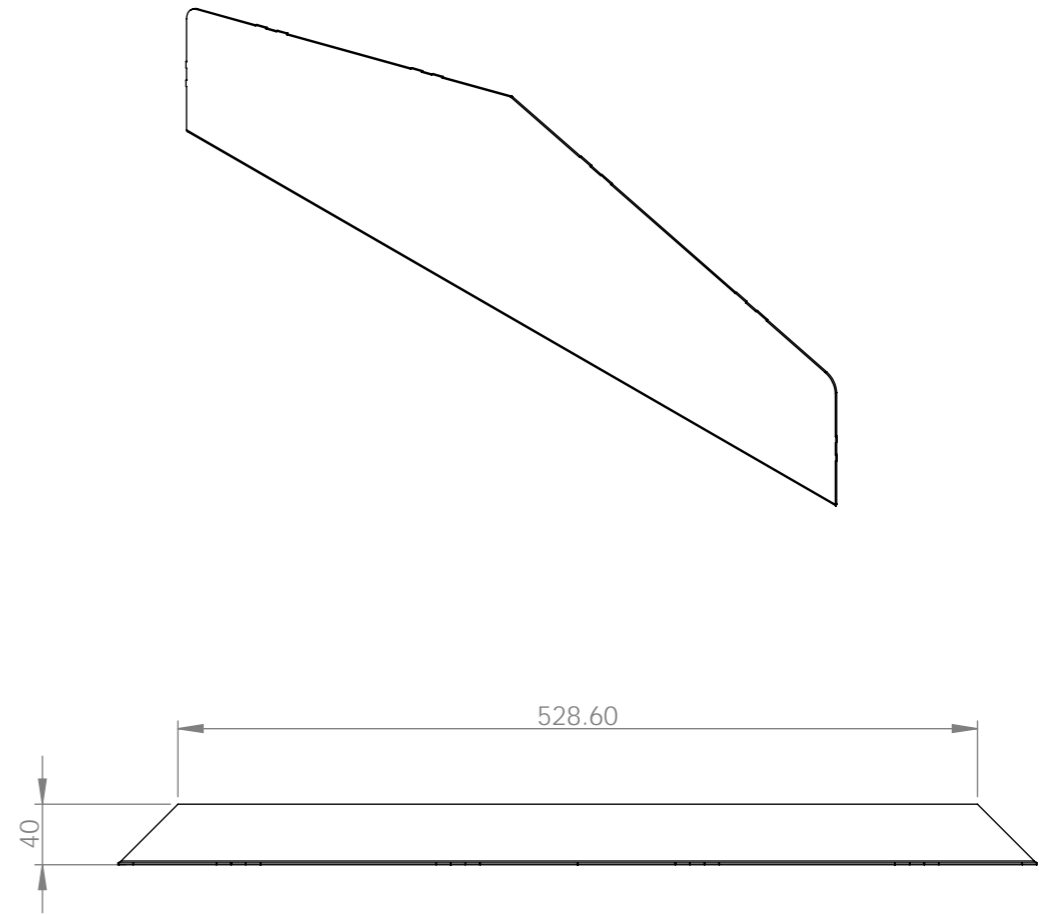
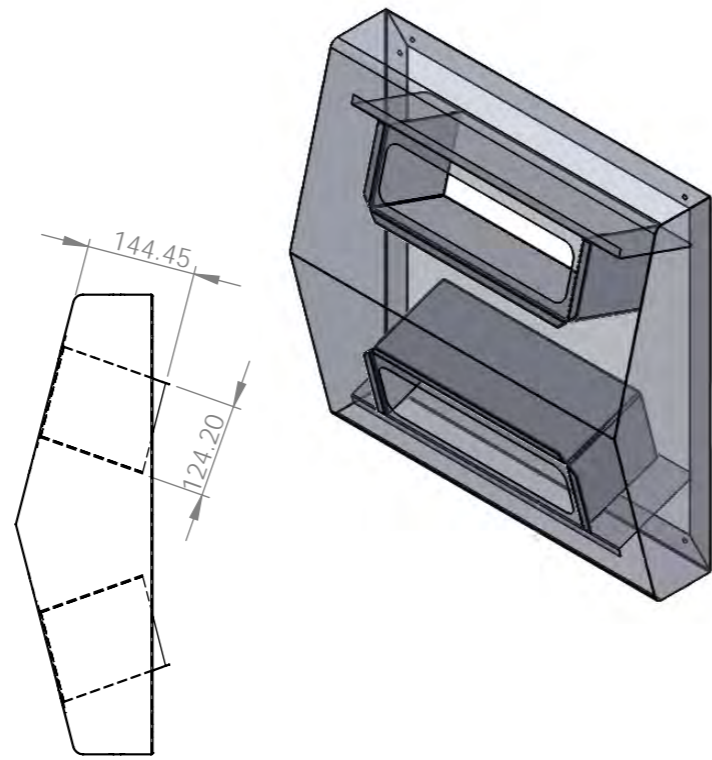
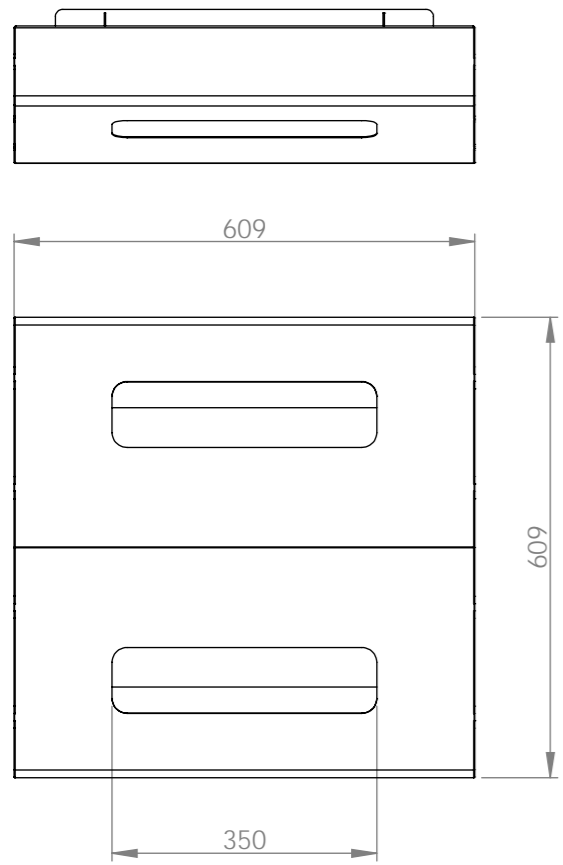
General waste bin - 120lts  
Main Assembly

LAST UPDATED - SEPTEMBER 2022

SCALE: 1:20 @ A3  
Units in mm

INFRASTRUCTURE PLANNING

SD1003-E SHEET  
1 of 10



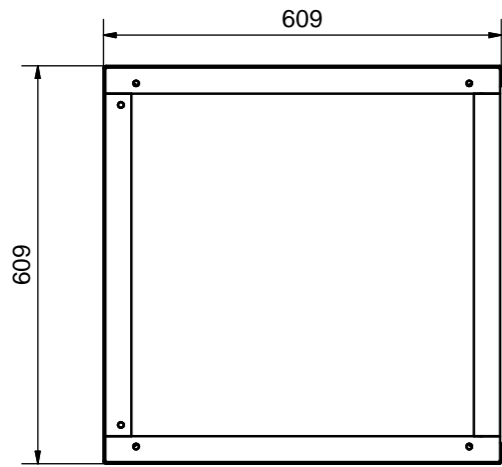
Note:  
Finish: RAW



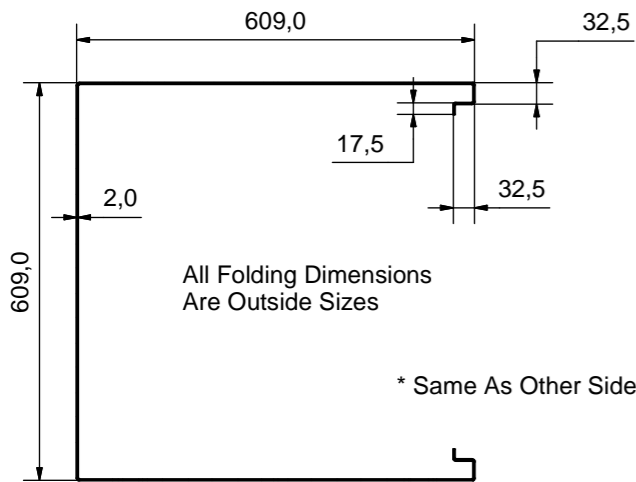
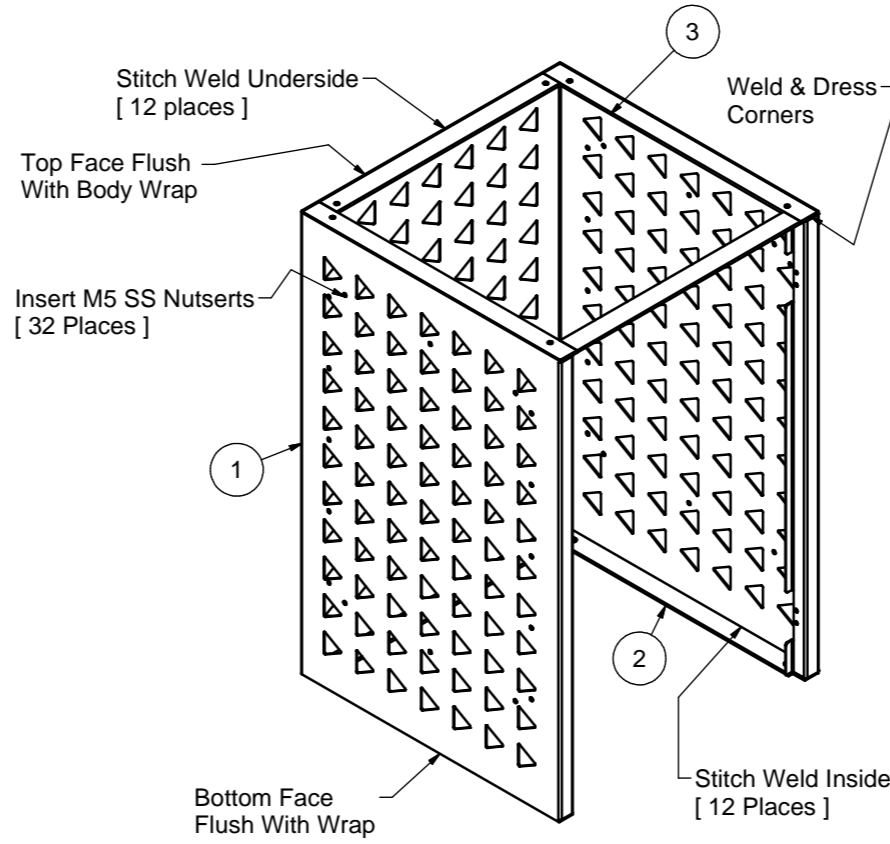
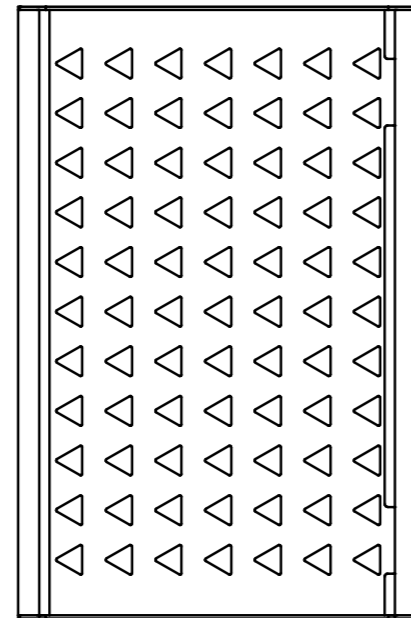
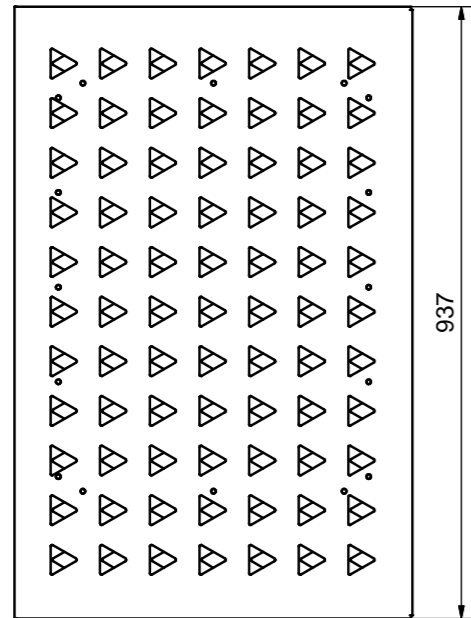
# GREATER DANDENONG

General waste bin - 120lts  
Lid Assembly

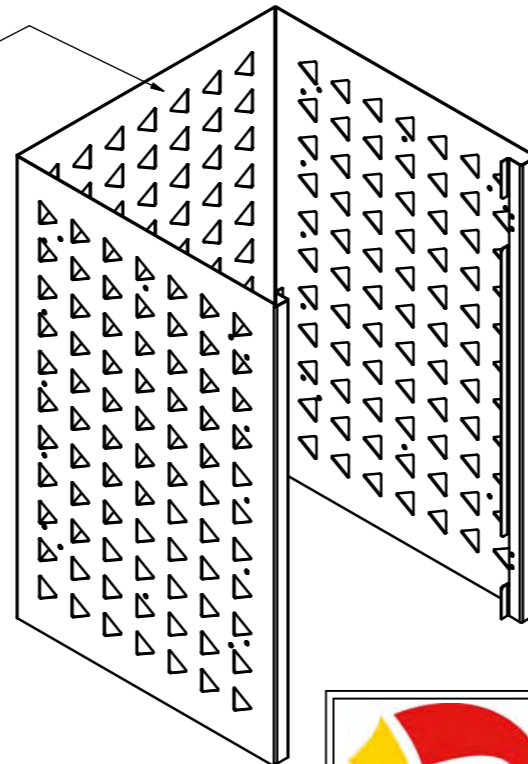
LAST UPDATED - SEPTEMBER 2022
SCALE: 1:10 @ A3 Units in mm
INFRASTRUCTURE PLANNING
SD1003-E SHEET 2 of 10



Parts List					
ITEM	QTY	PART NUMBER	Flat Length	Flat Width	Thickness
1	1	Litter Bin Surround - Body Wrap	1965,7 mm	937,0 mm	2.000 mm
2	1	Litter Bin Surround - Bottom Frame Assembly			5.000 mm
3	1	Litter Bin Surround - Top Frame Assembly			5.000 mm



Check Top & Bottom Frames  
Fit Inside Body Wrap



Note:  
Finish: Powdercoat Charcoal  
Material: Galvanised

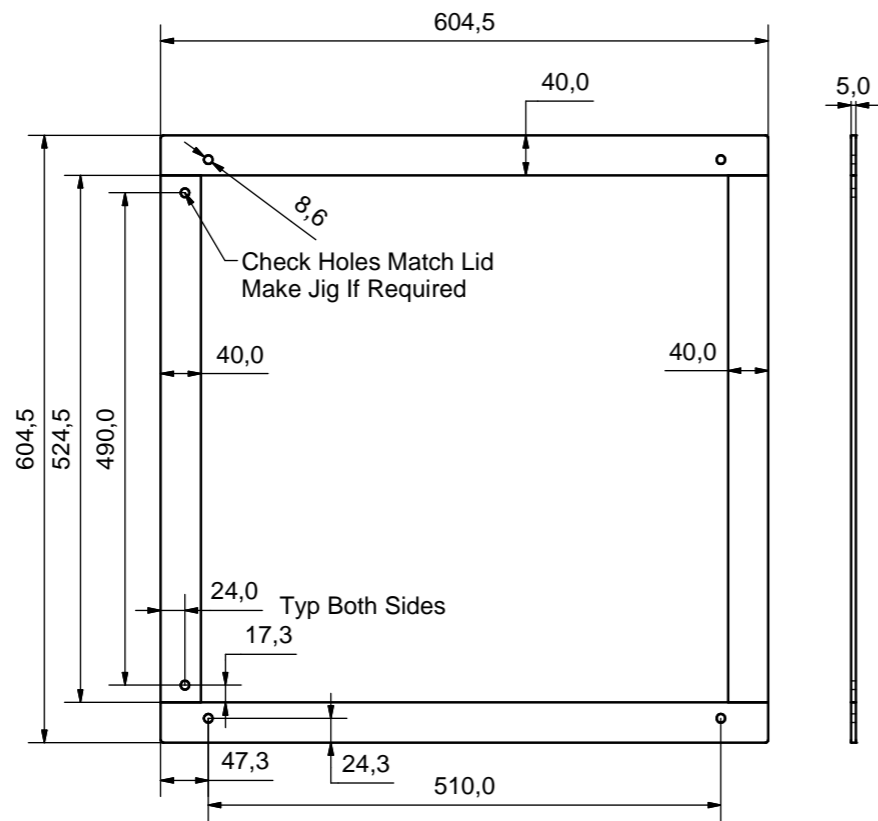
Remove all burrs and sharp edges  
No scratches



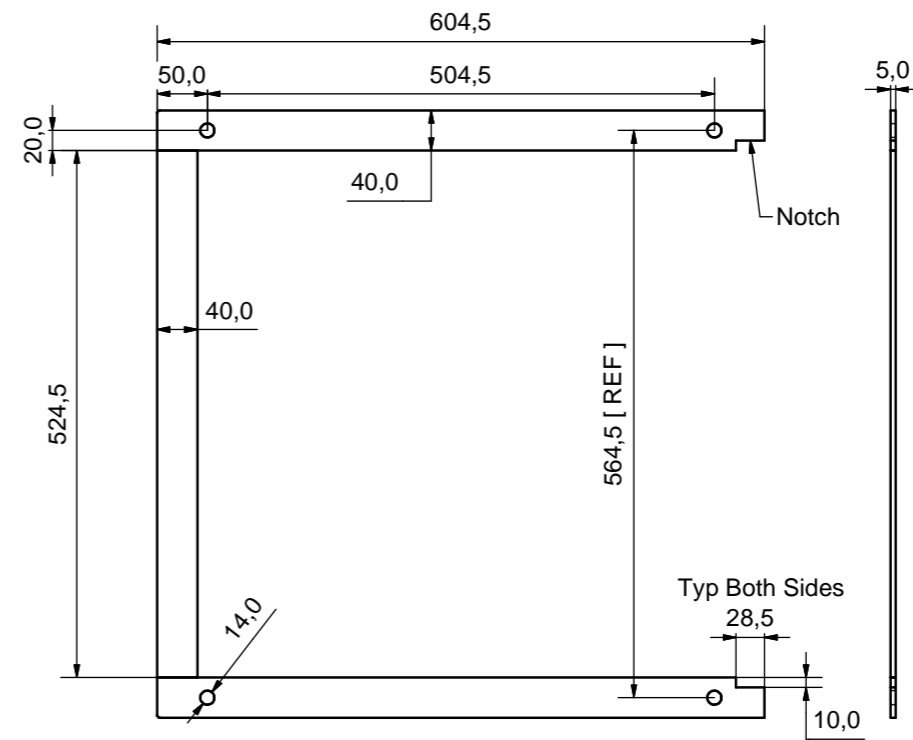
**GREATER DANDENONG**

General waste bin - 120lts  
Bin surround - Body wrap

LAST UPDATED - SEPTEMBER 2022	
Units in mm	
INFRASTRUCTURE PLANNING	
SD1003-E	SHEET 3 of 10



Top Frame



Bottom Frame

Prepare Edges As Appropriate Then  
Weld & Dress Flush Both Frames  
Check Frames Fit Inside Body Wrap

Note:  
Finish: Powdercoat Charcoal  
Material: Galvanised

Remove all burrs and sharp edges  
No scratches



**GREATER DANDENONG**

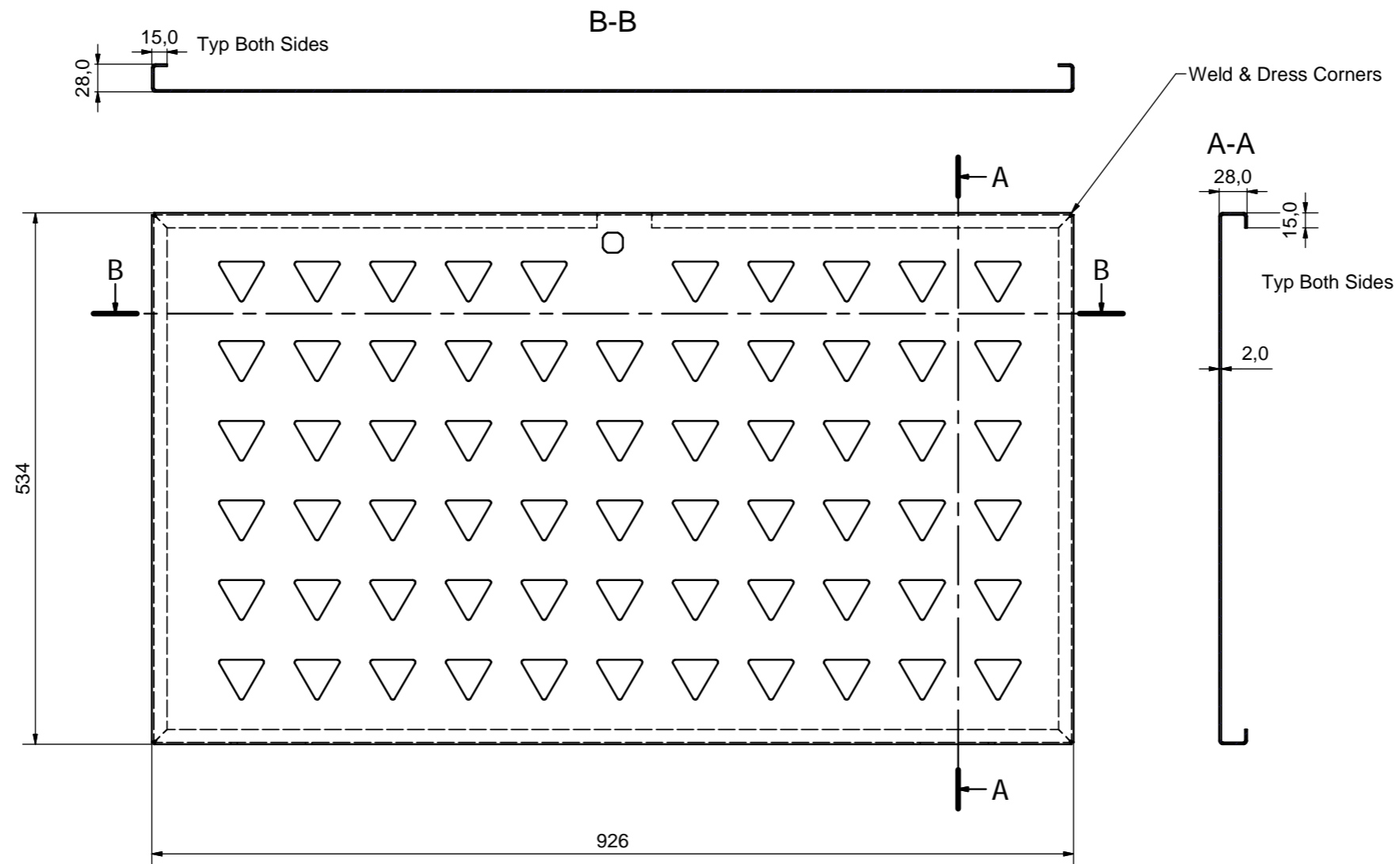
General waste bin - 120lts  
Top and bottom frames

LAST UPDATED - SEPTEMBER 2022

Units in mm

INFRASTRUCTURE PLANNING

SD1003-E SHEET  
4 of 10



Note:  
 Finish: Powdercoat Charcoal  
 Material: Galvanised

Remove all burrs and sharp edges  
 No scratches



**GREATER DANDENONG**

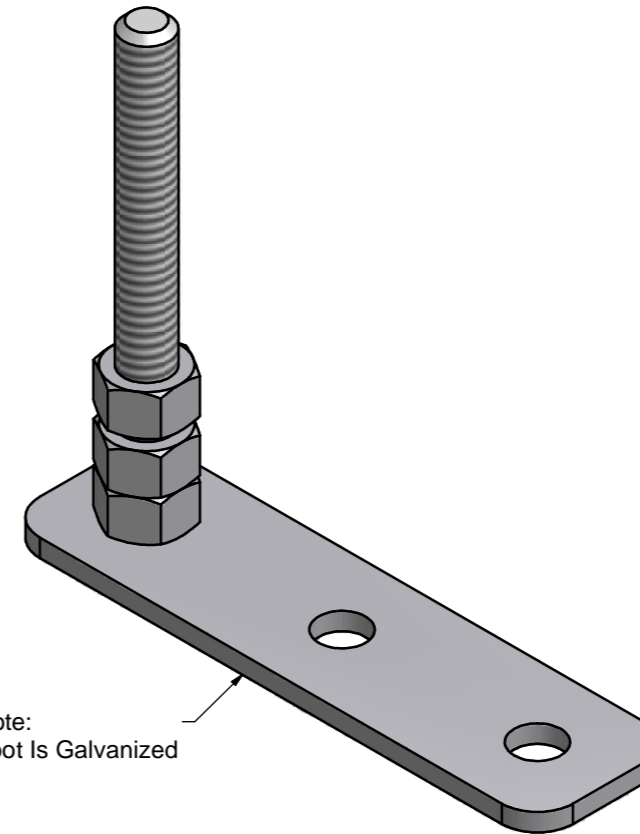
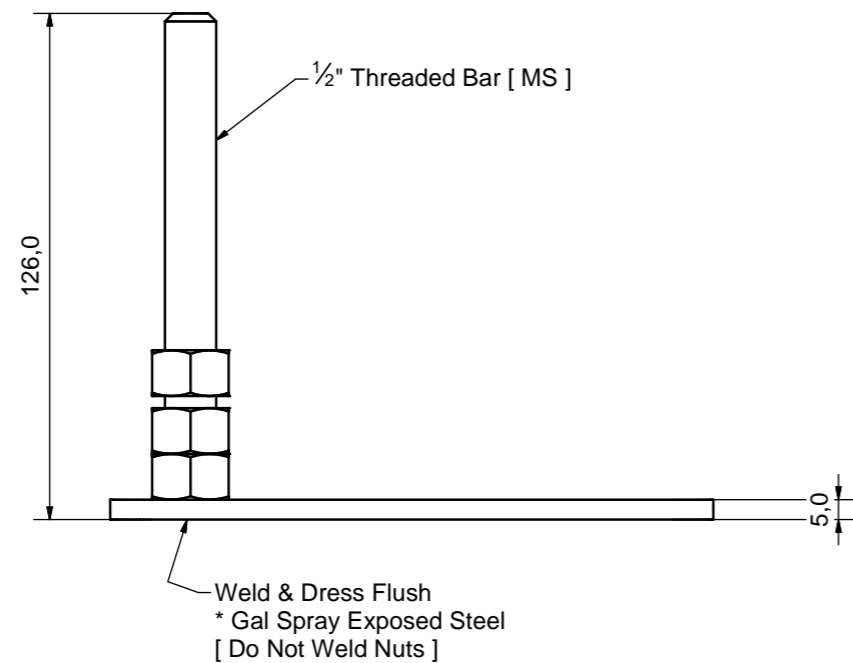
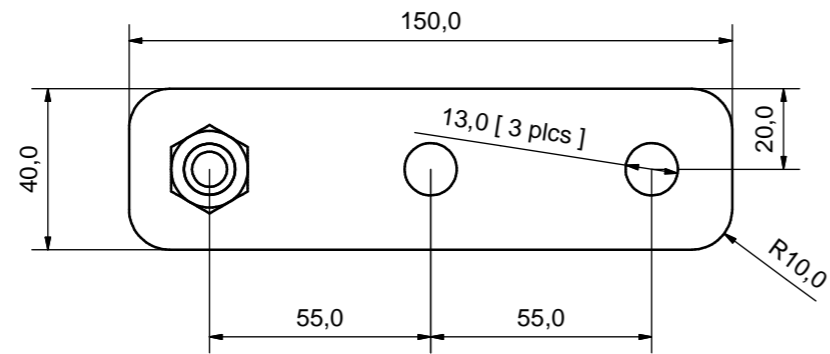
General waste bin - 120Lts  
 Door

LAST UPDATED - SEPTEMBER 2022

Units in mm

INFRASTRUCTURE PLANNING

SD1003-E SHEET  
 5 of 10



Note:  
Foot Is Galvanized

Parts List					
ITEM	QTY	PART NUMBER	Flat Length	Flat Width	Thickness
1	1	Litter Bin Surround - Foot Plate	150,0 mm	40,0 mm	5.000 mm
2	1	Litter Bin Surround - Threaded Bar			
3	3	1/2" Hex Nut			

Note:  
Finish: As nominated  
Material: Mid steel (see note)

Remove all burrs and sharp edges  
No scratches



**GREATER DANDENONG**

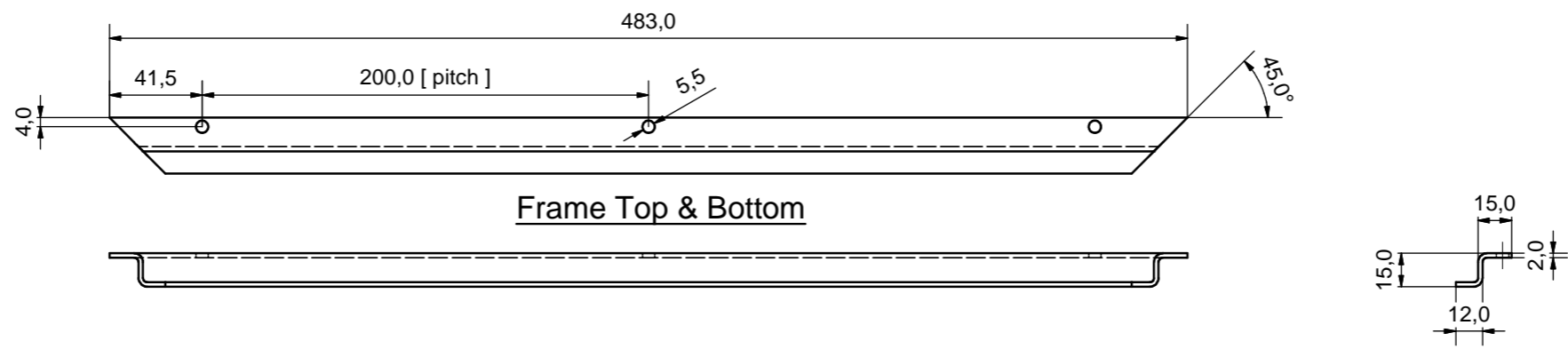
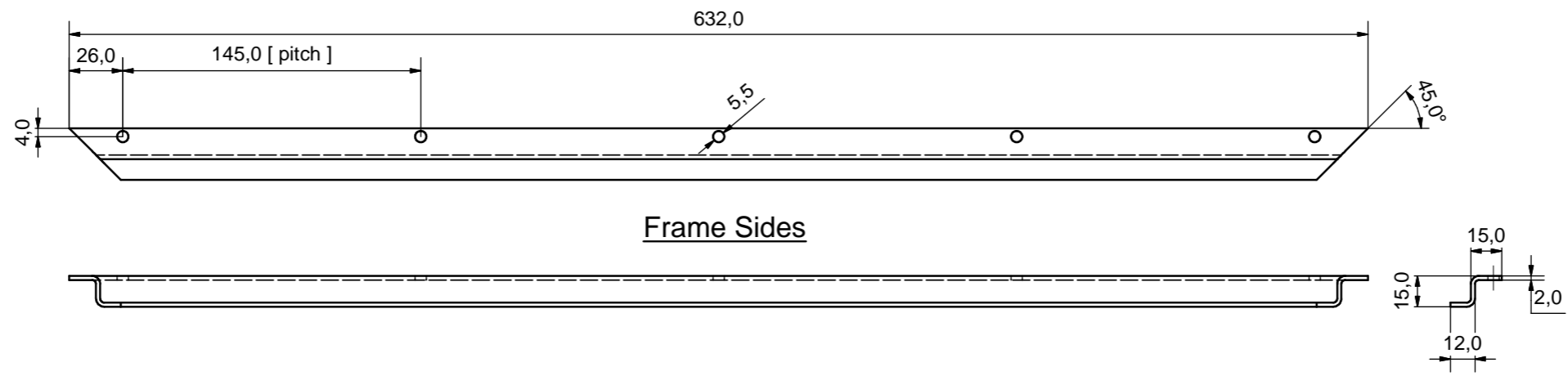
General waste bin - 120lts  
Foot assembly

LAST UPDATED - SEPTEMBER 2022

Units in mm

INFRASTRUCTURE PLANNING

SD1003-E SHEET  
6 of 10



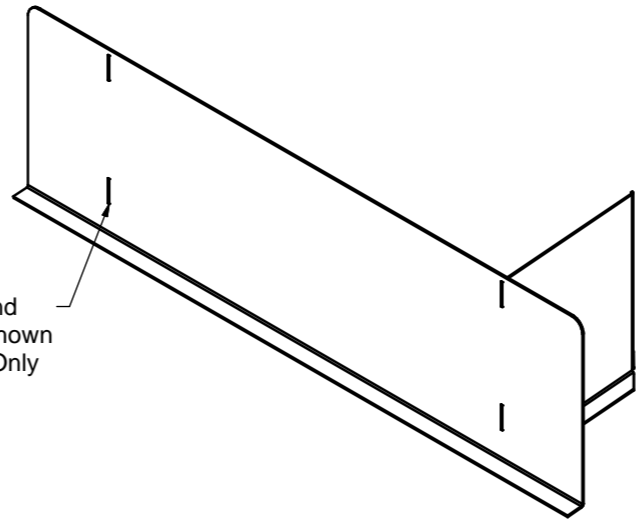
\*\*IF REQUIRED

Note:  
 Finish: Powdercoat Charcoal  
 Material: Galvanised

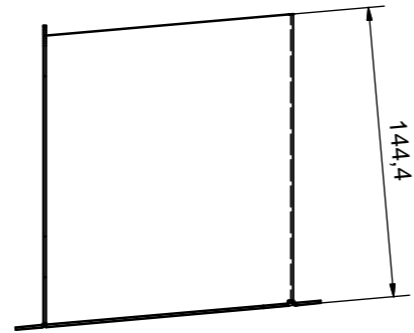
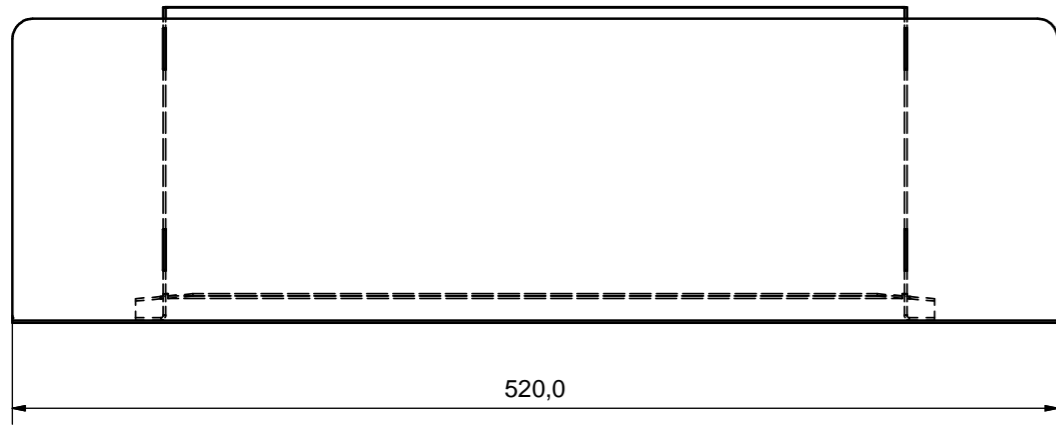
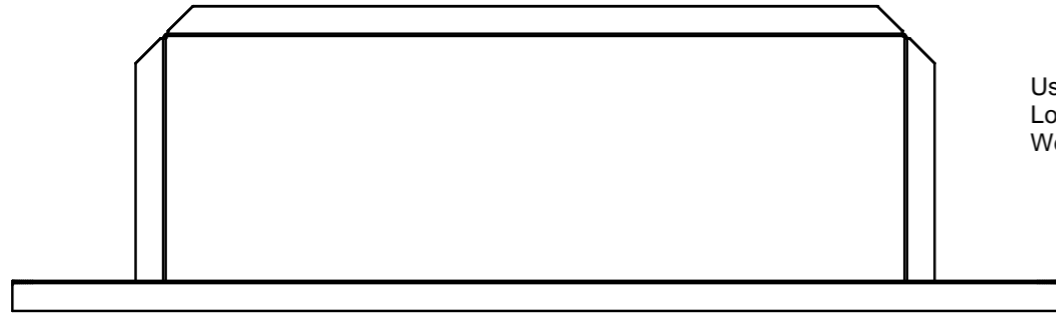
Remove all burrs and sharp edges  
 No scratches



Parts List					
ITEM	QTY	PART NUMBER	Flat Length	Flat Width	Thickness
1	1	Litter Bin Surround - Chute Body	613,8 mm	168,4 mm	1.200 mm
2	1	Litter Bin Surround - Chute Back Plate	520,0 mm	163,0 mm	1.200 mm



Use Tabs and Locate as Shown  
Weld Tabs Only



Note:  
Finish: Natural  
Material: 304 2B SS

Remove all burrs and sharp edges  
No scratches



**GREATER DANDENONG**

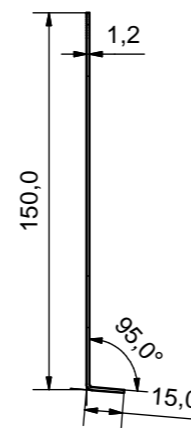
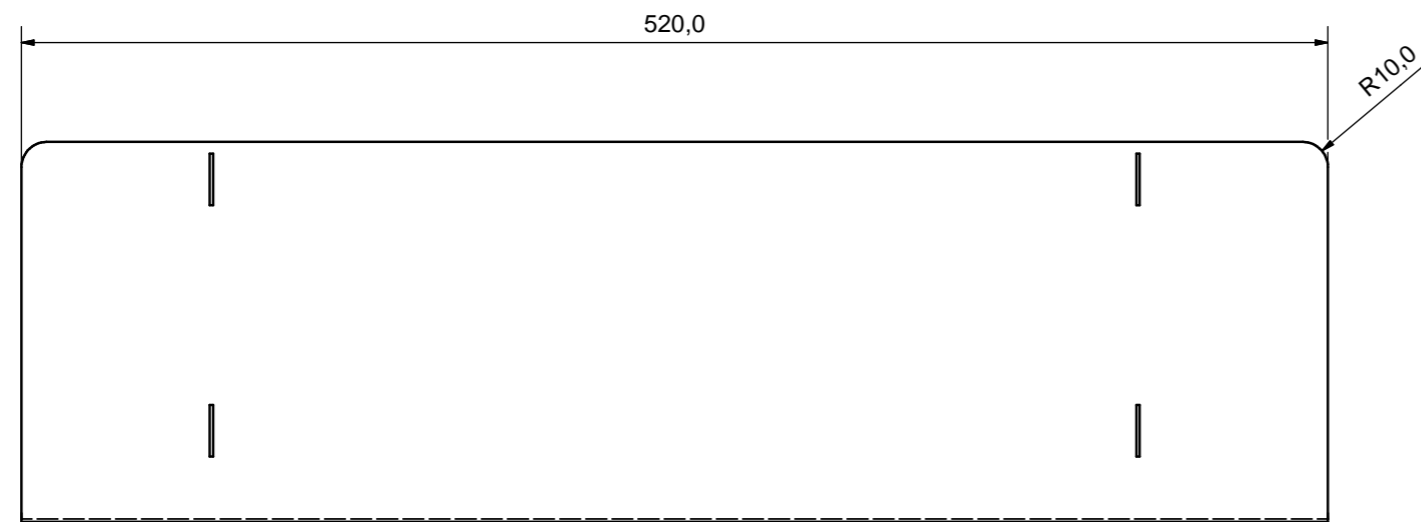
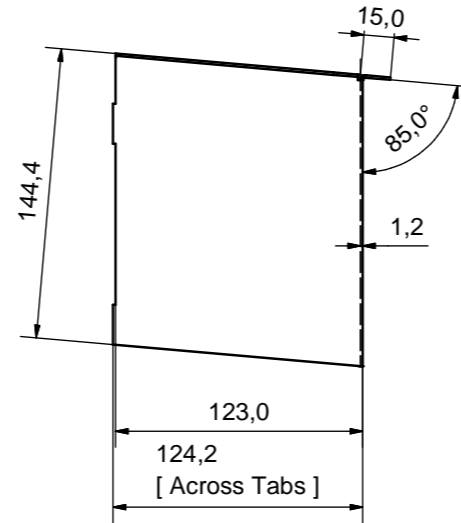
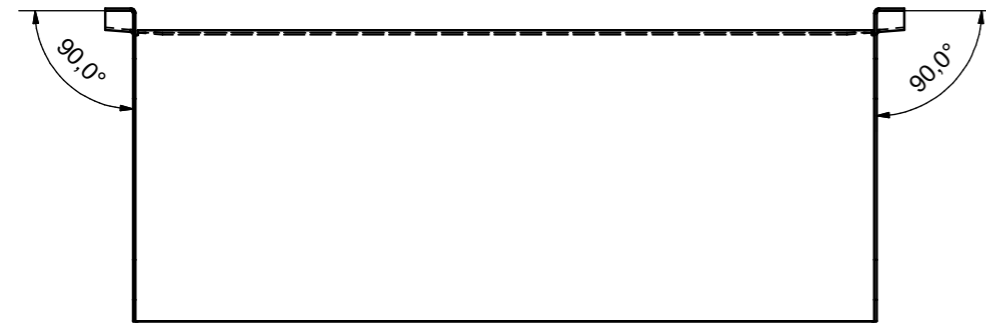
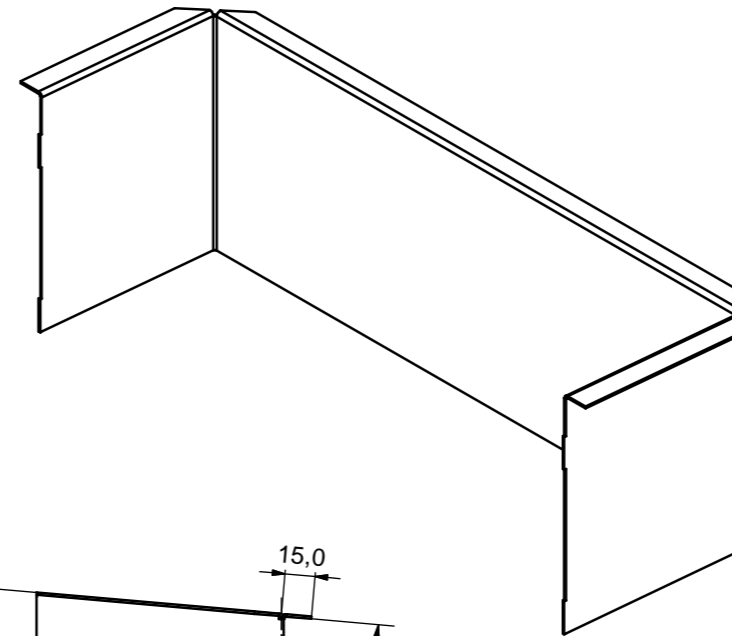
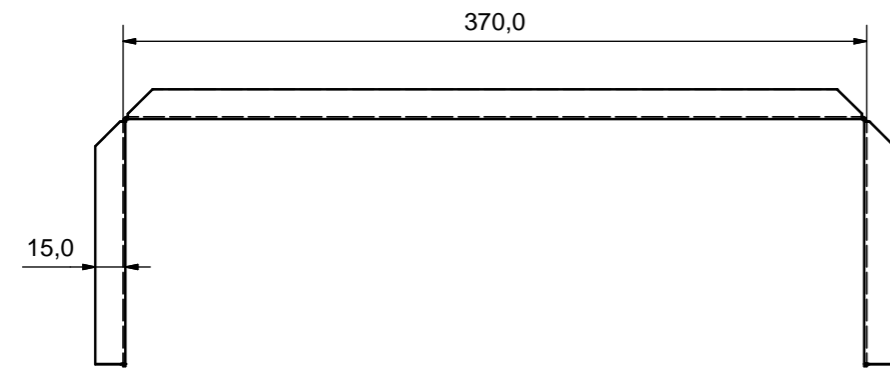
General waste bin - 120lts  
Chute Assembly

LAST UPDATED - SEPTEMBER 2022

Units in mm

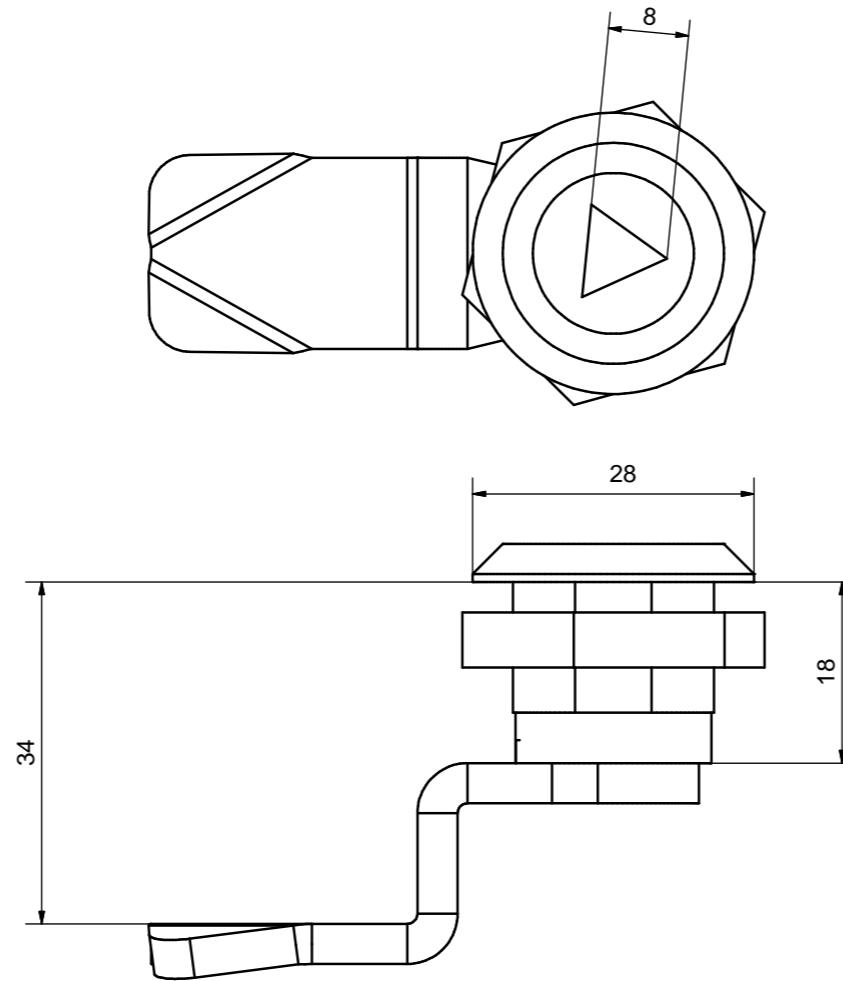
INFRASTRUCTURE PLANNING

SD1003-E SHEET  
8 of 10



Note:  
 Finish: Natural  
 Material: 304 2B SS

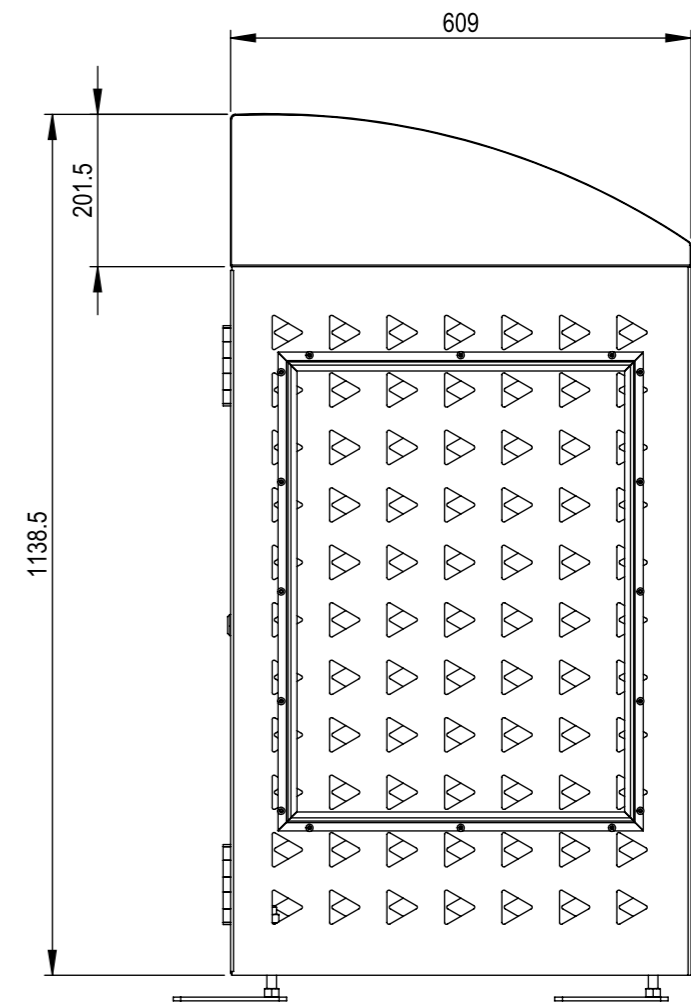
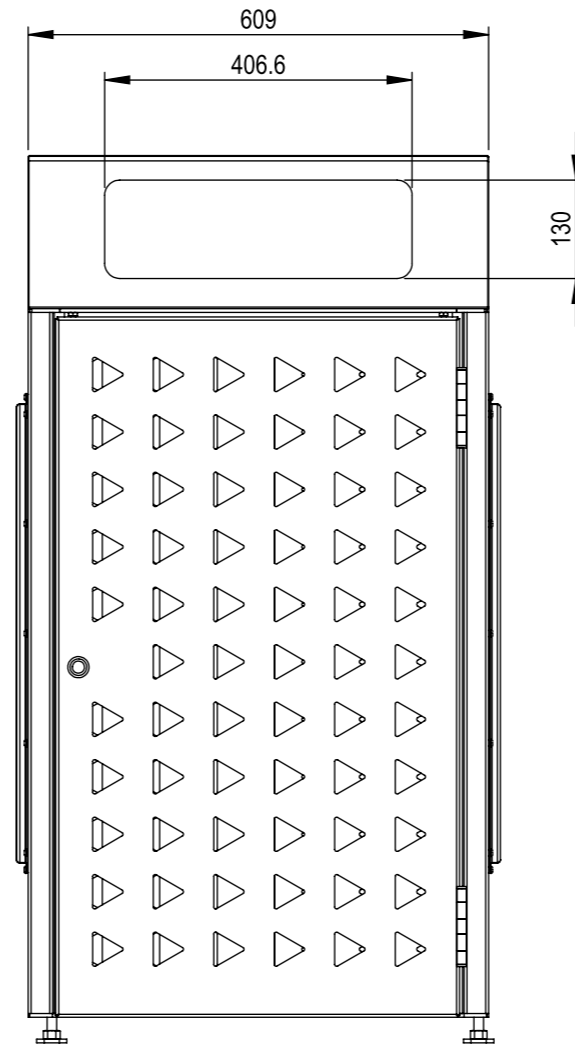
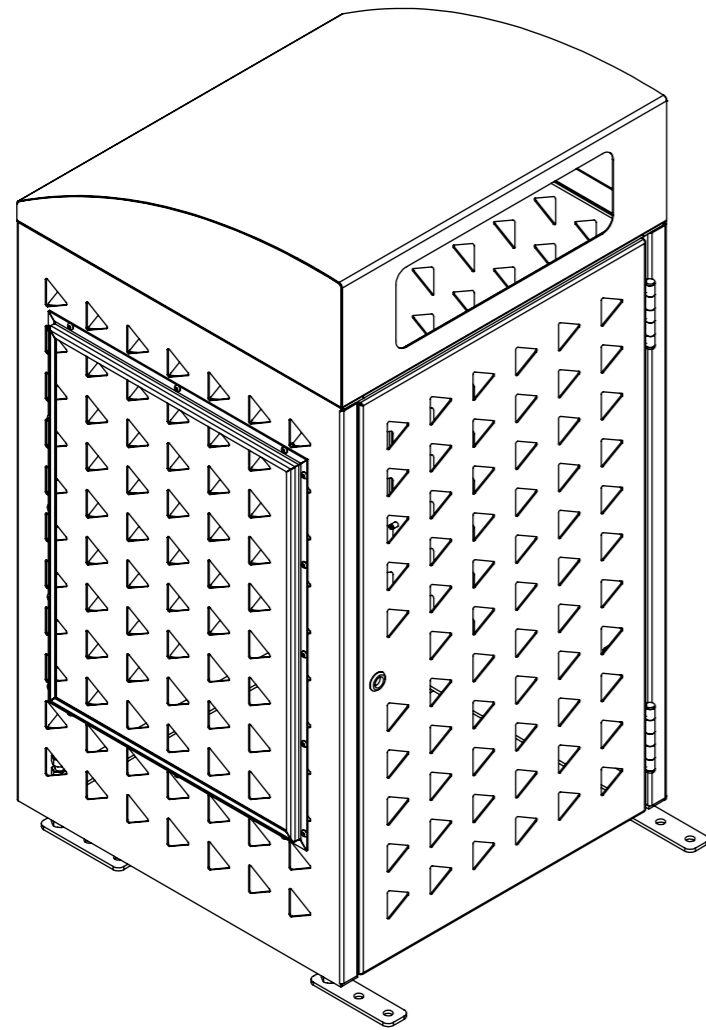
Remove all burrs and sharp edges  
 No scratches



Note:  
 Finish: Plated  
 Material: Mild Steel

Spring loaded catches to stop doors from being left open and becoming damaged.

	<b>GREATER DANDENONG</b>	LAST UPDATED - SEPTEMBER 2022
		Units in mm
	General waste bin - 120lts Lock Cam	INFRASTRUCTURE PLANNING
		<b>SD1003-E</b> SHEET 10 of 10



**GREATER DANDENONG**

General Waste Bin  
Front opening

LAST UPDATED - SEPTEMBER 2022  
Scale 1:10 @ A3  
Units in mm  
INFRASTRUCTURE PLANNING  
**SD1003-F** SHEET  
1 of 1

COMMERCIAL SYSTEMS (OR SIMILAR APPROVED), MODIFIED TM 4065 SEAT  
 1900 TOTAL LENGTH.  
 40x30x1800 LONG CLASS 1 TIMBER SLATS STAINED TO SELECTED COLOUR  
 AND WITH PENCIL EDGES.  
 END FRAME 50x10 MS BAR  
 MID BRACING 40x10 MS BAR  
 HORIZONTAL BRACING 32x10 MS BAR & 20x20 RHS

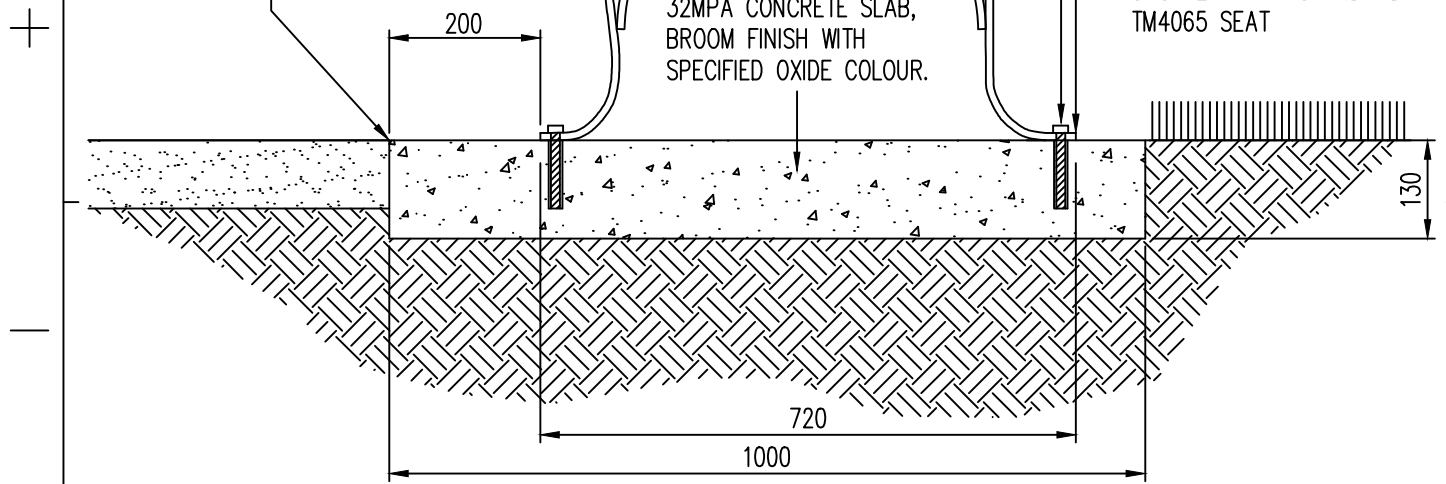
ALL STEELWORK  
 PAINTED DULUX  
 CHARCOAL 88351

DRILL & FIT M12 'DYNASET'  
 DROP-IN ANCHORS TO CONCRETE  
 PAD. FIX WITH M12 BOLT TO  
 MATCH ANCHOR

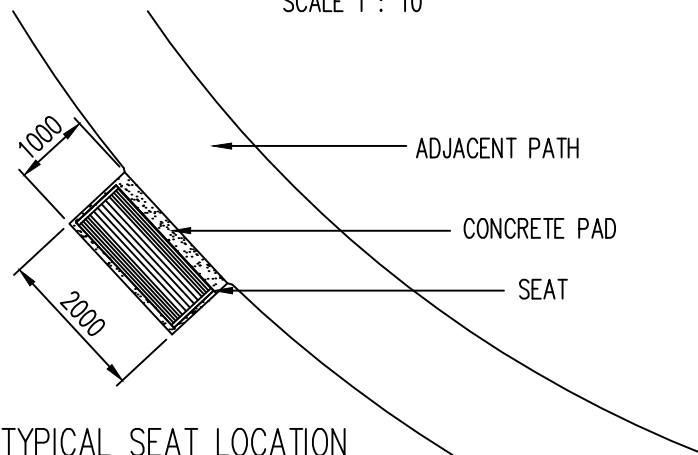
CONCRETE PAD FLUSH  
 WITH ADJOINING PATHS,  
 LAWN OR OTHER SURFACES

EACH FOOT CUT NOM. 40MM  
 SHORTER THAN STANDARD  
 TM4065 SEAT

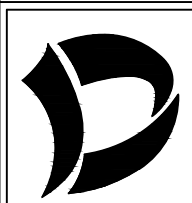
MIN. 2000x1000x130 THICK  
 32MPA CONCRETE SLAB,  
 BROOM FINISH WITH  
 SPECIFIED OXIDE COLOUR.



ELEVATION  
 SCALE 1 : 10



PLAN VIEW OF TYPICAL SEAT LOCATION  
 SCALE 1 : 100



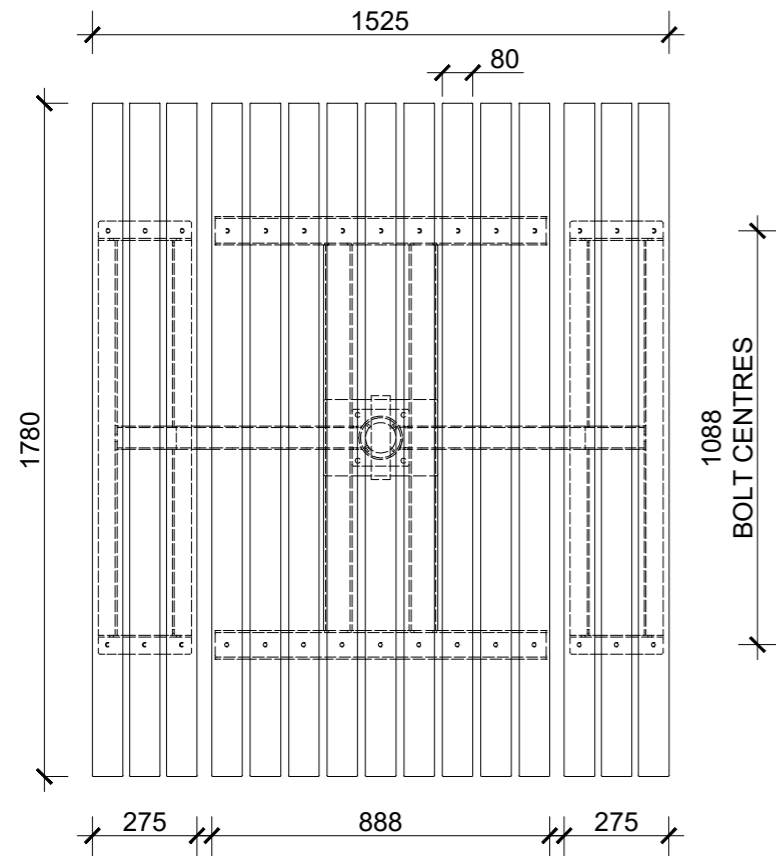
GREATER DANDENONG

STANDARD PARK SEAT TYPE A

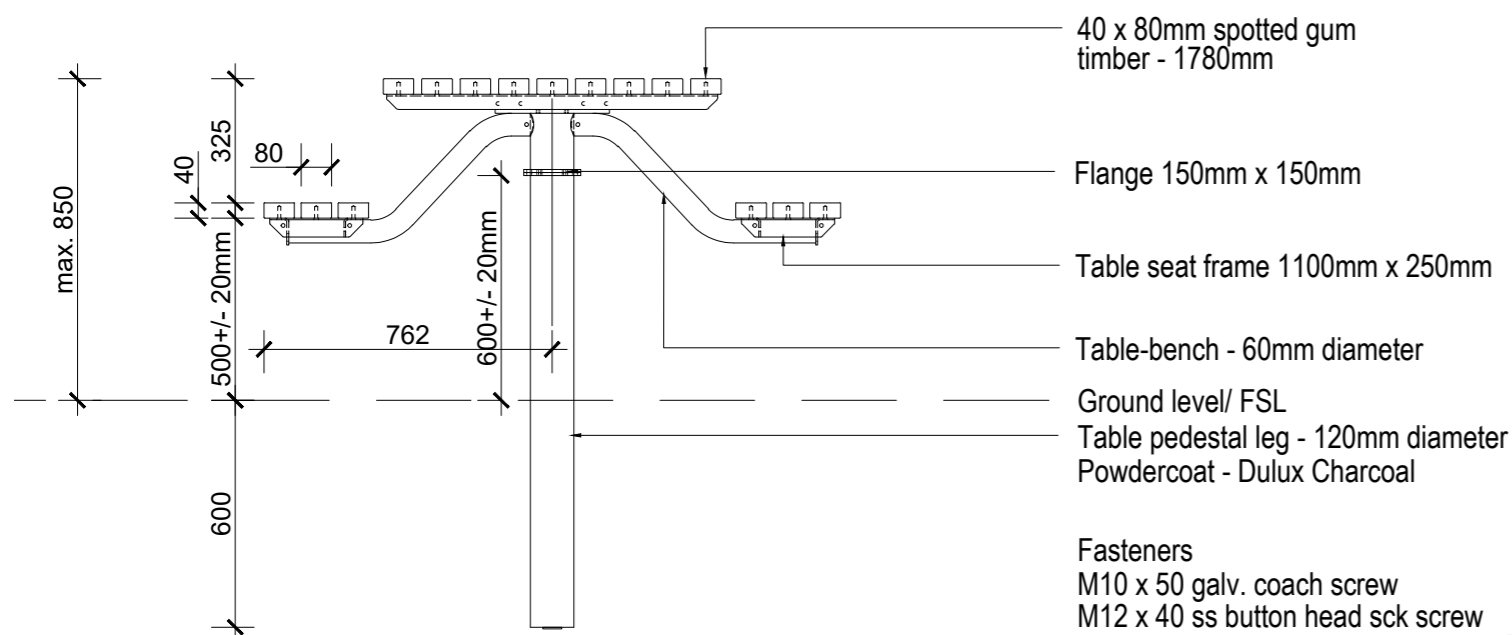
LAST UPDATED - SEPTEMBER 2014

INFRASTRUCTURE PLANNING

SD 1004-A



PLAN



SECTION

- 40 x 80mm spotted gum timber - 1780mm
- Flange 150mm x 150mm
- Table seat frame 1100mm x 250mm
- Table-bench - 60mm diameter
- Ground level/ FSL
- Table pedestal leg - 120mm diameter  
Powdercoat - Dulux Charcoal

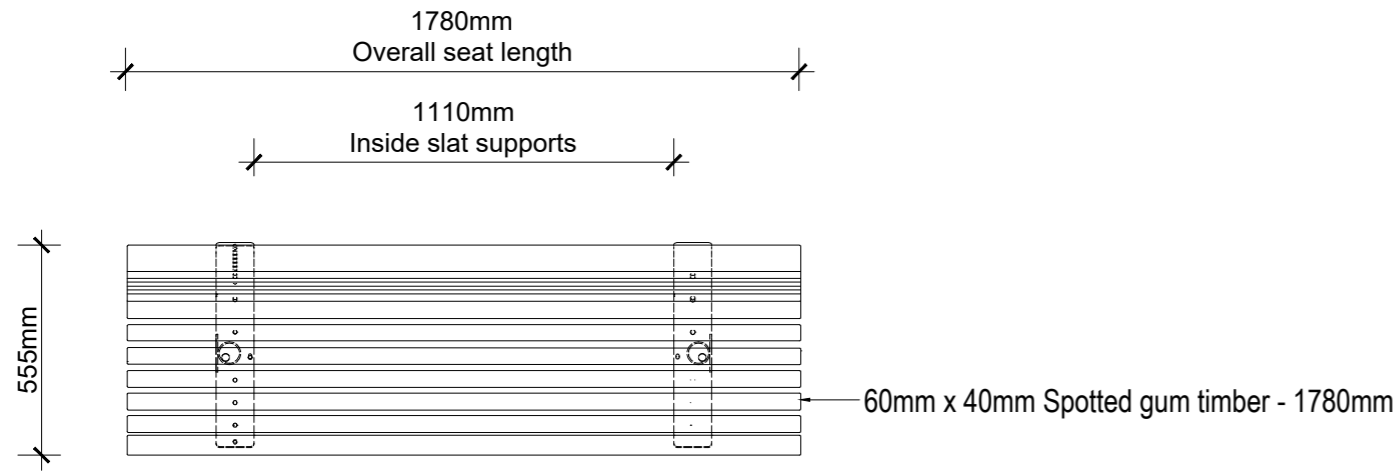
- Fasteners
- M10 x 50 galv. coach screw
  - M12 x 40 ss button head sck screw
  - M12 stainless steel flat washer
  - M12 stainless steel nyloc nut



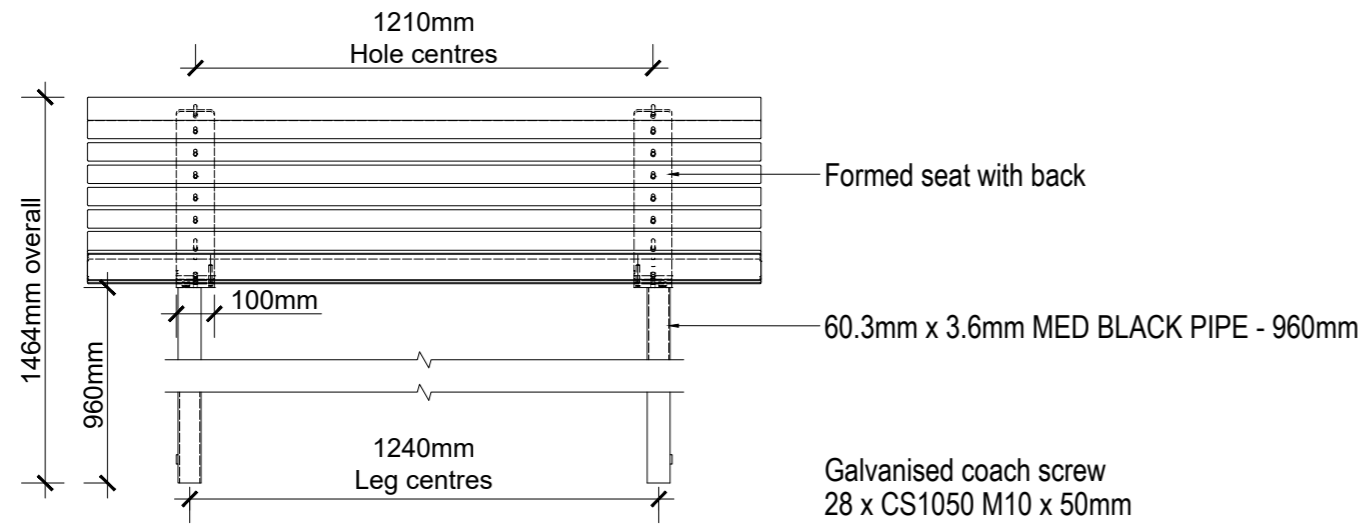
# GREATER DANDENONG

Timber Pedestal Picnic Table (Inground)  
Parks Table

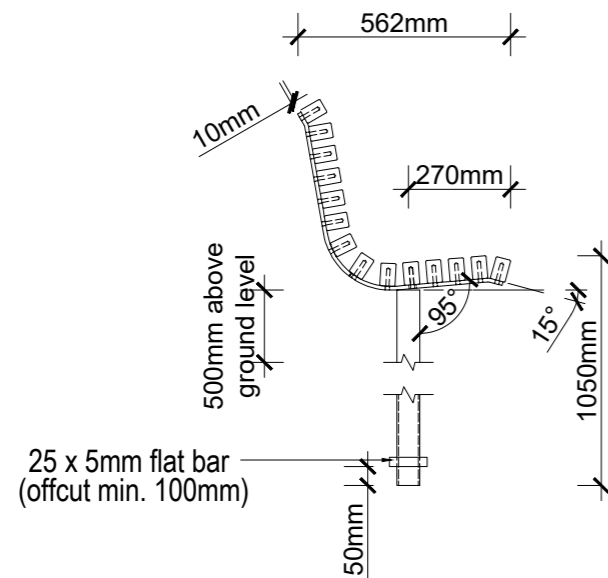
LAST UPDATED - SEPTEMBER 2022
Scale 1:10 @ A3 Units in mm
INFRASTRUCTURE PLANNING
<b>SD1005-A</b> SHEET 1 of 1



PLAN



SECTION



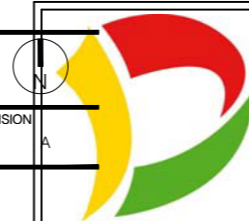
SECTION

DRAWING TITLE  
CGD STANDARD DETAILS

ISSUE  
FOR TENDER

SCALE  
AS SHOWN

DRAWING NO. LA-01	DATE June '22	REVISION A
----------------------	------------------	---------------



**GREATER DANDENONG**

Timber Park Seat (Inground)  
Parks Seat

LAST UPDATED - SEPTEMBER 2022  
Scale 1:10 @ A3  
Units in mm

INFRASTRUCTURE PLANNING

SD1006-A SHEET  
1 of 1